

BUILT UP HORIZONTAL CLADDING EUROCLAD SINUSOIDAL PROFILE COLOUR RAL 240 80 05 ALBATROSS

STEELPOWDER COATED FIRE EXIT DOOR ANTHRACITE GREY RAL 7016. POTENTIAL FOR ENTRANCE DOOR WITH FIXED SIDE LIGHTS TO BE INSTALLED IN FUTURE, DOTTED LINE SHOWS EXTENT OF POTENTIAL WORKS.

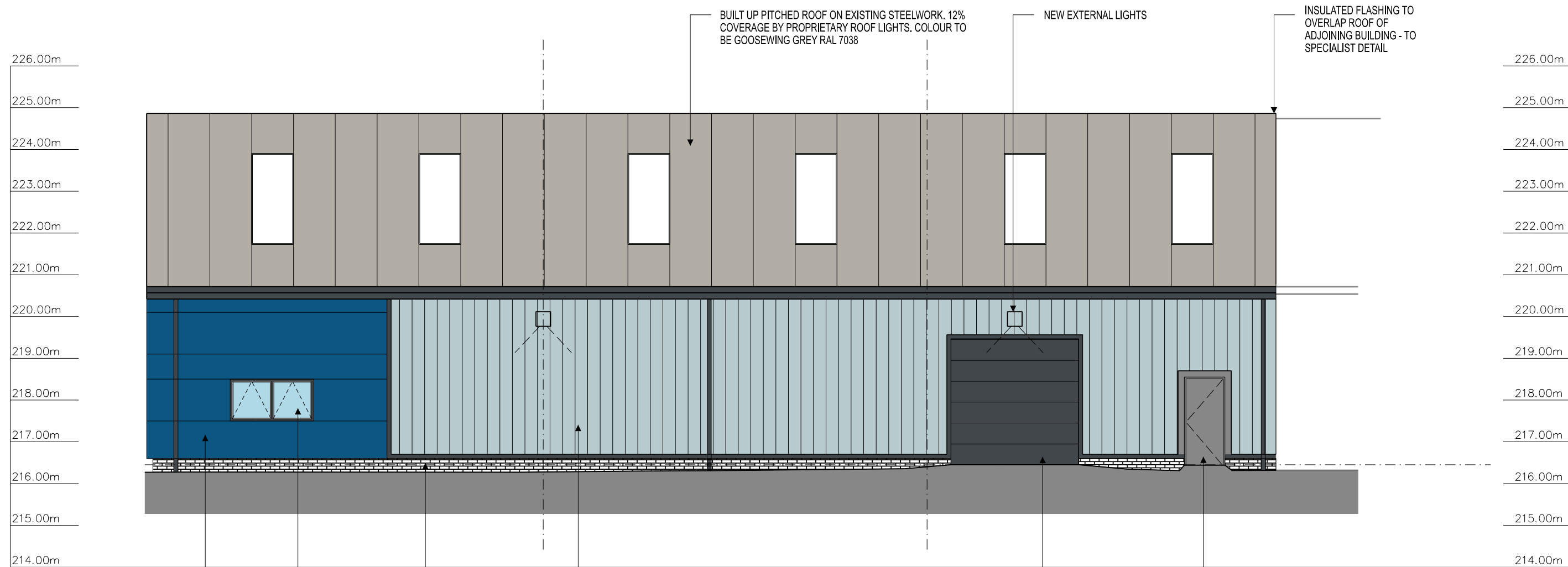
1no. LEVEL GOODS OVERHEAD SECTIONAL DOOR ANTHRACITE GREY RAL 7016

POTENTIAL FOR FUTURE INSTALLATION OF PERSONNEL TO EACH UNIT, SHOULD THE UNIT BE SPLIT INTO TWO. DOTTED LINE EXTENT OF POTENTIAL WORKS.

1no. LEVEL GOODS OVERHEAD SECTIONAL DOOR ANTHRACITE GREY RAL 7016

ALUMINIUM FRAMED CURTAIN WALLING WITH INTEGRAL PERSONNEL DOOR RAL 7016 ANTHRACITE GREY

RECLAIMED BRICKWORK USED TO INFILL AT LOW LEVEL WHERE VISIBLE



KINGSPAN KS1000 MM INSULATED CLADDING COLOUR TO BE GENTIAN BLUE RAL 5010.

POWDER COATED ALUMINIUM DOUBLE GLAZED WINDOW, RAL 7016 ANTHRACITE GREY.

RECLAIMED BRICKWORK USED TO INFILL AT LOW LEVEL WHERE VISIBLE

BUILT UP VERTICAL CLADDING EUROCLAD SINUSOIDAL PROFILE COLOUR RAL 240 80 05 ALBATROSS

1no. LEVEL GOODS OVERHEAD SECTIONAL DOOR ANTHRACITE GREY RAL 7016

STEELPOWDER COATED FIRE EXIT DOOR ANTHRACITE GREY RAL 7016.

Notes:

This drawing is the sole copyright of KPP Architects Ltd and reproduction in any form is forbidden unless permission is obtained in writing.

Do not scale from this drawing. Any discrepancies on site should be brought to the attention of KPP Architects Ltd.

Work and materials must comply with the current building regulations and codes of practice and be read in conjunction with building specifications and other sub-contractors information. All materials are to be installed in strict accordance with the recommendations of the manufacturers.

Rev	Description	By	Chkd	Date

Client

BULMER & LUMB

Project Title

**PROPOSED WORKS AT
BULMER & LUMB
BRADFORD**

Drawing Title

**PROPOSED ELEVATIONS
(EXISTING BUILDING)**

KPP
ARCHITECTS

Lodge House
12 Town Street
Horsforth, Leeds LS184RJ
T : +44 (0) 113 2390460
E : architects@kpp-leeds.co.uk
W : www.kpp-leeds.co.uk

Scale	Size	Date	Drawn	Checked
1:100	A2	FEB '21	JH	NJ
Status	PLANNING			
KPP Job No	2258			Rev
Number	2014			P1