

slough trading estate

100 YEARS OF THE INDUSTRIOUS

242/3
GRESHAM
ROAD
SL1 4RD

TO LET 14,604 SQ FT (1,357 SQ M)
DETACHED WAREHOUSE/PRODUCTION UNIT AVAILABLE TO LET COMBINED OR SEPARATELY

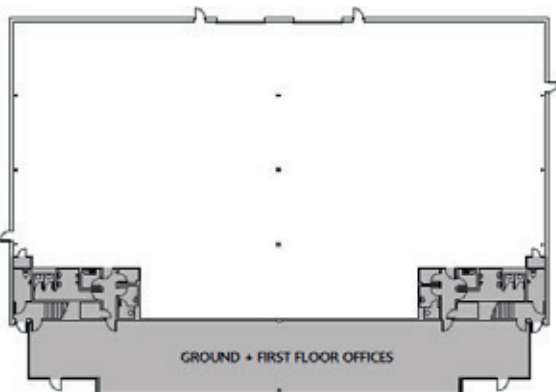
FEATURES

The unit, which is to be refurbished, benefits from:

- 6m to underside of haunch
- 2 electric up and over loading doors
- Ground and first floor offices
- Shared secure rear yard
- Kitchenette
- 3 phase electricity
- Gas supply
- EPC – C-59



Indicative photo



GROUND + FIRST FLOOR OFFICES

243 - FLOOR AREAS	SQ FT	SQ M
WAREHOUSE	4,312	400.6
GROUND FLOOR OFFICE	1,650	153.3
FIRST FLOOR OFFICE	1,310	121.7
TOTAL	7,272	675.6

242 - FLOOR AREAS	SQ FT	SQ M
WAREHOUSE	4,354	404.5
GROUND FLOOR OFFICE	1,600	148.6
FIRST FLOOR OFFICE	1,379	128.1
TOTAL	7,332	681.2

ALL AREAS MEASURED ON AN APPROXIMATE GROSS EXTERNAL AREA

11 PLACES TO EAT
3 HIGH STREET BANKS
HOTEL ACCOMMODATION
MULTIPLE FITNESS FACILITIES
2 NURSERIES
HEALTH CENTRE
DEDICATED BUS SERVICE



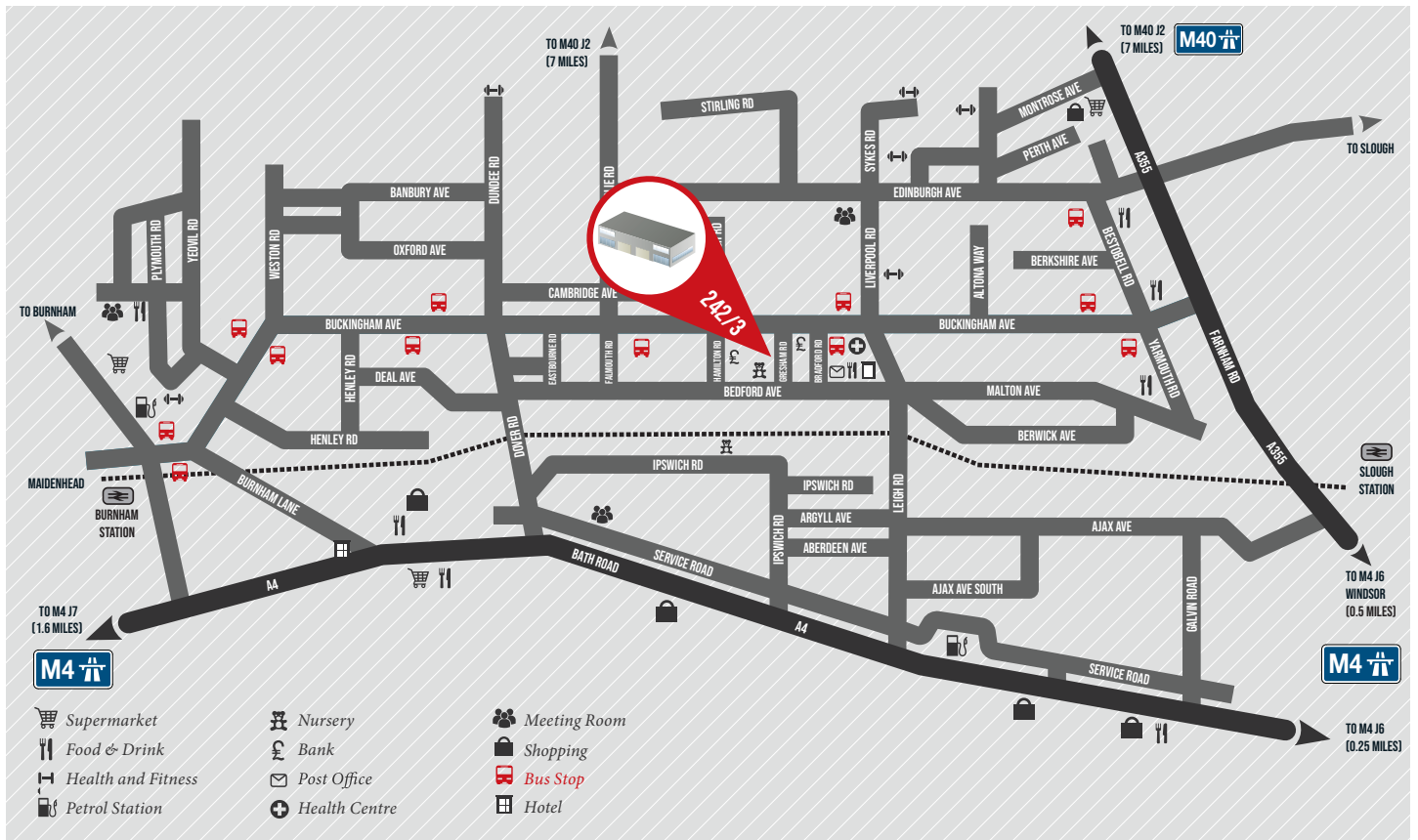
VIRTUAL TOUR

SEGRO

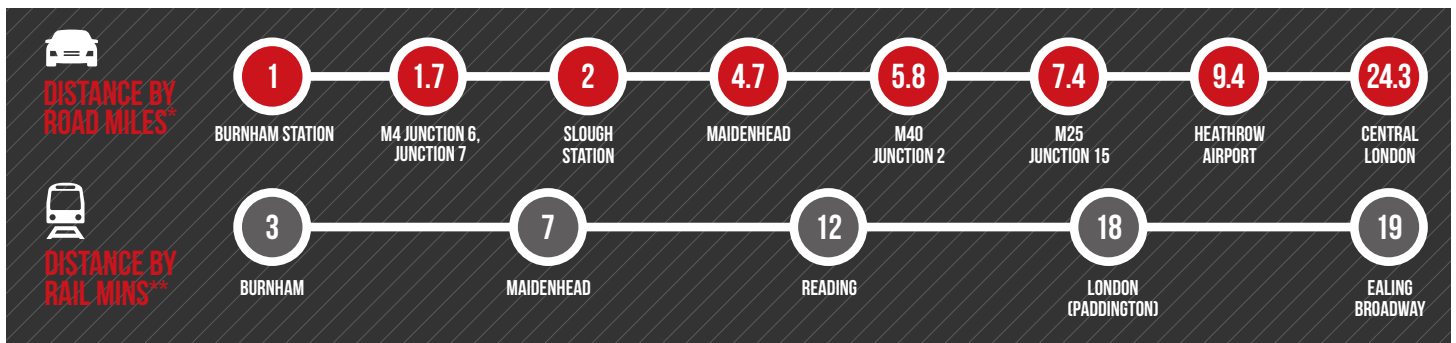
100 YEARS OF THE EXTRAORDINARY

SLOUGH TRADING ESTATE MAKING IT IN BRITAIN

—A celebration of the industrious



DISTANCES



SOURCE: * FROM 242/3 GRESHAM ROAD SL1 4RD. SOURCE: THE AA ** TIMES FROM SLOUGH STATION. SOURCE: NATIONAL RAIL ENQUIRIES

SERVICES

- Established and well-managed estate
- A large employment base providing access to the very best talent the region has to offer
- 24-hour award-winning CCTV and security team
- 24-hour on-site customer care
- 350+ estate occupiers

VIEWINGS

FOR FURTHER INFORMATION,
CONTACT OUR AGENTS OR
SEGRO DIRECT ON
01753 537171

JLL
020 8759 4141
020 7493 4933
jll.co.uk/property

CUSHMAN & WAKEFIELD
020 7935 5000
020 8569 1600
cushmanwakefield.co.uk



100 YEARS OF THE EXTRAORDINARY

The content of this document is believed to be correct at the date of publication, however the Company accepts no responsibility or liability for (or makes any representation, statement or expression of opinion or warranty, express or implied, with respect to), the accuracy or completeness of the content of this document. July 2020 182902

STE.SEGRO.COM
@SLOUGHTE