

GOLDSWORTH PLACE



WOKING

GOLDSWORTH PLACE IS A SIGNATURE BUILDING BEAUTIFULLY COMBINING DESIGN AND INNOVATION TO CREATE WORKING ENVIRONMENTS THAT INSPIRE AND EXCITE. LARGE OPEN FLOOR PLATES AND FLOOR TO CEILING GLAZING DRAWS NATURAL LIGHT TO THE HEART OF THE BUILDING PROVIDING UPLIFTING AND STIMULATING WORK SPACES.

Enriching the workspace has proven to be a catalyst in creating productive offices and Goldsworth Place offers this in abundance. Two excellent light and spacious floors totalling 38,464 square feet are available now. Extensive refurbishment of the available floors, with an extended reception including new café and break-out areas, all deliver an impressive arrival experience.







RECEPTION HALL ENTRANCE



RECEPTION HALL



RECEPTION HALL BREAK-OUT SEATING AREAS





RECEPTION HALL CAFE AREA

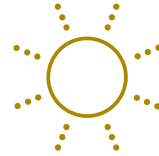
THE PLACE TO BE



**NEW RECEPTION, CAFÉ
& BREAK-OUT SPACE**



**UNRIVALLED TOWN CENTRE
PARKING RATIO - 1:247 SQ FT**



**ALLOCATED TERRACE SPACE
ON EACH FLOOR**



**TARGET EPC B
RATING**



**CANALSIDE WALKS &
CYCLE ROUTES**



**WOKING TO LONDON,
WATERLOO 23 MINUTES**



**70 SECURE CYCLE
STORAGE SPACES**



**BASEMENT SHOWERS
& CHANGING**



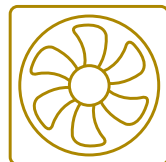
**GET READY ROOM
AND LOCKERS**



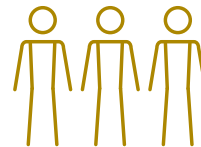
**FULLY REFURBISHED
WCs**



**3 DDA COMPLIANT
LIFTS**



**HIGHLY EFFICIENT
AIR CONDITIONING**



**OCCUPANCY DENSITIES
1:8 SQ METRES**



**FLOOR TO CEILING
GLAZING**



**WIREScore
GOLD**

ESG AT YOUR PLACE



**INTERNAL & EXTERNAL
BREAK-OUT SPACE**



**BUILDING AWARDS
EPC - TARGET B
WIREScore GOLD**



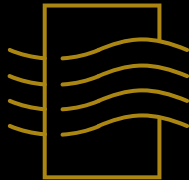
**IT & DIGITALISATION
HQO BUILDING APP**



**FRESH AIR
1ST & 2ND FLOOR TERRACES,
CANALSIDE BREAK-OUT AREA,
WALKS & CYCLE ROUTES**



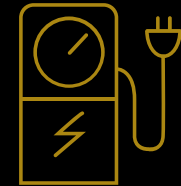
**70 CYCLE SPACES
8 BASEMENT SHOWERS
& CHANGING FACILITIES
WITH 30 LOCKERS**



**AIR QUALITY
HIGHLY EFFICIENT AIR
CONDITIONING**



**SUNLIGHT FLOOR
TO CEILING GLAZING**



**ELECTRIC VEHICLE
CHARGING POINTS
10 AVAILABLE TO ALL
OCCUPIERS**

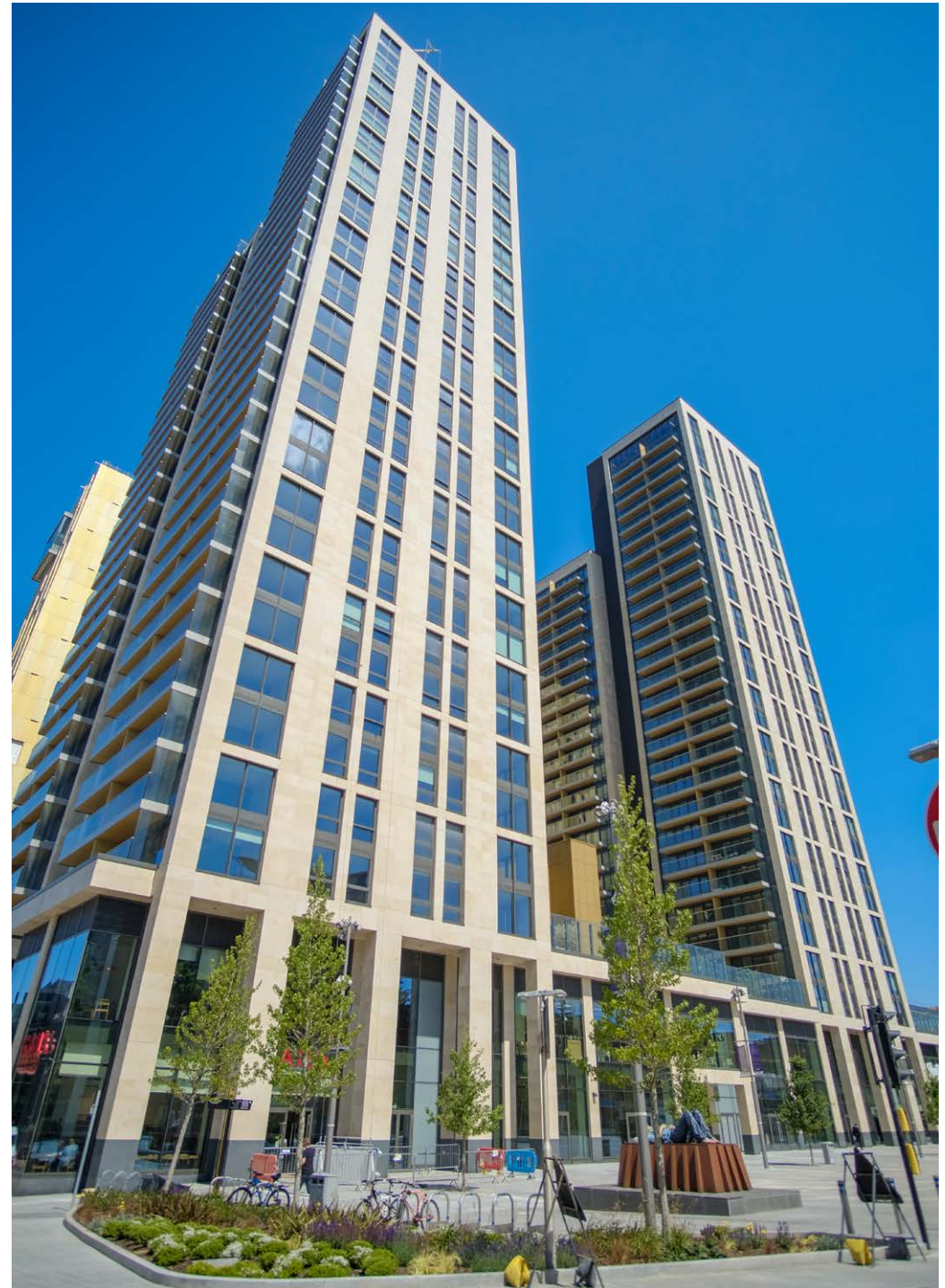
RIGHT TIME — RIGHT PLACE

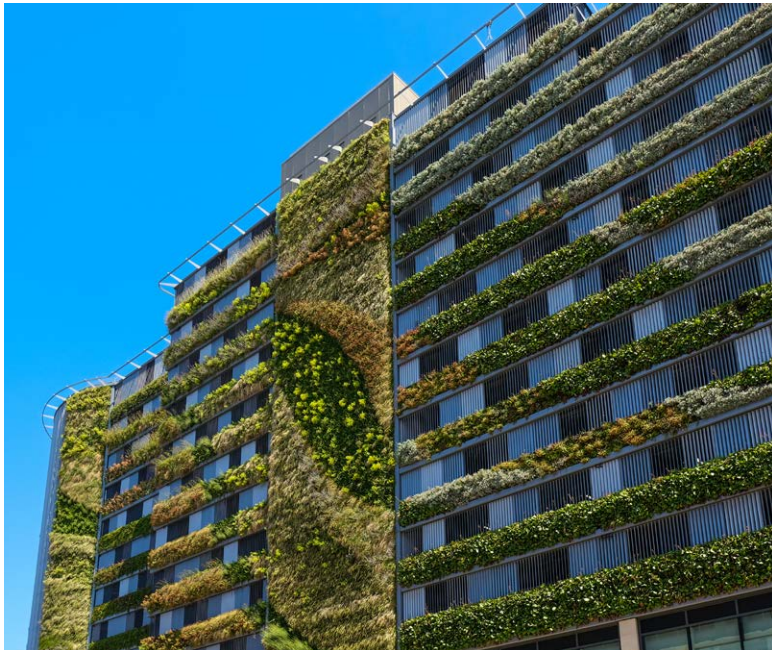
The transformation of Woking is rapidly taking shape following the completion of the new Victoria Place development, a 21st century high quality destination delivered for the South East. This is Woking's defining moment and the investment and ambition for the town is evident at every turn. Victoria Place adds 75,000 square feet of new shopping and eating experiences in two large and impressive public plazas.

The development also includes a 189 room Hilton hotel, featuring a restaurant, café, and 700 square metres of function rooms and meeting space.

There are also several bars including a Sky Bar on the 22nd floor, commanding views across Surrey and towards London.

Attracting the very best people and providing working environments they can excel in is at the core of Goldsworth Place thinking. Award winning architects TP Bennett have optimised the reception and outside areas to create high quality break space that includes a café and break-out areas. The fresh new changing facilities mean employees can make use of immediate access to the Saturn Trail.





PLACE IN THE SUN

IMPRESSIVE TERRACES — LIGHT, BRIGHT AND AIRY FLOORS

Both first and second floors feature excellent terrace and outside space. Sharing a coffee, catching some fresh air or simply breathing in the view can re-charge the day. The south facing aspects catch hours of unbroken daylight and the large glazed façades soak up summer sun – perfect for informal meetings as well as those all-important staff and client events.



WOKING CENTRAL



GOLDSWORTH PLACE

RETAIL

- 1 The Peacocks Retail Centre
- 2 Wolsley Place Retail Centre
- 3 Jubilee Square
- 4 Market Walk
- 5 Red Car Park
- 6 Victoria Place

VENUES

- 1 The Lightbox
- 2 WWF Living Planet
- 3 Nova Cinema
- 4 New Victoria Theatre
- 5 Anytime Fitness

CAFES

- 1 Costa Coffee
- 2 Starbucks
- 3 Pret A Manger
- 4 Côte Brasserie
- 5 Caffè Nero
- 6 Gordon Ramsey Street Burger

BUSINESSES

- 1 KFC
- 2 Fidessa
- 3 Asahi
- 4 McLaren
- 5 Mercer

HOTELS

- 1 Doubletree By Hilton
- 2 Travelodge
- 3 Premier Inn
- 4 Hilton

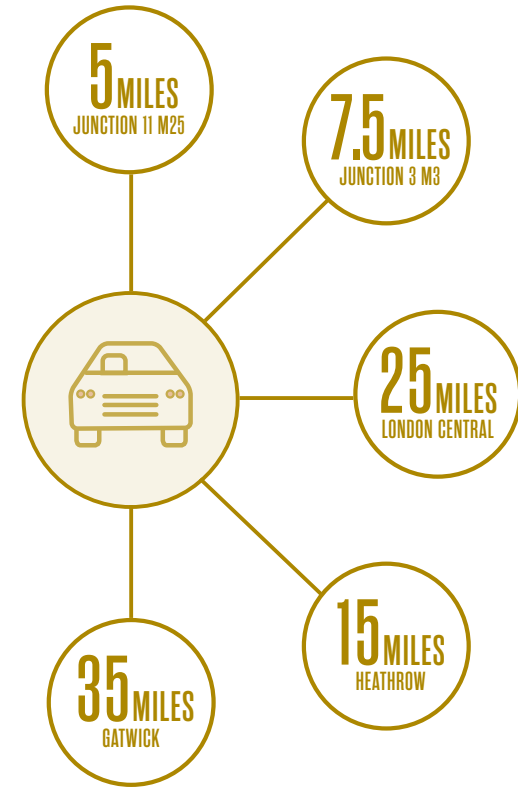
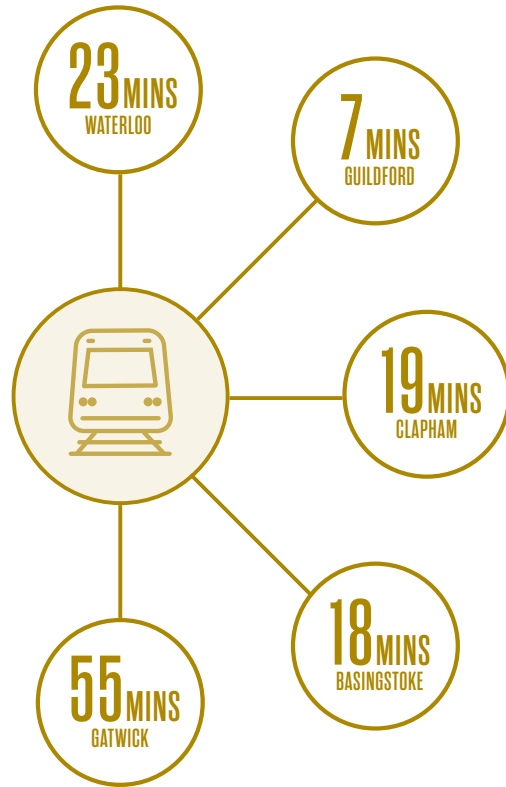
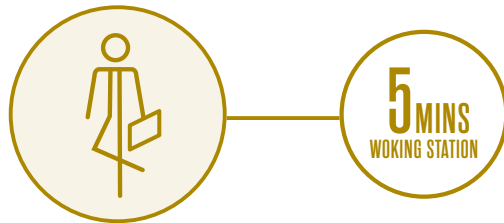
TRAVEL

- 1 Basingstoke Canal/Saturn Trail
- 2 Woking Rail Station

CONNECTED PLACE

UNRIVALLED ROAD ACCESS & SWIFT RAIL SERVICES TO LONDON

Goldsworth Place is superbly located to enable quick travel around the South East and beyond. Woking rail station is only a short walk via the ground-breaking new Victoria Square and London Waterloo Station (23 minutes journey time) is serviced by 15 trains an hour. The motorway network is easily accessed with both Gatwick and Heathrow airports under an hour's drive time.

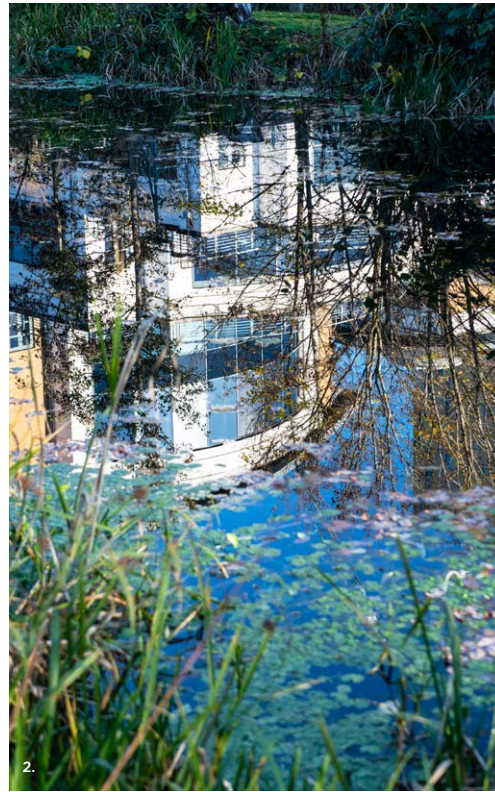




JUBILEE SQUARE



1.



2.



3.

THE PLACE TO ABSORB

1. ALEC BEDSER
2. GOLDSWORTH PLACE
3. THE LIGHTBOX
4. WWF LIVING PLANET
5. HG WELLS



4.



5.

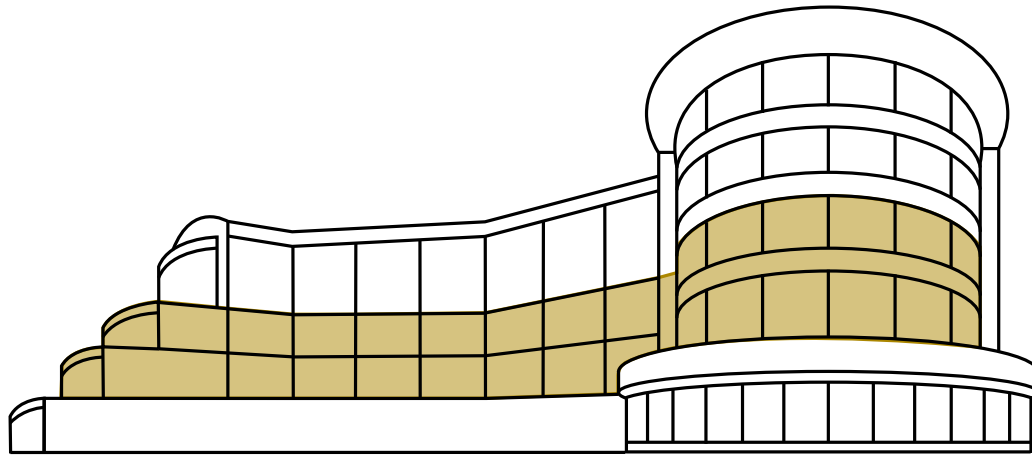


SATURN TRAIL / BASINGSTOKE CANAL



PLAN YOUR PLACE

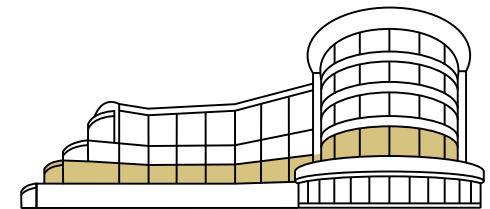
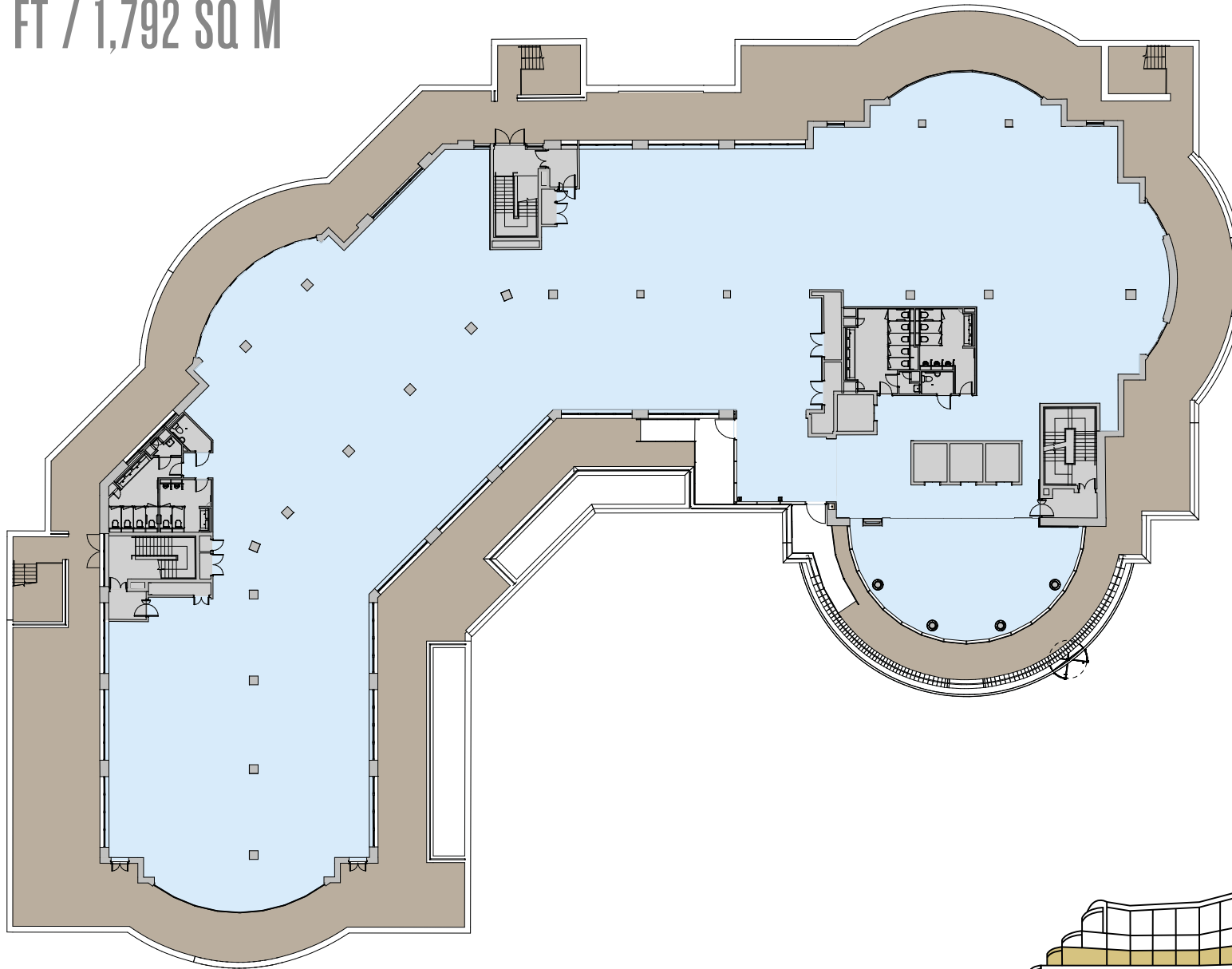
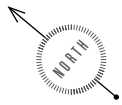
SECOND FLOOR	19,170 SQ FT / 1,781 SQ M
FIRST FLOOR	19,294 SQ FT / 1,792 SQ M
TOTAL	<u>38,464 SQ FT / 3,573 SQ M</u>



4	LET TO CAPGEMINI UK PLC
3	LET TO CAPGEMINI UK PLC
2	19,170 SQ FT / 1,781 SQ M (PARKING - 77 SPACES)
1	19,294 SQ FT / 1,792 SQ M (PARKING - 78 SPACES)
G	RECEPTION / CAFE

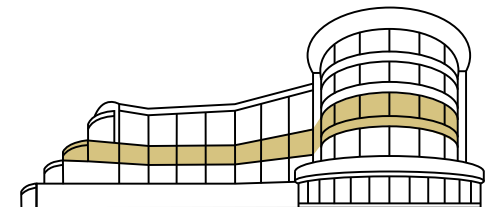
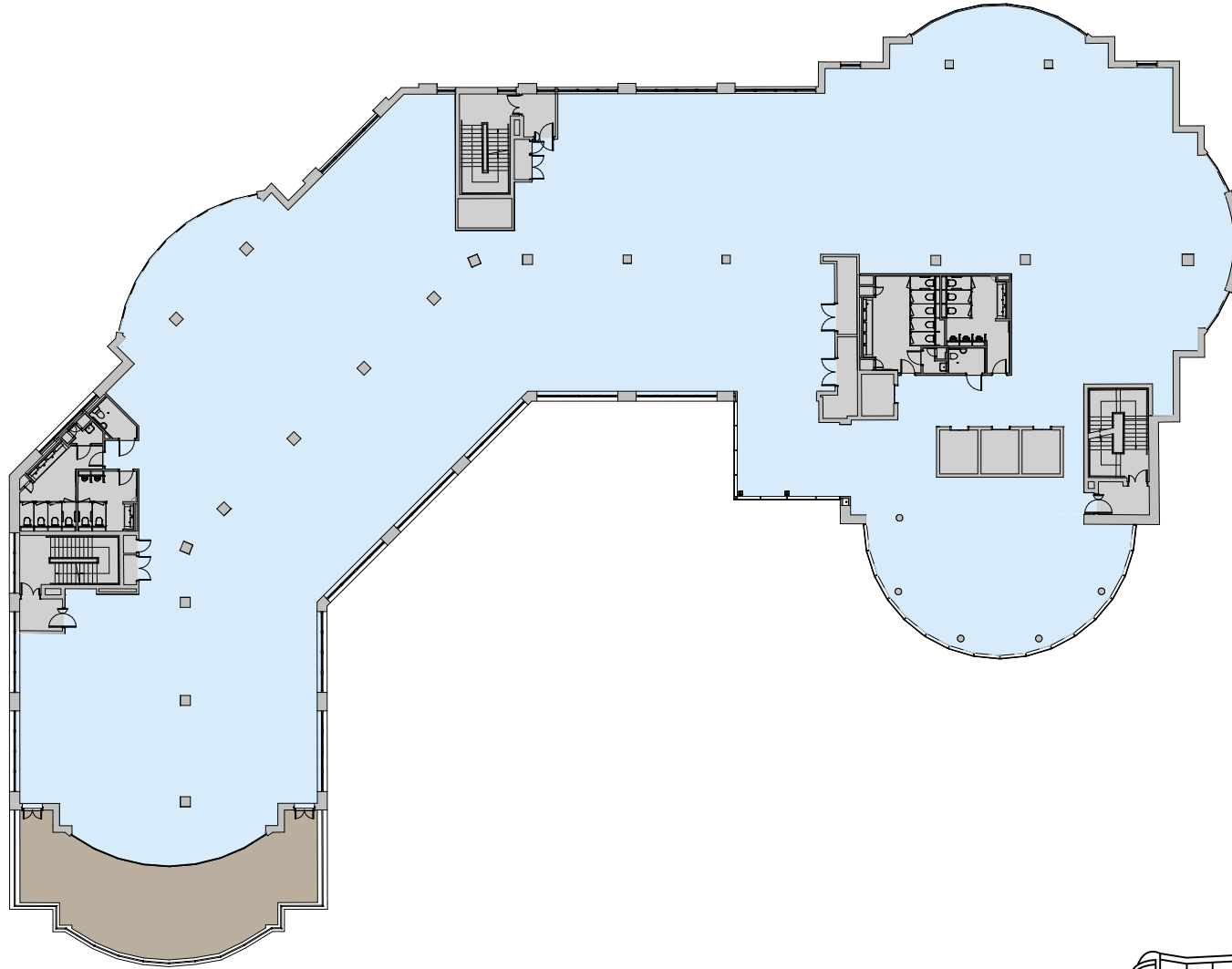
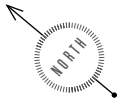
FIRST FLOOR

19,294 SQ FT / 1,792 SQ M



SECOND FLOOR

19,170 SQ FT / 1,781 SQ M





FIRST FLOOR OFFICE



FIRST FLOOR ROOF TERRACES



FIRST FLOOR OFFICE



FIRST FLOOR OFFICE



FIRST FLOOR TERRACE



FIRST FLOOR WCs



SECOND FLOOR OFFICE



SECOND FLOOR OFFICE





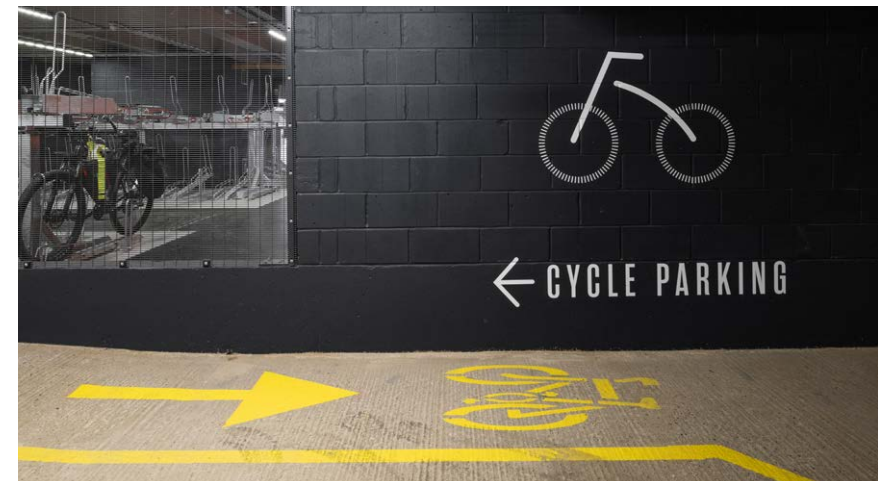
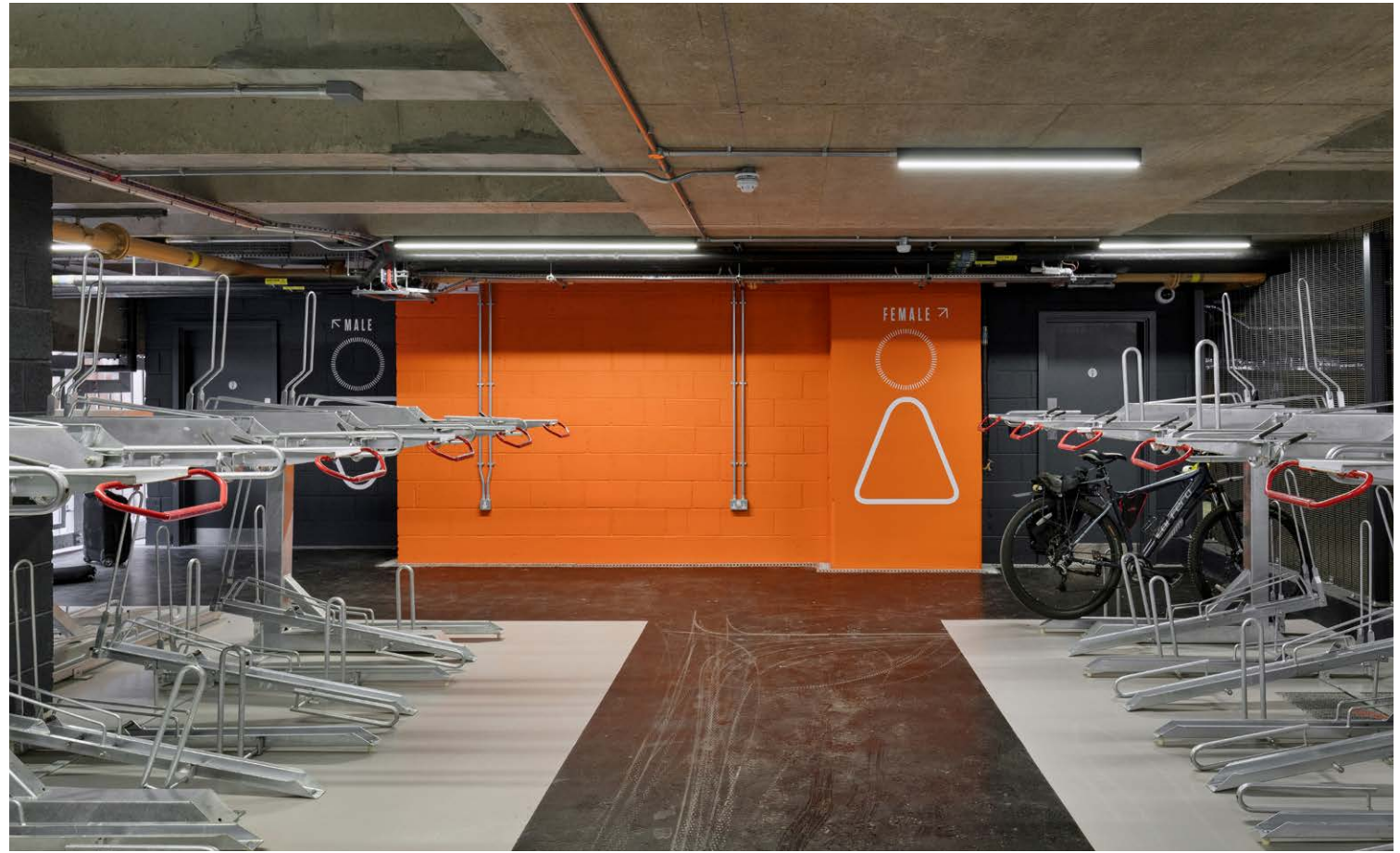
SECOND FLOOR OFFICE



CGI OF POTENTIAL FIT OUT

MOBILE PLACE

Goldsworth Place is surrounded by excellent opportunities to escape the urban and immerse yourself in the rural. The Saturn Walk canalside trail and cycleway runs alongside the building and offers miles of secluded interconnected paths. Easily accessible storage for 70 bikes have been included in the basement parking area with dedicated showers and M/F changing featuring oak lockers and benching.



OWNER & DEVELOPER



GOLDSWORTHPLACE.COM

AGENTS



STUART CHAMBERS
stuart.chambers@savills.com
+44 7870 999 339

ANDREW WILLCOCK
awillcock@savills.com
+44 7870 999 628



SIMON FITCH
simon.fitch@hurstwarne.co.uk
+44 7917 531 707

PETER RICHARDS
peter.richards@hurstwarne.co.uk
+44 7803 078 011

IMPORTANT NOTICE

1. Particulars:

These particulars are not an offer or contract, nor part of one. You should not rely on statements by Savills LLP or Hurst Warne in the particulars or by word of mouth or in writing (“information”) as being factually accurate about the property, its condition or its value. Neither Savills LLP or Hurst Warne nor any joint agent has any authority to make any representations about the property, and accordingly any information given is entirely without responsibility on the part of the agents, seller(s) or lessors(s).

2. Photos and CGI's etc:

The photographs and CGI's show only certain parts of the property as they appeared at the time they were taken. Areas, measurements and distances given are approximate only.

3. Regulations etc:

Any reference to alterations to, or use of, any part of the property does not mean that any necessary planning, building regulations or other consent has been obtained. None of the services or appliances have been tested and no warranty is given or is to be implied that they are in working order. A buyer or lessee must find out by inspection or in other ways that these matters have been properly dealt with and that all information is correct. July 2022.

