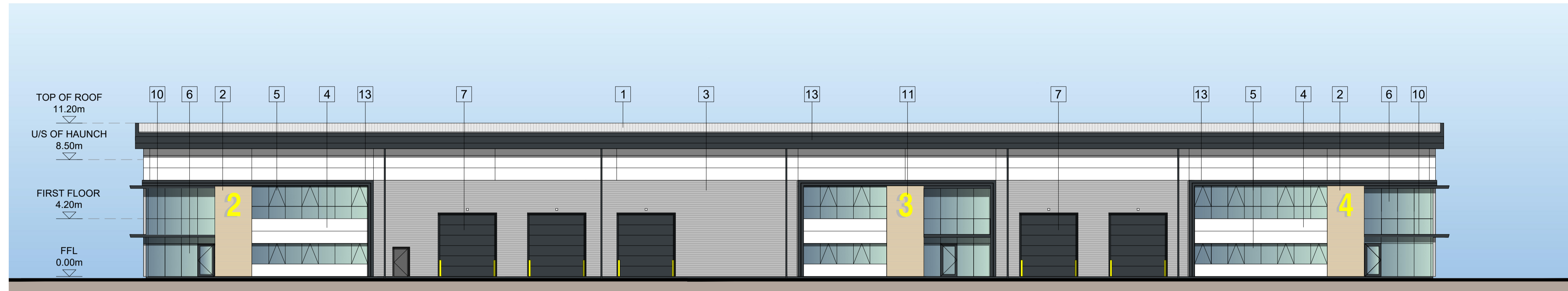
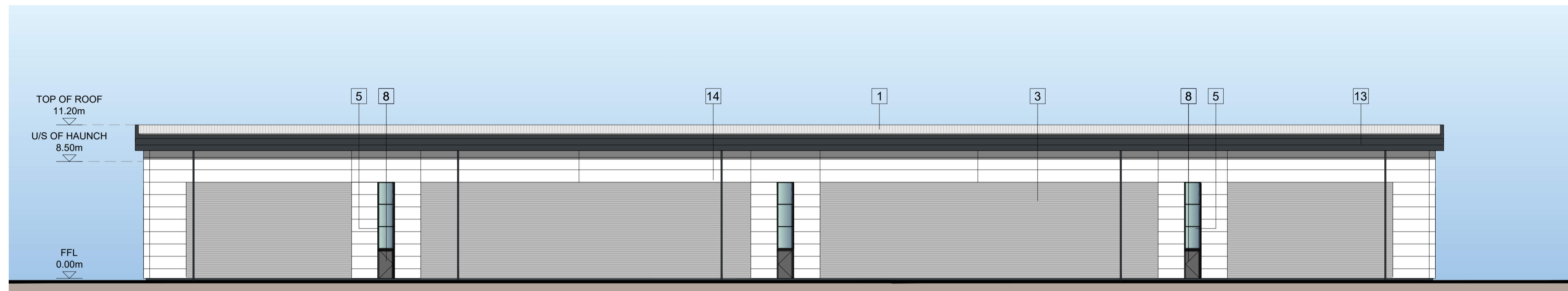


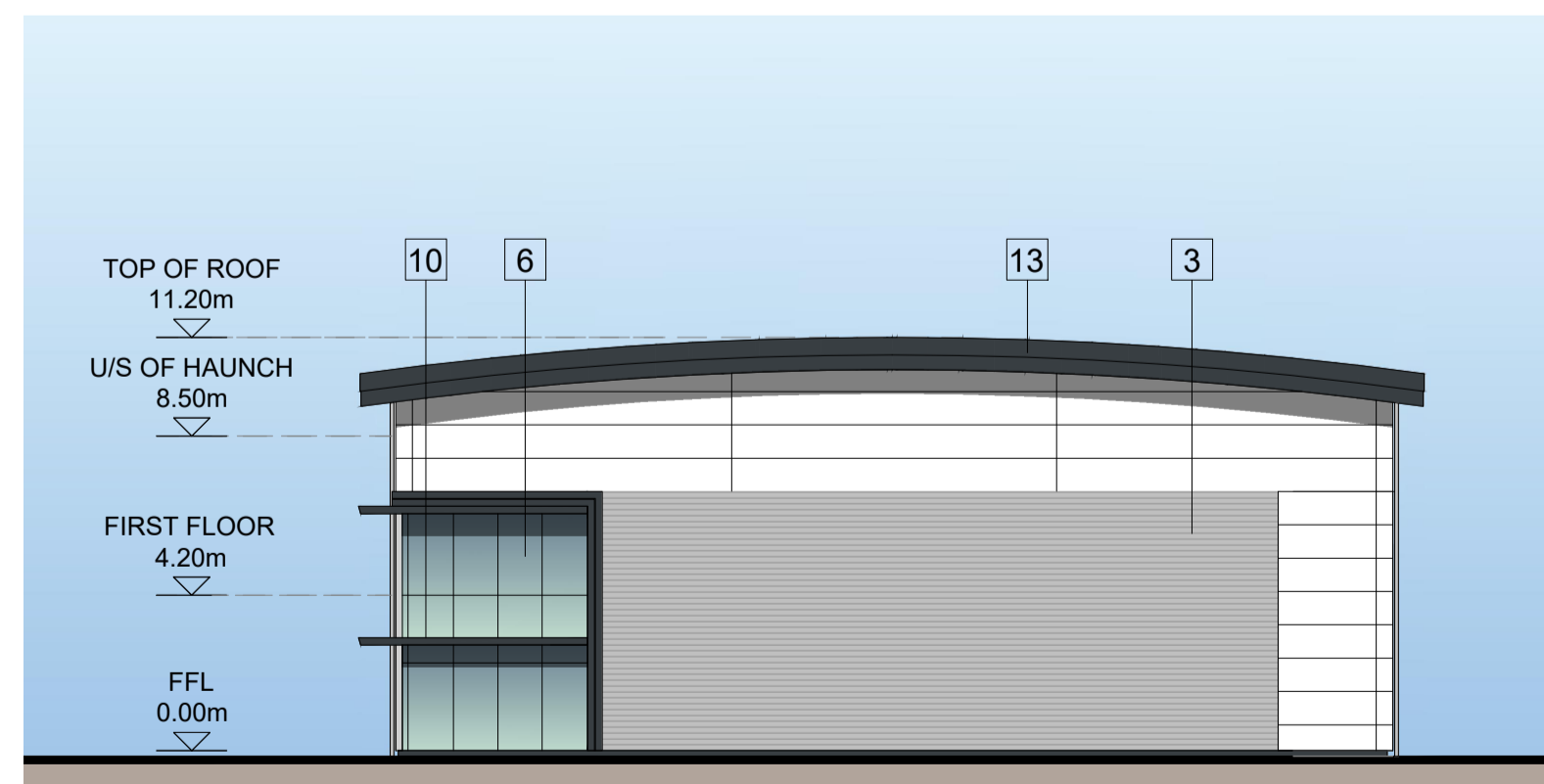
Revisions:	Drawn/Chkd:	Date:
A. Elevations generally revised and updated.	AMc	June 21
B. Elevations generally revised and updated following planners comments.	RM	Sep 21



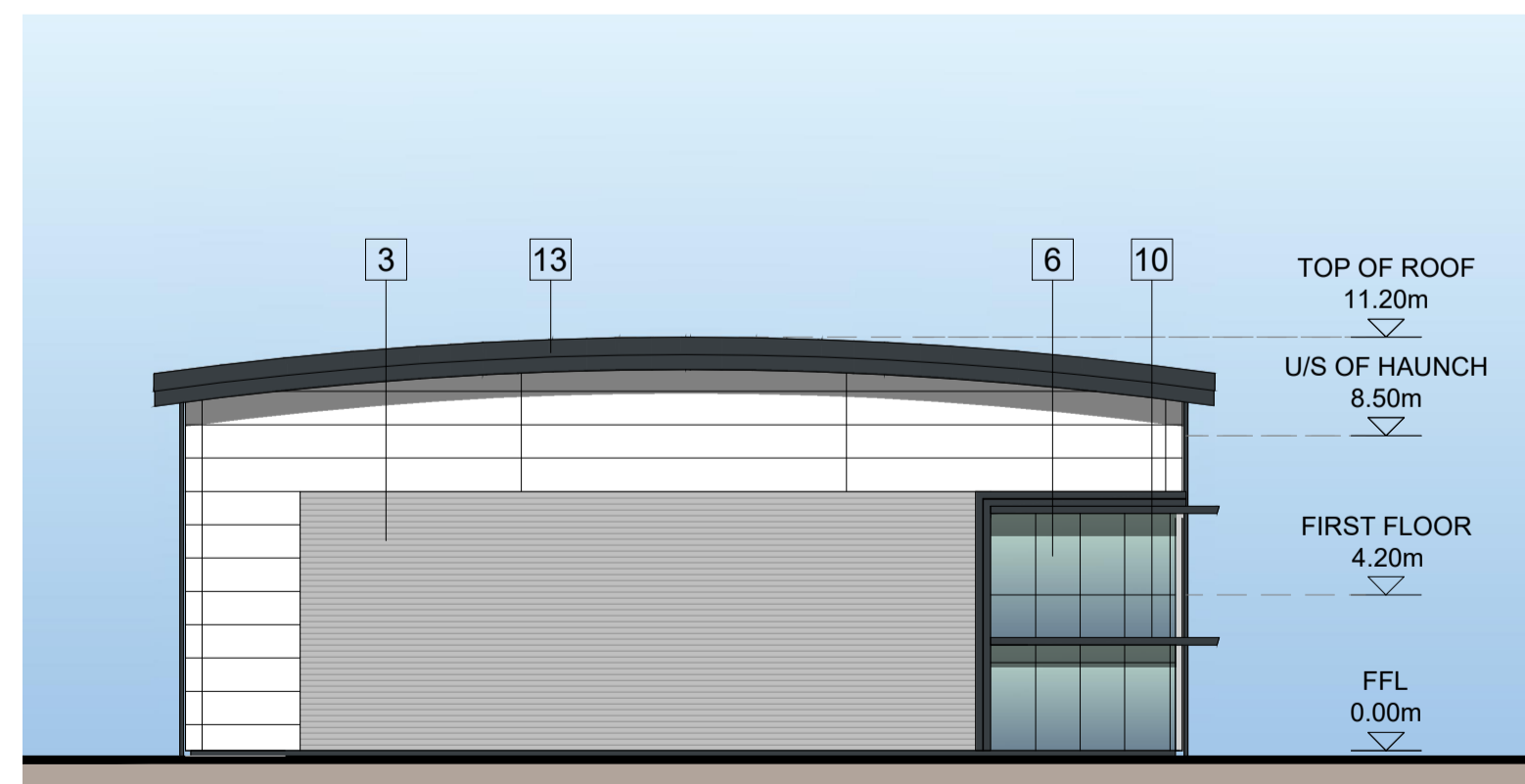
NORTH WESTERN ELEVATION



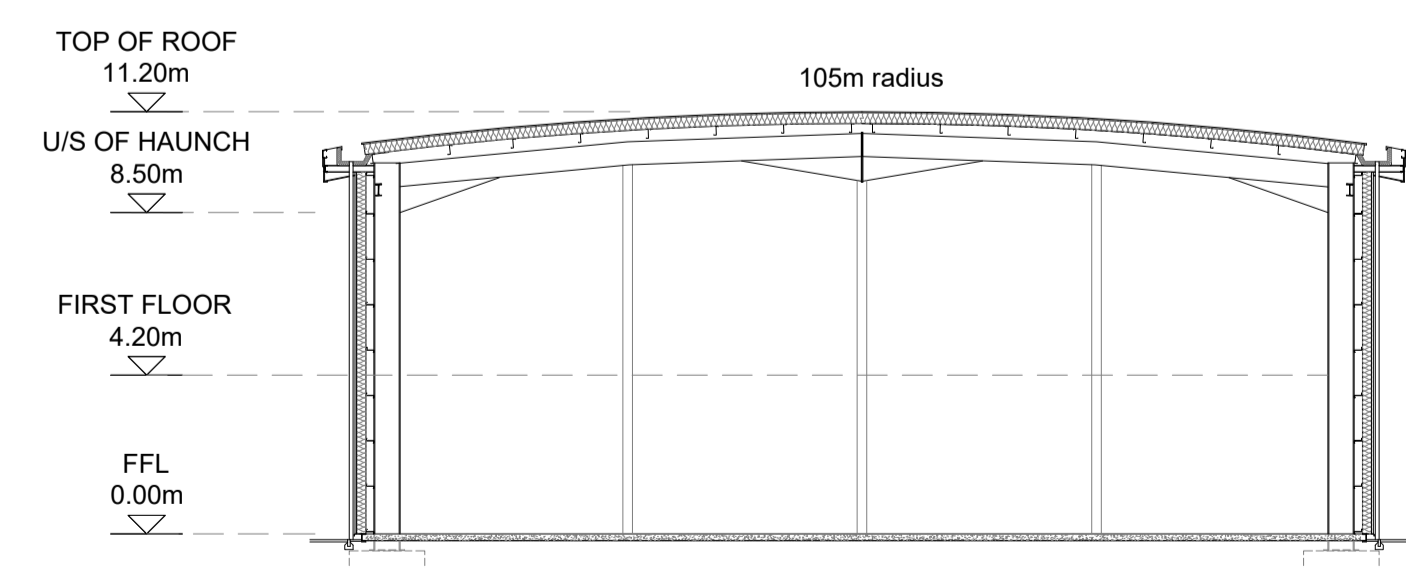
SOUTH EASTERN ELEVATION



SOUTH WESTERN ELEVATION



NORTH EASTERN ELEVATION



TYPICAL CROSS SECTION

- MATERIALS KEY**
- ① PROFILED ROOF CLADDING (GOOSEWING GREY RAL 7038)
 - ② BRICKWORK
 - ③ HORIZONTAL ARC PROFILE CLADDING (METALLIC SILVER RAL 9006)
 - ④ MICRO-RIB CLADDING (WHITE RAL 9010)
 - ⑤ ALUMINIUM FRAMED WINDOWS (ANTHRACITE RAL 7016)
 - ⑥ ALUMINIUM FRAMED DOUBLE ENTRANCE DOORS AND FULL HEIGHT GLAZING (ANTHRACITE RAL 7016)
 - ⑦ LOADING BAY DOORS (ANTHRACITE RAL 7016)
 - ⑧ STEEL PERSONNEL DOORS (ANTHRACITE RAL 7016)
 - ⑨ STEEL BOLLARD
 - ⑩ MAIN ENTRANCE BRISE-SOLEIL
 - ⑪ SIGNAGE ZONE, INDICATIVE
 - ⑫ ALUMINIUM UNIT NUMERAL
 - ⑬ FLASHING (ANTHRACITE RAL 7016)
 - ⑭ RAINWATER PIPE (ANTHRACITE RAL 7016)

Client:
XLB PROPERTY & PATRON HOOK LTD



Project:
BARTLEY WOOD BUSINESS PARK, HOOK

12 Warren Yard,
 Warren Park,
 Milton Keynes,
 MK12 5HW
 01908 305 246

info@prc-group.com
 www.prc-group.com

Drawing Title:
**UNITS 2-4
 PROPOSED ELEVATIONS
 & SECTIONS**

Scale @ A1: 1:200
 Checked by: ME
 Date: MAY 21

Job No: 11248
 Stage: PL 121
 Drawing No: B
 Rev: B

Issue Status:
 Construction Preliminary
 Information Approval
 Tender

Offices
 Working
 London
 Milton Keynes
 Warsaw

PRC Architecture & Planning

