



Compound 2 Canal Way, Ladbroke Grove

London, W10 5AZ

Open Storage Compound Available on Flexible Terms.

13,111 sq ft

(1,218.05 sq m)

- B8 Open Storage Use
- Self Contained, Secure Site
- 24/7 Access
- On Site Security
- Water & Electric Supply

Compound 2 Canal Way, Ladbroke Grove, London, W10 5AZ

Summary

Available Size	13,111 sq ft
Rent	£10 per sq ft
Business Rates	Upon Enquiry
VAT	Applicable
Legal Fees	Each party to bear their own costs
EPC Rating	EPC exempt - No building present

Description

The compound comprises a self-contained open storage space with hard-standing floor available on flexible terms. The compound is located within an established industrial estate with on-site security offering 24-hour access.

Location

The compounds are located on Canal Way which is situated just off of Ladbroke Grove behind Sainsbury's supermarket.

Nearby train stations include Kensal Green Underground Station (0.7 mi) served by the Bakerloo Line and London Overground and Ladbroke Grove Underground Station (0.8 mi) which is served by the Circle and Hammersmith & City Lines.

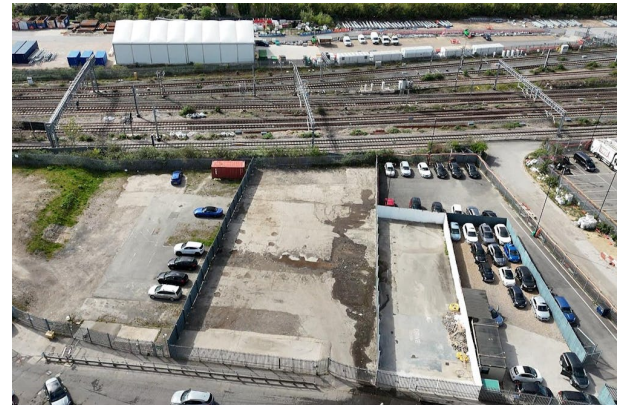
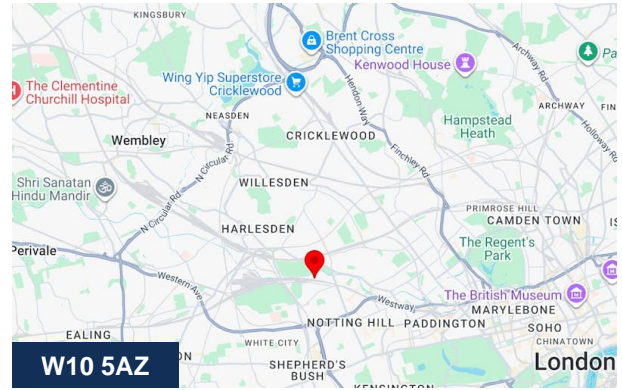
Accommodation

The accommodation comprises the following areas:

Name	sq ft	sq m	Availability
Outdoor	13,111	1,218.05	Available
Total	13,111	1,218.05	

Terms

The compounds are available by way of a 28-day rolling license.



Viewing & Further Information



Daniel Moriarty

020 8429 9009 | 07907 703 640

daniel@davidcharles.co.uk

The above information contained within this email is sent subject to contract. These particulars are for general information only and do not constitute any part of an offer or contract. All statements contained therein are made without responsibility on the part of the vendors or lessors and are not to be relied upon as statement or representation of fact. Intending purchasers or lessees must satisfy themselves, by inspection, or otherwise, as to the correctness of each of the statements of dimensions contained in these particulars. Generated on 13/04/2026

