



Ayers & Cruiks
COMMERCIAL

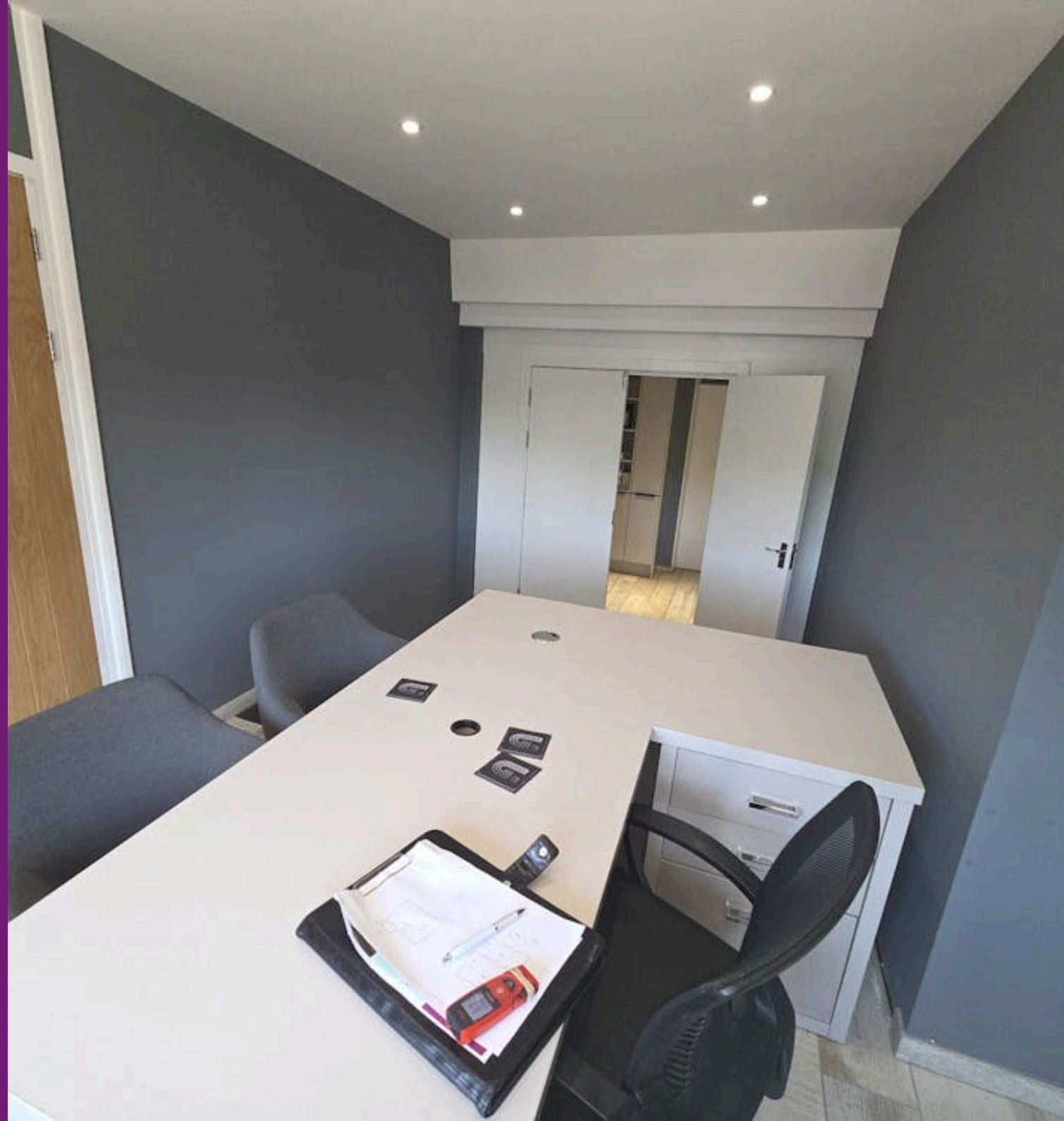
To Let

137 to 568 sq ft

**Lower Barn Farm, London
Road, Rayleigh, SS6 9ET**

Two office suites situated in
Rayleigh with communal
parking.

- Modern interior
- Convenient location
- All inclusive rent
- New lease available
- From £4,110 per annum



Lower Barn Farm, London Road, Rayleigh, SS6 9ET

Summary

- Rent: £4,110 - £10,775 per annum
- Business rates: Interested parties are advised to confirm the rating liability with the relevant local authority
- VAT: Not applicable
- Legal fees: Ingoing tenant is liable for both parties legal costs
- Lease: New Lease

Further information

- [View details on our website](#)

Contact & Viewings

Neil Burroughs
01702 608035
neil@ayerscruiks.co.uk

Cameron Cruiks
01702 608045
cameron@ayerscruiks.co.uk

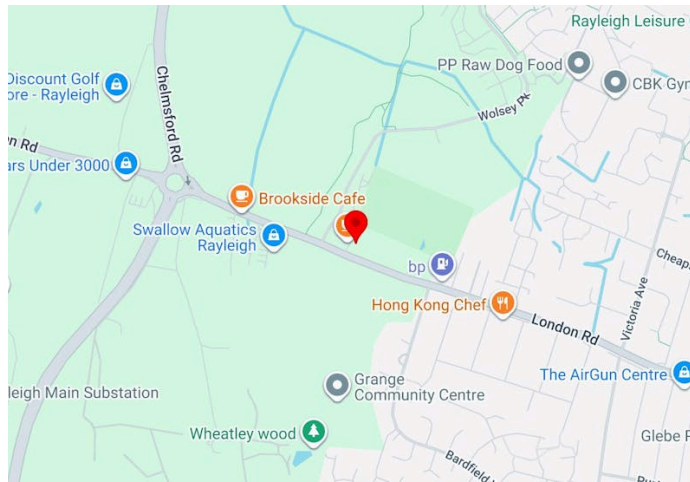
Darrell Clarke
01702 608039
darrell@ayerscruiks.co.uk

Bradley Hair
01702 608057
bradley@ayerscruiks.co.uk

Offices

86-88 Baxter Avenue,
Southend-On-Sea,
Essex,
SS2 6HZ
Tel: 01702 343060

Burgundy Court
64/66 Springfield Road,
Chelmsford,
Essex,
CM2 6JY
Tel: 01245 202555



Description

Two various sized office suites in good condition, benefitting from communal kitchen and WC facilities and communal parking.

Location

Lower Barn farm in Rayleigh is a semi rural location with convenient access to the A127, providing strong links to Southend-On-Sea and Basildon. Rayleigh town centre is close by, offering a range of retail, banking and food outlets, while Rayleigh train station provides regular services to London Liverpool Street.

Accommodation

Floor/Unit	Building Type	sq ft	sq m	Availability
Suite	Office	137	12.73	Available
Suite	Office	431	40.04	Available

Terms

Each unit is available to let on a new full repairing and insuring lease for a term to be agreed.

Viewings

Strictly by prior appointment via the landlords appointed agents Ayers & Cruiks.