

MIRALISBOA

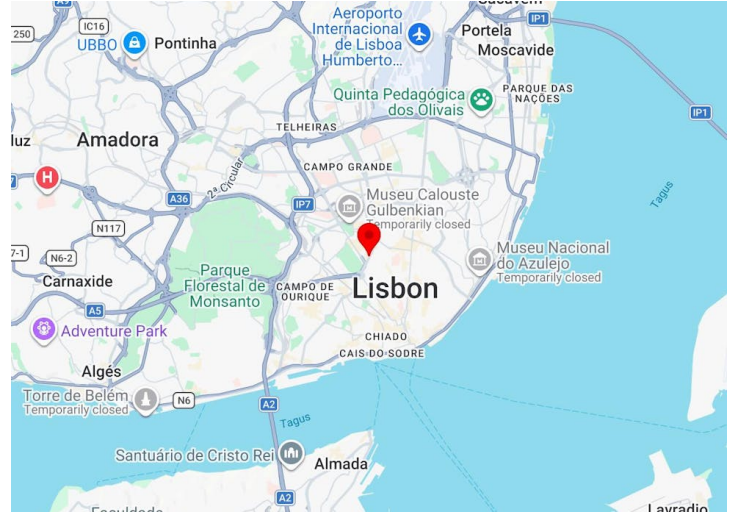
Av. Fontes Pereira de Melo 21, Lisboa



Key Highlights

- 193 m²
- Indoor parking spaces
- Ready for immediate occupancy
- Air conditioning in open space
- 12-hour security

MB4 Office Building
Avenida Miguel Bombarda, 4 - 7th Floor
1000-208 Lisboa
+351 21 313 90 00



Accommodation

Floor/Unit	Building Type	Size (m ²)	sq m	Rent (€/m ²)	Availability
1st	Office	193 m ²	193	€23 /m ²	Available
Total			193		

Description

Office building located on one of Lisbon’s most prestigious avenues, Avenida Fontes Pereira de Melo, offering modern and functional spaces ideal for companies that value centrality and accessibility. It benefits from a well-established surrounding area, with excellent transport links, services, and amenities.

Location

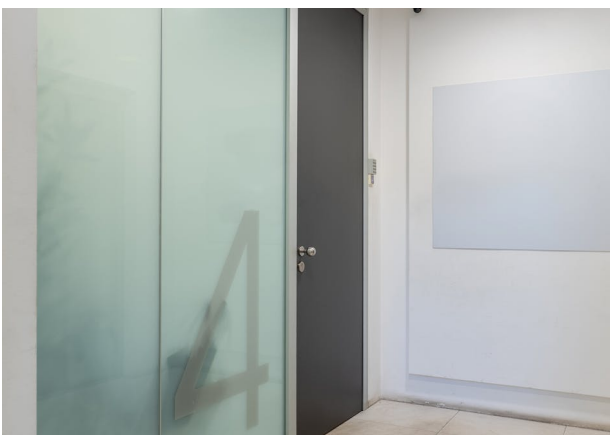
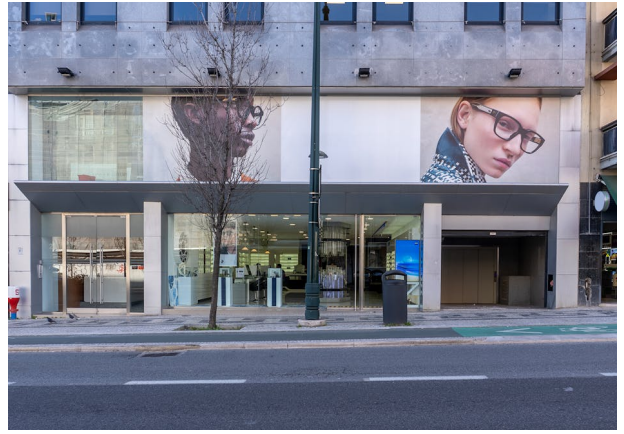
Prime office location on Avenida Fontes Pereira de Melo, one of Lisbon’s main business arteries, offering excellent visibility, accessibility, and immediate proximity to key transport links, services, and amenities.

Public Transport

The location on Avenida Fontes Pereira de Melo benefits from excellent public transport connections, including:

- Metro: Picoas Metro Station (Yellow Line) and Marquês de Pombal Metro Station (Blue and Yellow Lines) within walking distance
- Buses: several routes operated by Carris with stops along the avenue
- Road access: direct connection to Marquês de Pombal, one of the city’s main transport hubs

This ensures fast and convenient access across Lisbon and to its main business districts.









Frederico Leitão de Sousa

Associate Director | Head of
Offices

frederico.sousa@savills.pt
+351 910 484 140



Sofia Carvalho Costa

Senior Offices Consultant
sofia.costa@savills.pt

+351 913 080 061



Francisco Machado

Offices Consultant

francisco.machado@savills.pt
+351 911 110 072



José João Fernandes

Junior Consultant

jose.fernandes@savills.pt
351 914 122 423

NEED MORE DETAILS?
CONTACTS US

SAVILLS.PT | PORTUGAL@SAVILLS.PT | Lisbon +351 21 313 9000 | Porto +351 22 092 9000

