



Office To Let, Budapest

The Révy Office building is located in Budapest's heart, between Saint-Stephen's Basilika and the Hungarian State Opera House, just a five-minute walk by Deak Square, the main transport hub of the city. Initially delivered as a hotel, the building was reconfigured as an office but kept its historic facade. The central courtyard was reconfigured as atrium and lobby. The building is going through a major refurbishment and will be delivered as a turn-key

Get more information

Martina Cifer

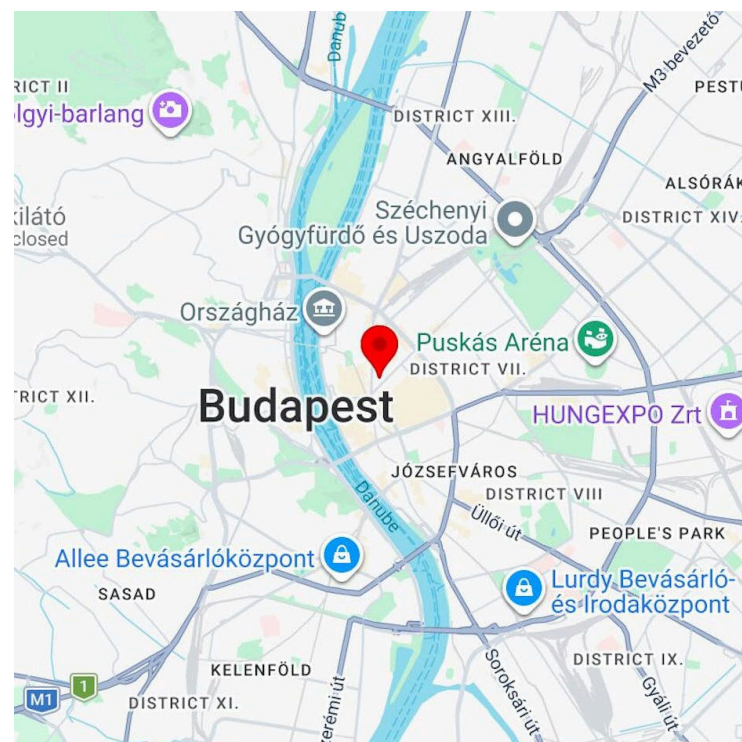
Director, Office Leasing

D +36 30 280 2545

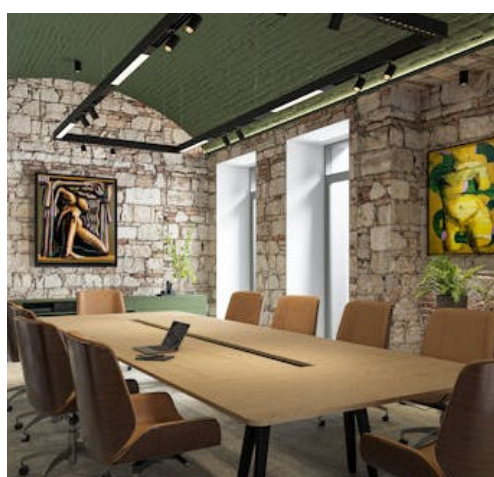
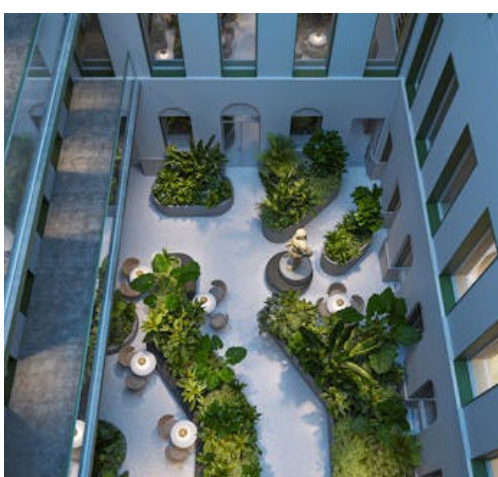
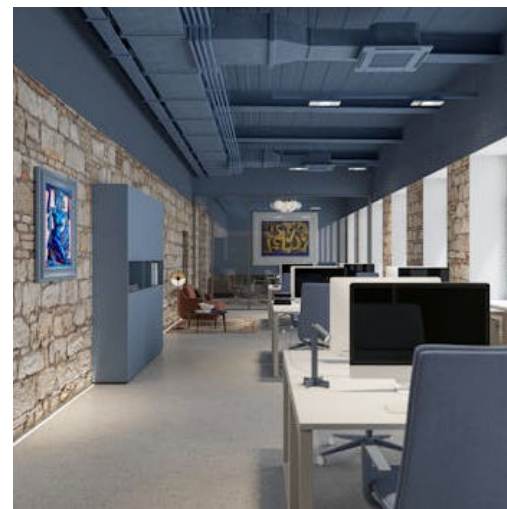
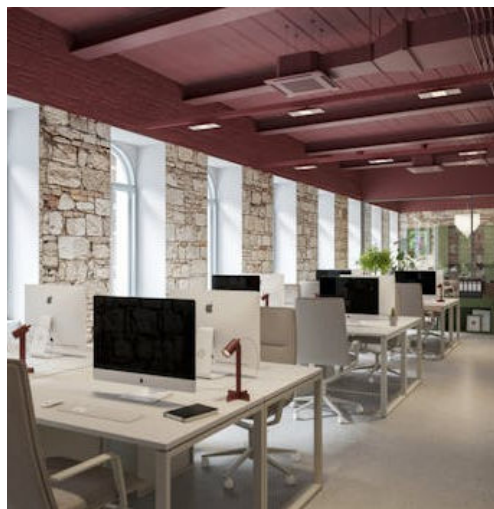
martina.cifer@avisonyoung.com

Offering Summary

Building size	3,500 sq m
Delivery date	1876
Refurbishment	2027
Category	A
Floors	4
Common area ratio	10%
Minimum leasable area	500 sq m
Lease rate	€24 - €28 per sq m (per month)
Service charge	€5 per sq m (per month)
Parking spaces	
Parking headline rent	

**Location and Access**

Metro: M1, M2, M3. Tram: 47, 49. Bus: 4, 9, 16. Trolleybus: 70, 72, 78.



Let's talk

Martina Cifer
Director, Office Leasing
D +36 30 280 2545
martina.cifer@avisonyoung.com