



**8 Stratfield Park, Elettra Avenue, Waterlooville, PO7 7XN**  
MID-TERRACE INDUSTRIAL/ BUSINESS UNIT WITH FIRST FLOOR OFFICE  
ACCOMODATION AND ALLOCATED PARKING - FOR SALE

### Summary

Tenure	For Sale
Available Size	3,096 sq ft / 287.63 sq m
Price	£480,000
Rateable Value	£31,250
EPC Rating	C (56)

### Key Points

- For Sale
- First Floor Office Space
- Easy Access to A3(M)
- Available for Occupation November 2026
- Shutter Access
- x8 Allocated Parking Spaces
- Loading - 3m (w) x 2.4 m (h)

Regulated by



**hi-m.co.uk**

PORTSMOUTH 023 9237 7800

SOUTHAMPTON 023 8011 9977

# 8 Stratfield Park, Elettra Avenue, Waterlooville, PO7 7XN

## Description

The property comprises a two storey mid-terrace industrial / business unit with part profile clad part brick elevations under a pitched roof. The unit has a workshop at ground floor level and first floor offices currently used as storage, boardroom and office space. There is a ground floor kitchen with WC (DDA), and first floor bathroom with shower. The premises has vehicular access via a roller shutter to the front elevation and benefits from allocated parking for 8 cars.

The property is available for occupation in November 2026

## Location

8 Stratfield Park is located in Waterlooville a growing town approximately 6 miles north east of Portsmouth a major regional port and hub for commercial activity which forms part of the south coast conurbation. The property is situated approximately half a mile north west of Waterlooville town centre and approximately 1.5 miles from the A3(M), which in turn provides direct access to the M27.

The local road network provides convenient access to London, Guildford, Chichester, Portsmouth and Southampton. The development is well served by public transport with a number of bus stops within walking distance.

## Accommodation

The accommodation comprises the following areas:

Name	sq ft	sq m	Availability
Ground	1,548	143.81	Available
1st	1,548	143.81	Available
<b>Total</b>	<b>3,096</b>	<b>287.62</b>	

## Specification

- Concrete ground floor
- Loading - 3m (w) x 2.4 m (h)
- 2.7 min eaves
- x8 parking spaces
- Gas central heating
- Kitchen
- DDA WC / GF WC
- 1st floor Bathroom + Shower

## Terms

Freehold sale with vacant possession - £480,000

\* Available for occupancy from November 2026

## Business Rates

£31,250 - Source: VOA

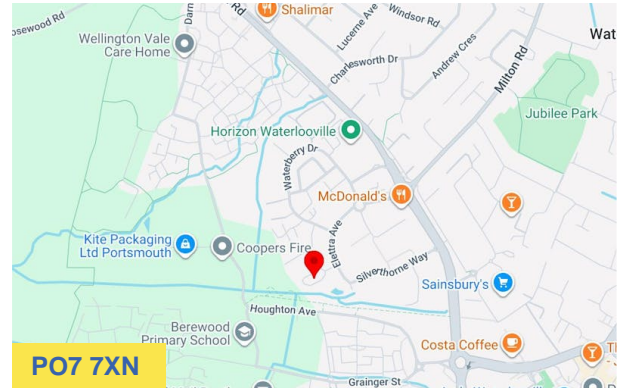
You are advised to speak with the local authority on matters relating to business rates.

## Other Costs

Legal Costs - Each party to be responsible for their own legal costs incurred in the transaction.

Unless otherwise stated all prices are exclusive of VAT

VAT - it is understood the property is NOT elected for VAT



## Viewing & Further Information

James West

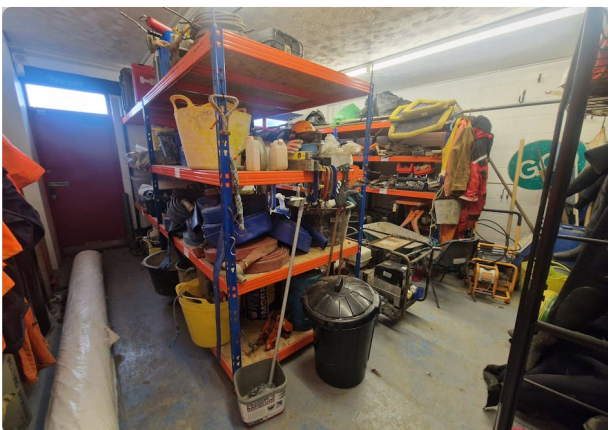
02392 377800 | 07415438230

James@hi-m.co.uk

More properties like this at [www.hi-m.co.uk](http://www.hi-m.co.uk)



For the Lessors or Vendors of this instruction, whose Agents they are, give notice that: These particulars are set out as general guidance only to intending Purchasers or Lessees, and do not constitute any part of an offer or contract. Details are given without any responsibility and any intending Lessees, Purchasers or Third Parties should not rely on them as statements or representations of fact, but must satisfy themselves by inspection or otherwise as to the correctness of each of them. No person in the employment of Holloway Iliffe & Mitchell has any authority to make any representation or warranty whatsoever in relation to this property. Unless stated, all prices and rents are quoted exclusive of VAT. Generated on 28/04/2026







# Unit 8 Stratford Park, Elettra Avenue, Waterloooville PO7 7XN

