



## **156 Dukes Road**

London, W3 0SL

**Light industrial / warehouse  
property split over 2 storeys  
available on flexible terms.**

**11,352 sq ft**

(1,054.64 sq m)

- Clear open plan layout
- Ground floor 4.419m floor to ceiling height
- 1st Floor 3.830m rising to 4.120m floor to ceiling height
- Dedicated loading bay & electric rolling shutter
- Concrete floor
- 3 phase 100 amp power supply
- Allocated parking
- W/C

# 156 Dukes Road, London, W3 0SL

## Summary

Available Size	11,352 sq ft
Rent	£171,480 per annum
Business Rates	Upon Enquiry
VAT	Applicable
Legal Fees	Each party to bear their own costs
EPC Rating	D

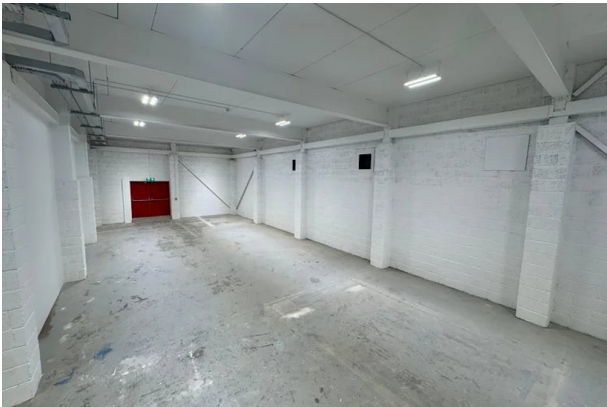
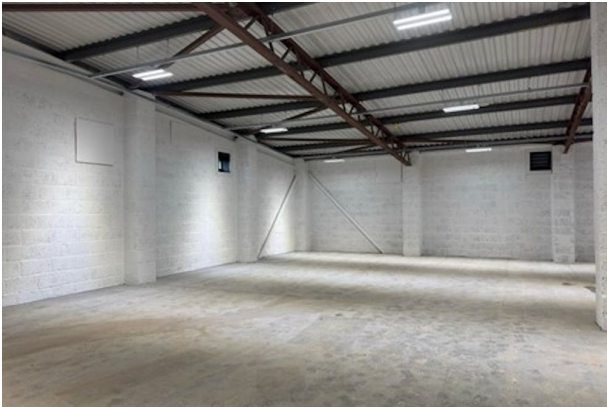
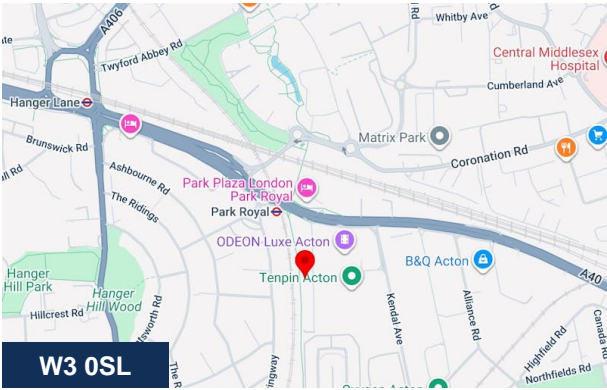
## Description

156 Dukes Road comprises of a two level Warehouse Unit currently being renovated. It benefits from double shutter access ideal for a variety of commercial uses including storage, distribution or light manufacturing.

## Location

Strategically located near the A40 and North Circular, our Park Royal warehouses are ideal for businesses needing industrial space with excellent transport links to London and the rest of the country. Park Royal, North Acton Underground and Willesden Junction Station are nearby too.

Park Royal is also home to array of shops and restaurants, plus there's a cinema, bowling alley and gym.



## Viewing & Further Information



**Finlay Milnes**  
020 8429 9009 | 07522 700 508  
finlay@davidcharles.co.uk



**George Moriarty**  
020 8429 9003 | 07522 700 507  
george@davidcharles.co.uk

The above information contained within this email is sent subject to contract. These particulars are for general information only and do not constitute any part of an offer or contract. All statements contained therein are made without responsibility on the part of the vendors or lessors and are not to be relied upon as statement or representation of fact. Intending purchasers or lessees must satisfy themselves, by inspection, or otherwise, as to the correctness of each of the statements of dimensions contained in these particulars. Generated on 14/10/2025



