



Yard at Hillcrest Nursery, Bedford Road, Holwell, SG5 3RT

Prominent Yard Space on Arterial Route

Summary

Tenure	To Let
Available Size	14,512 sq ft / 1,348.21 sq m
Rent	£50,000 per annum
EPC Rating	EPC exempt - No building present

Key Points

- Prominent Position
- Gated Entrance
- Electric Supply
- Broadband Connection
- Fenced Perimeter
- Refurbished Office/Cabin
- Water Supply
- WC

Yard at Hillcrest Nursery, Bedford Road, Holwell, SG5 3RT

Location

The site occupies a prominent position on the A600 (Bedford Road) which forms an arterial route between Hitchin and Bedford.

Description

The site measures as follows (0.333 acre | 14,512 sqft | 1,348 m2) and benefits from the following:

- Concrete surface.
- Fenced perimeter.
- Gated entrance off Bedford Road.
- Office cabin (redecorated to include new door, double-glazed windows and new flooring).
- Single phase electric.
- Water supply.
- Broadband connection.

Terms

The site is available upon a new lease for £50,000 per annum exclusive.

Rateable Value

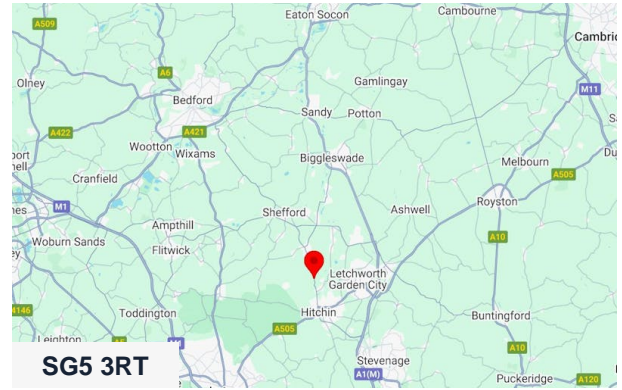
The rateable value is to be confirmed.

VAT

All costs are subject to VAT at the appropriate rate if applicable.

Legal Costs

Each party is to bear its own costs incurred.

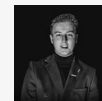


Viewing & Further Information



Stephen Wood

01582 401 221 | 07798 610 003
s.w@srwood.co.uk



Jacob Wood

01582 401 221 | 07401 221 022
j.w@srwood.co.uk