

TO LET

**LARGE RETAIL UNIT
HAYWARDS HEATH TOWN CENTRE
140 SQ M (1,507 SQ FT)**

7-9 The Broadway, Haywards Heath, RH16 3AQ



Summary

Available Size	1,507 sq ft
Rent	£20,000 per annum exclusive
Business Rates	A Rateable Value of £18,250 with a UBR of 49.9p in £.
EPC Rating	D (79)

Location

Haywards Heath is an affluent commuter town located approximately 8 miles south of Crawley/Gatwick Airport and 12 miles north of Brighton and can be easily accessed via the A23, approximately 5 miles distant. Haywards Heath's mainline railway station offers direct services to London terminals in approximately 44 minutes. The property occupies a prominent location on The Broadway at its junction with South Road, two of Haywards Heath's main commercial thoroughfares. Occupiers within the proximity of the subject property include Pizza Express, Zizi's, Soma Reformer Pilates and Ignite cycling.

Description

This double fronted retail unit benefits from full height display windows and is currently configured to provide an open plan layout with a kitchenette, WC and two electric roller shutters. The space could be altered to suit an in going tenant.

Accommodation

The accommodation comprises the following areas:

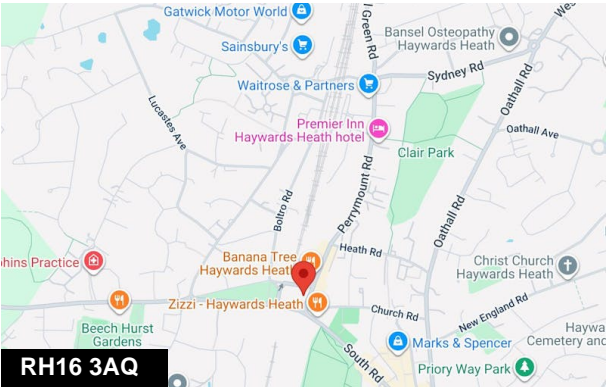
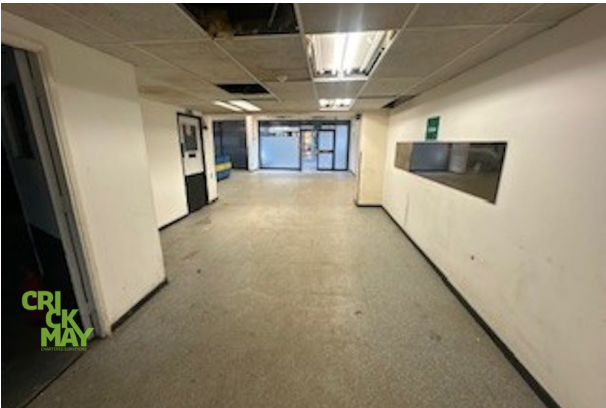
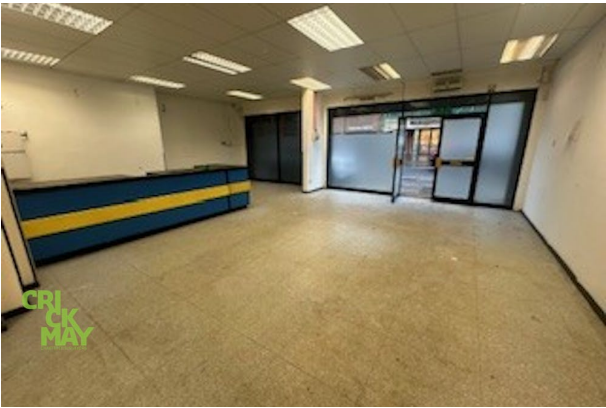
Description	sq ft	sq m
Ground Floor	1,507	140

License

A new short term license is available on terms to be agreed. More details available upon enquiry.

VAT

VAT is applicable on the terms quoted.



Viewing & Further Information



Phoebe Taylor
01444 443400
pt@crickmay.co.uk

More details @ [crickmay.co.uk](https://www.crickmay.co.uk)



Crickmay Chartered Surveyors
7 Muster Green, Haywards Heath, West Sussex, RH16 4AP
T: 01444 443400 | [crickmay.co.uk](https://www.crickmay.co.uk)

Particulars contained herein are for guidance only and their accuracy is not guaranteed neither do they form any part of a contract. All figures quoted are exclusive of VAT if applicable.

