



Fully fitted and flexible offices to let, in central Hammersmith.

227 Shepherd's Bush Road

Hammersmith, Hammersmith, W6 7AS

Serviced Office

TO LET

196 to 3,531 sq ft

(18.21 to 328.04 sq m)

227 Shepherd's Bush Road, Hammersmith, Hammersmith, W6 7AS

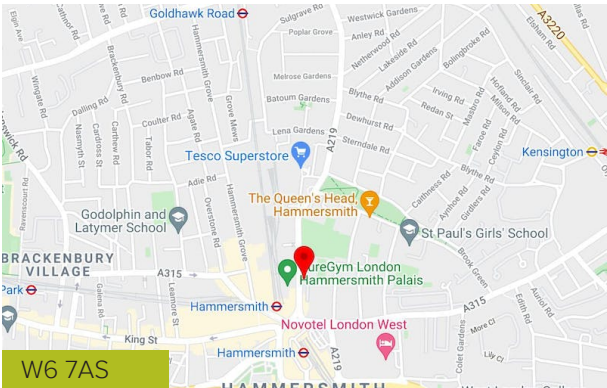
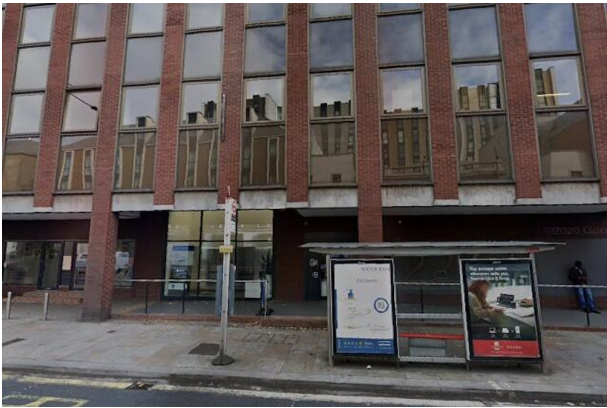
Summary

Available Size	196 to 3,531 sq ft
Rent	£1,200 - £7,100 per sq ft
Business Rates	Upon Enquiry
EPC Rating	Upon Enquiry

Accommodation

The accommodation comprises of the following

Name	sq ft	sq m	Availability
Unit - 7a	196	18.21	Available
Unit - 2	218	20.25	Available
Unit - 1	257	23.88	Available
Unit - 5	262	24.34	Available
Unit - 7b	267	24.81	Available
Unit - 9	393	36.51	Available
Unit - 8	639	59.37	Available
Unit - 10	1,299	120.68	Available
Total	3,531	328.05	



Viewing & Further Information



Harry Pruden
020 3130 6416 | 07721 128 796
hpruden@hanovergreen.co.uk



Richard Zoers
02031306414 | 07730567607
rzoers@hanovergreen.co.uk



David Cuthbert
020 3130 6401 | 07710 183 423
dcuthbert@hanovergreen.co.uk

