

## Office, High Street Retail To Let

£140,000 per annum Rent  
Free Period Available  
4,494 sq ft

137 Ladbroke Grove,  
London, W11 1PR

Substantial Corner Freehold  
Available To Let

- Prominent High Street location
- Former Bank Building available on an FRI lease
- Substantial floor plates across 4 levels
- Favourable Leasing Terms available
- Circa. 4,494 sq.ft. (418 sq.m.)



# 137 Ladbroke Grove, London, W11 1PR

## Summary

- Rent: £140,000 per annum Rent Free Period Available
- Lease: New Lease

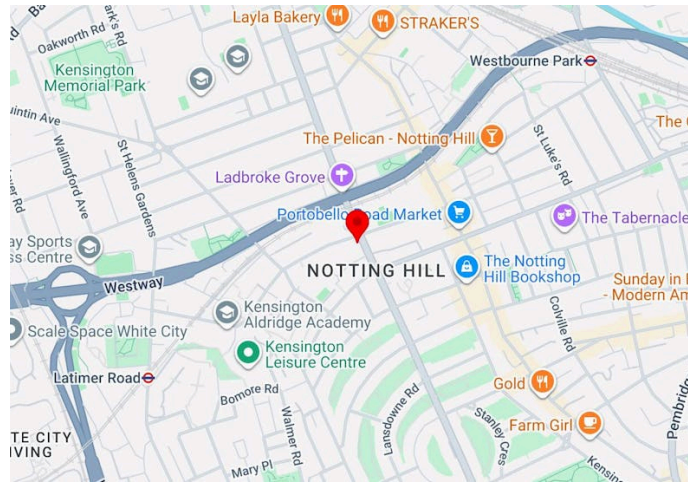
## Further information

- [View Microsite](#)

## Contact & Viewings

Adam Stackhouse  
07889 510036  
adam@meridiancp.co.uk

Alex Ogilvie  
07414 281406  
alex@meridiancp.co.uk



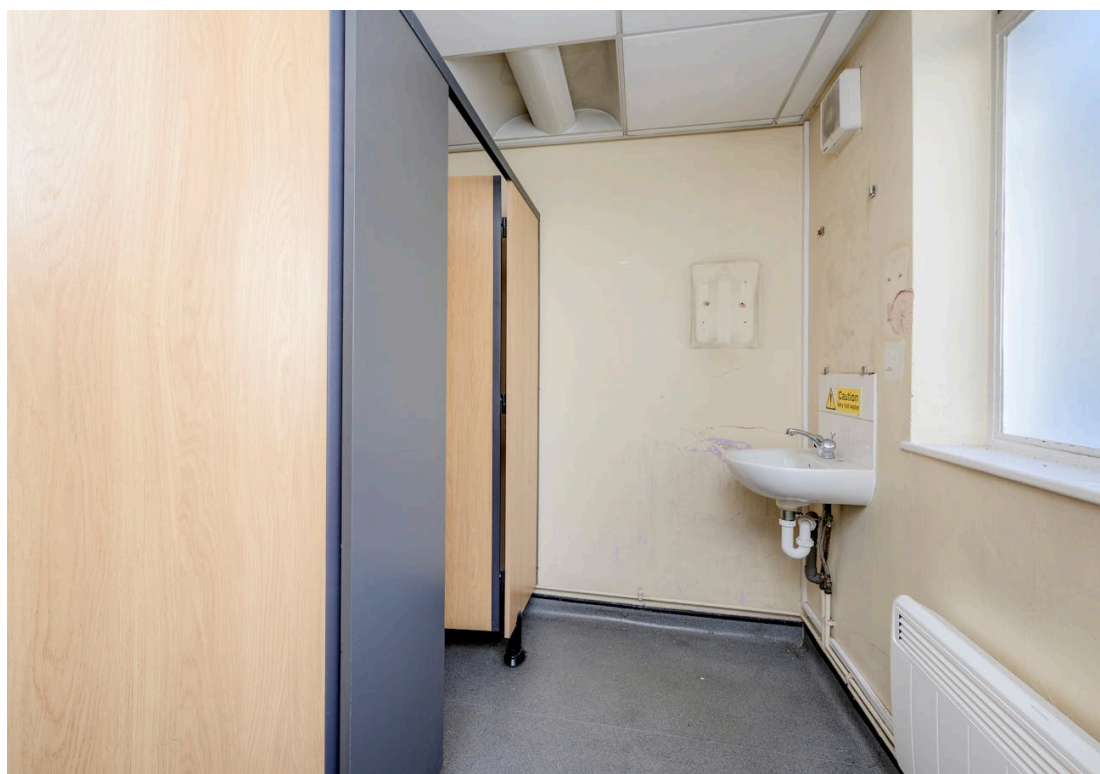
## Description

Meridian Commercial are delighted to present this iconic corner building in the heart of Ladbroke Grove, W11. Formerly Barclays Bank, the entire building is now available For Lease on commercially favourable terms. Arranged across three floors over basement, there is off street parking and a small secure yard.

## Location

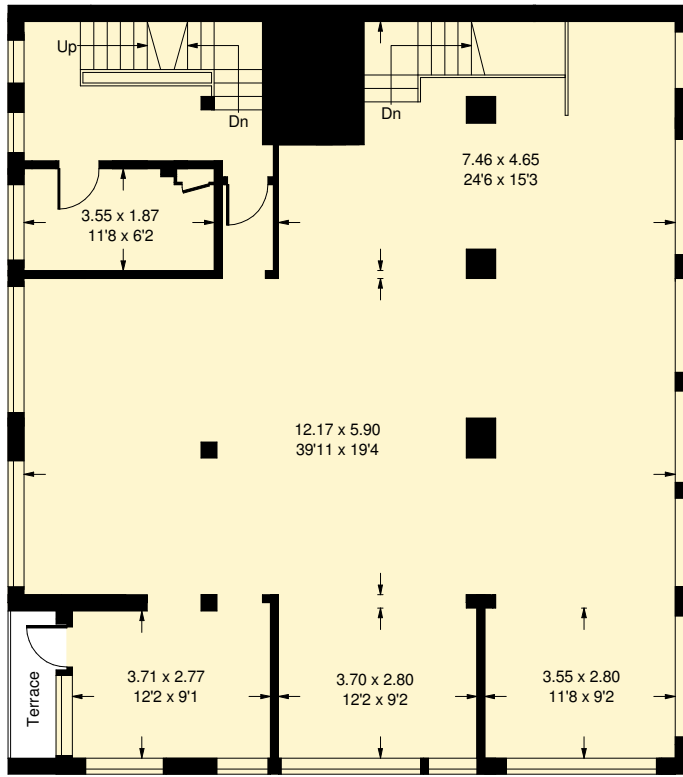
Situated in a prime part of Ladbroke Grove, the property is within a short walking distance of Ladbroke Grove Underground Station and the iconic Portobello Road Market, offering excellent connectivity for staff and clients alike. The surrounding area is home to a dynamic mix of established brands and independent operators, with nearby occupiers including Loaf, Sainsburys, Tesco, Daakoo, KFC, Pret A Manger, and Caffè Nero.



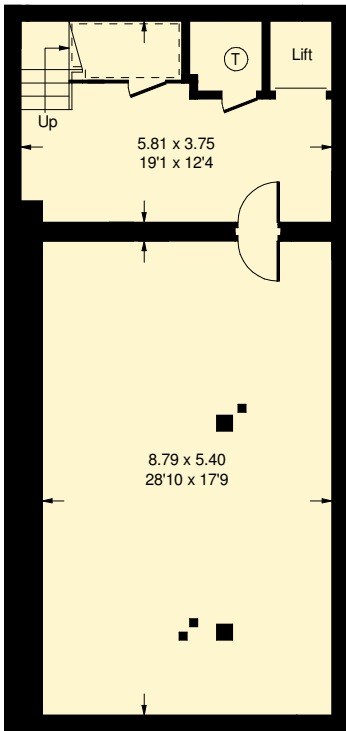


# Ladbroke Grove, W11

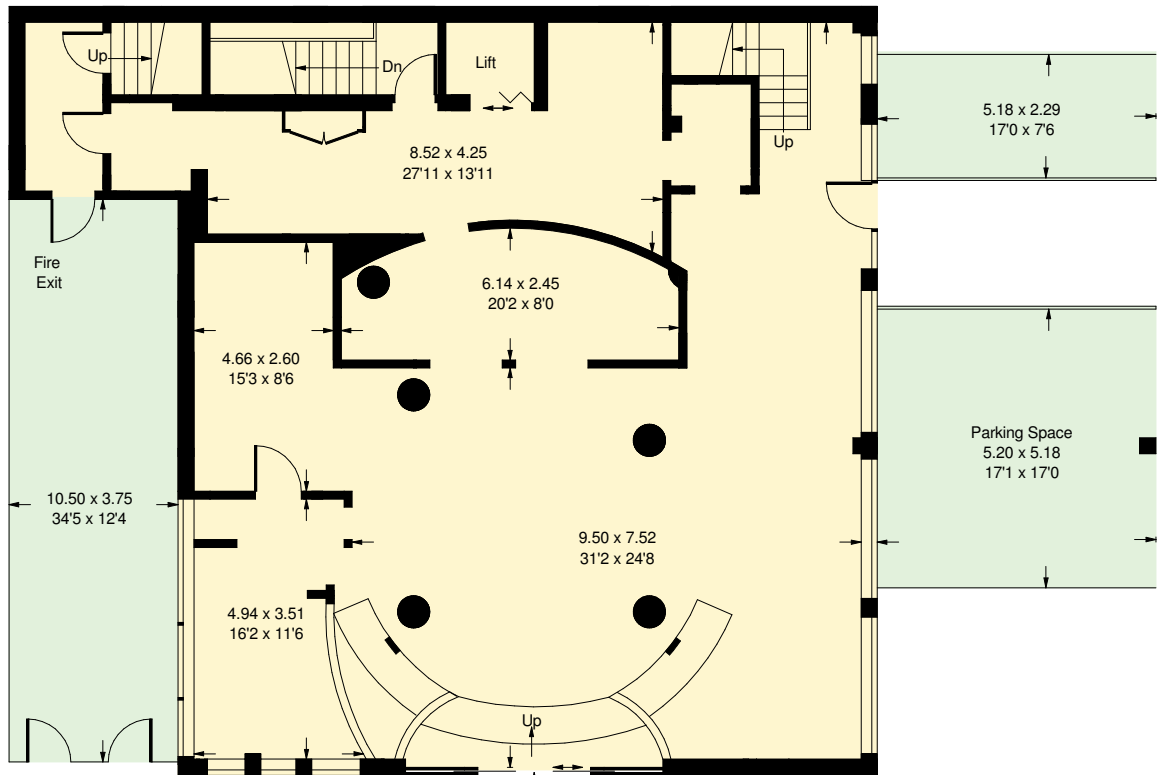
Approx Gross Internal Area  
417.5 sq m / 4494 sq ft  
(Including Lift)



First Floor



Lower Ground Floor



Ground Floor

Whilst every attempt has been made to ensure the accuracy of the floor plan, measurements are approximate and not to scale. No guarantee is given on the total square footage of the property quoted on the plan. Figures given are for guidance. Plan is for illustration purposes only, not to be used for valuations.