

# 6 Snow Hill, London, EC1A 2AY



**TO LET**

Serviced Office

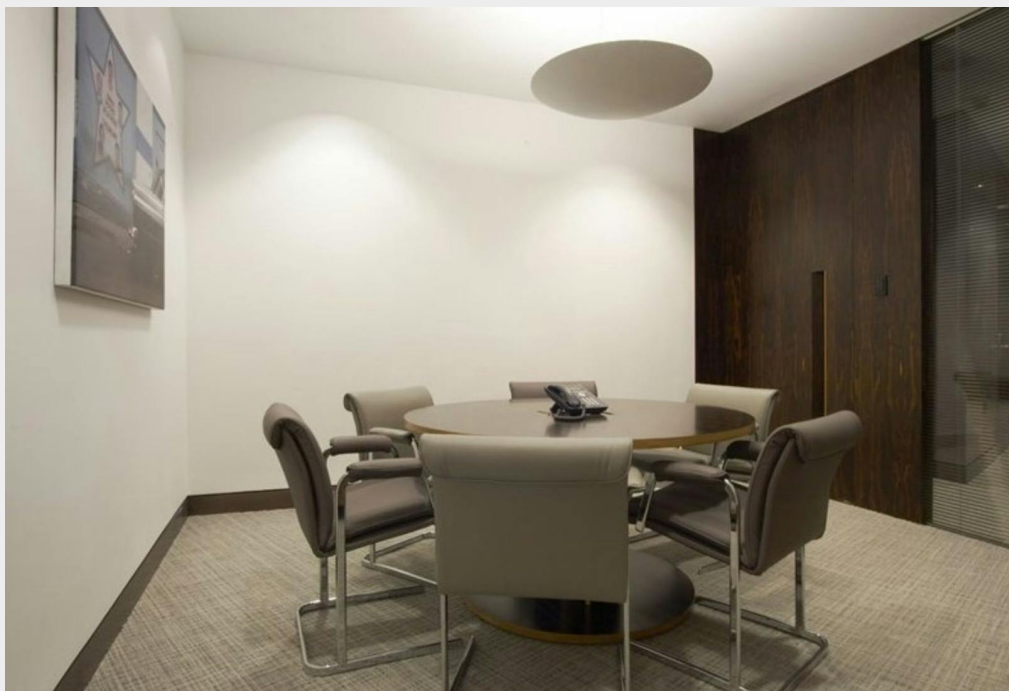
2 to 17 Desks

£1,500 - £10,000 per month

# Boutique serviced offices conveniently positioned between Farringdon and St. Paul's



- Fully-furnished, climate-controlled suites
- Beautiful client lounges and break out spaces
- Secure electronic access 24/7
- Fully-equipped kitchens
- Dedicated dual-fibre with 24/7 uptime
- Friendly reception team
- Terrace (subject to availability)
- Fully equipped meeting rooms
- Cycle Parking

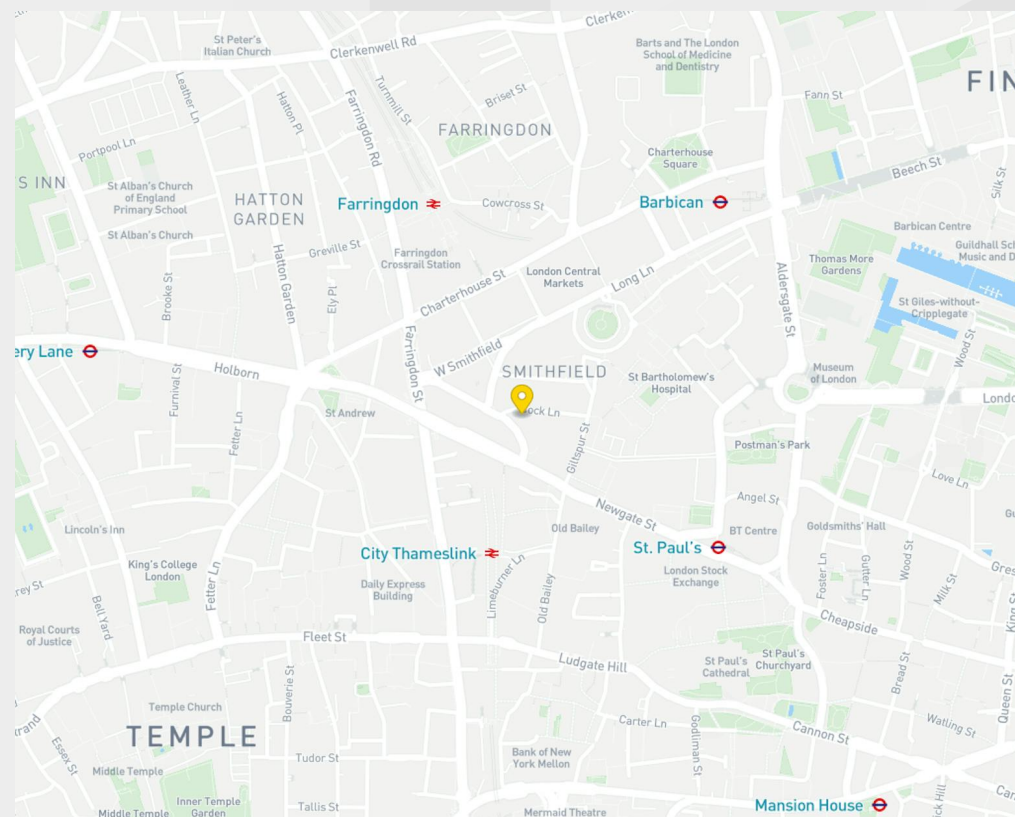


## Description

Striking modern building with an impressive entrance lobby approach and quality lounge, meeting and breakout facilities. More than just a business centre, these prestigious serviced offices combine modern innovative workspace with thoughtful lifestyle extras, in a discreet, unbranded environment.

## Location

Located in the heart of Central London, conveniently positioned between the City, the law courts of Midtown and the media and design hotspot of Farringdon. Within walking distance is Farringdon Station with access to the Elizabeth, Hammersmith & City, Metropolitan, Central and Circle lines and Thameslink services. St Paul's and City Thameslink stations are also close by.



## Accommodation / Availability

Unit	Size	Rent	Availability
Unit - 4.06	14 Desks	£5,850 /month	Available
Unit - 2.05	11 Desks	£4,950 /month	Available
Unit - 3.09	5 Desks	£2,450 /month	Available
Unit - 5.04-05 + meeting room	17 Desks	£10,850 /month	Available
Unit - 4.0	2 Desks	£1,150 /month	Available
Unit - 1.04	7 Desks	£3,350 /month	Available
Unit - 4.09	5 Desks	£2,450 /month	Available
Unit - 3.01	11 Desks	£4,650 /month	Available

### Tenure

New Lease

### EPC

C

### VAT

Applicable

### Configuration

Fitted

### Contacts

Tom Schwier  
07583 037 559  
tom.schwier@strettons.co.uk

Joel Barnes  
07974 625 109  
joel.barnes@strettons.co.uk



### Further Information

[View on Website](#)

Strettons and their clients give notice that: 1. They are not authorised to make or give any representations or warranties in relation to the property either here or elsewhere, either on their own behalf or on behalf of their client or otherwise. They assume no responsibility for any statement that may be made in these particulars. These particulars do not form part of any offer or contract and must not be relied upon as statements or, representations of fact. 2. Any areas, measurements or distances are approximate. The text, photographs and plans are for guidance only and are not necessarily comprehensive. It should not be assumed that the property has all necessary planning, building regulation or other consents and the Agents have not tested any services, equipment or facilities. Purchasers must satisfy themselves by inspection or otherwise. Generated on 03/04/2025