



Premium Office Space Overlooking Hyde Park - To Let

1 Knightsbridge

SW1X 7LX

Office

TO LET

7,244 sq ft

(672.99 sq m)

- Premium Refurbished Cat A Offices
- Views Overlooking Hyde Park
- Concierge Reception, Large Atrium & Lounge
- EPC A & BREEAM Excellent
- 4 x Passenger Lifts
- 112 bike racks, 152 lockers and 16 showers
- Ground floor café and atrium club lounge
- VRF Air Conditioning
- 2.86m floor-to-ceiling heights

1 Knightsbridge, London, SW1X 7LX

Summary

Available Size	7,244 sq ft
Rent	£115 per sq ft
Rates Payable	£45 per sq ft
Service Charge	£19.15 per sq ft
Estate Charge	N/A
EPC Rating	A

Description

This 7,244 sq ft office space has been comprehensively refurbished to Cat A specification. The space available to let on the 1st floor of 1 Knightsbridge with stunning views overlooking Hyde Park.

Location

Prime location overlooking Hyde Park and Green Park, this is one of the most desirable locations in the capital. Hyde Park Corner (Piccadilly line), Knightsbridge (Piccadilly line), Victoria (National Rail, Victoria, Circle & District lines) and Green Park (Piccadilly, Victoria, & Jubilee lines) are all within short walking distance.

Accommodation

The accommodation comprises the following areas:

Name	sq ft	sq m	Availability
1st - Part	7,244	672.99	Available
Total	7,244	672.99	

Specification

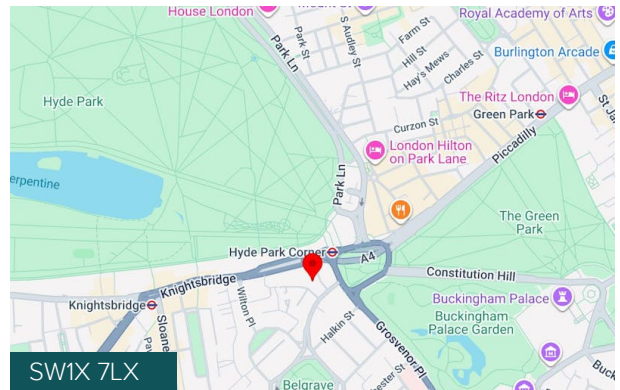
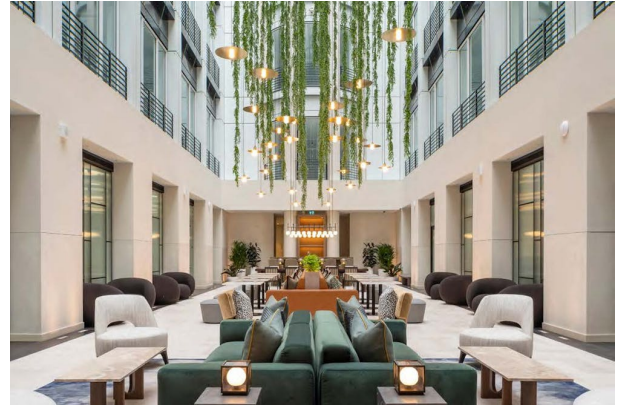
- Premium Refurbished Cat A Offices
- Landmark Office Building
- Views Overlooking Hyde Park
- Concierge Reception, Large Atrium & Lounge
- EPC A & BREEAM Excellent
- 4 x Passenger Lifts
- 112 bike racks, 152 lockers and 16 showers
- Ground floor café and atrium club lounge
- VRF Air Conditioning
- 2.86m floor-to-ceiling heights

Viewings

Through joint agents Hanover Green & CBRE

Terms

Available on a new sublease on terms by arrangement



Viewing & Further Information



Guy Milne

07775 897919

gmilne@hanovergreen.co.uk



George Brewster

07745 606874

gbrewster@hanovergreen.co.uk

Celeste Savage (CBRE LTD)

07940002601

Harry Tentori (CBRE LTD)

020 3257 6395 | 07787698421

