



Unit 70, Coursers Farm, Coursers Road, Colney Heath, AL4 0PD

To Let | 3,528 sq ft

Secure Open Storage Yard - To Let

Summary

- Rent: £22,900 per annum
- Lease: Assignment
- Terms: Assignment of lease ending September 2030

Description

The property comprises a secure yard laid to concrete hard standing and includes two modular office units.

Location

Coursers Farm is located on Coursers Road, which links the village of Colney Heath with the M25 at J22. The property is approximately 1.6 miles from J22 so offers quick access to the national motorway network. J6a of the M1 is less than 6 miles west whilst the A1(M) at South Mimms is less than 4 miles to the east.

Accommodation

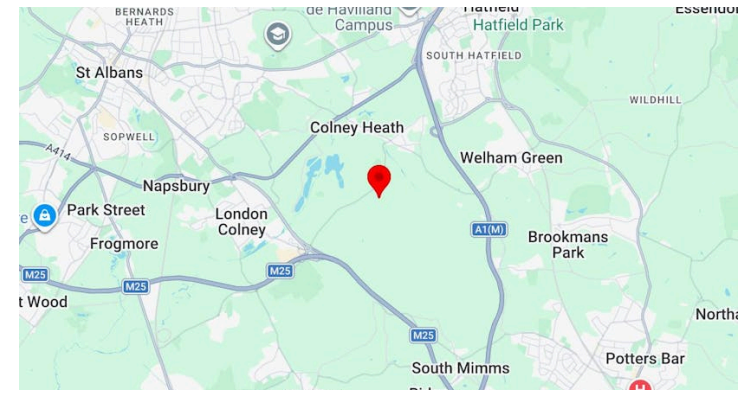
Name	sq ft	sq m
Unit - 70	3,528	327.76
Total	3,528	327.76

Key Points

- Quick access to M25 (J22)
- M1 (J6a) less than 6 miles
- Laid to hardstanding
- Secured fenced and gated site
- Two modular office units included

Terms

The yard is available either by way of assignment of the current lease or on a new longer lease direct from the landlords.



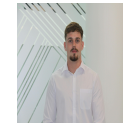
Further information

- [View details on our website](#)

Contact & Viewings



Graham Payne
| 07801 098096
graham.payne@stimpsons.co.uk



Harrison Hobbs
01923 604 025 | 07990 052 413
harrison.hobbs@stimpsons.co.uk

Viewings

Strictly by appointment via sole agents.



