



33 Broadwick Street

London, W1F 0DQ

Two enterprise units within FORA's Broadwick Street building offering full access to their entire portfolio of 70 buildings and amenity.

2,092 sq ft
(194.35 sq m)

- Gym
- Roof Terrace
- Excellent breakout space and lounges
- Access to over 70 buildings with industry leading amenity
- Fully-inclusive pricing
- Flexible contract lengths
- Event space
- Bookable meeting rooms
- Podcast/Recording Studios

33 Broadwick Street, London, W1F 0DQ

Summary

Available Size	2,092 sq ft
Rent	non-quoting
EPC Rating	Upon enquiry

Description

Energise your business at media-inspired Broadwick Street in the heart of Soho. From pitching to podcasting, you can make waves with your Monday to Friday in a stimulating workspace which features Soho Radio's on-site recording studio. Every floor catches the eye with a bold, contrasting colour palette, while soundproof phone booths, bookable meeting rooms and collaborative breakout spaces give you everything you need to get in the zone. For a change of scenery, the building's roof terrace presents stunning views of Soho, London Eye and Houses of Parliament, while an on-site gym offers invigoration and convenience away from the desk.

Location

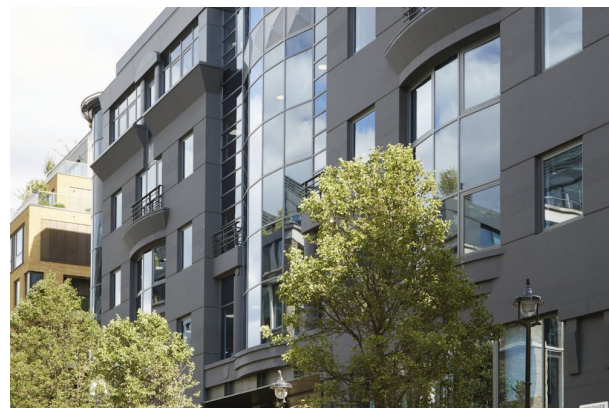
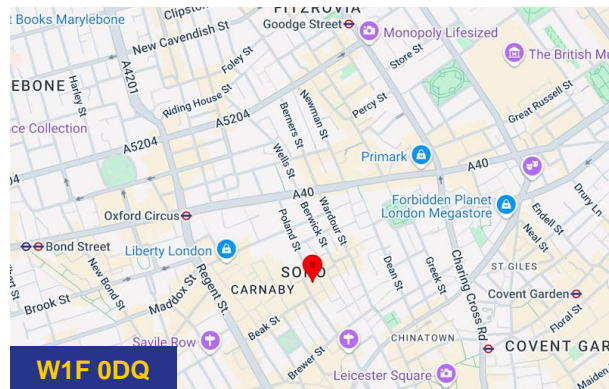
Creativity knows no bounds in Soho, an enviable central location for all types of businesses. Rub shoulders with world-famous brands, global agencies and creative studios amid the historic, buzzing streets of Soho. Situated right in the heart of Soho, this building is less than a 5 minute walk away multiple stations offering you access to the Victoria, Piccadilly, Northern, Central and Elizabeth lines making it ideal for almost every commute.

Broadwick Street is surrounded by a number of Fora neighbours, stretching from the quieter north of Oxford Street to bustling Wardour Street. Each amenity-packed workspace is elegantly designed to meet all the needs of you and your business.

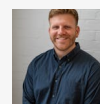
Accommodation

The accommodation comprises the following areas:

Name	sq ft	sq m	Availability
3rd - East Enterprise Unit	2,092	194.35	Available
4th - Whole Floor Enterprise Unit	5,167	480.03	Let
Total	7,259	674.38	



Viewing & Further Information



Luke Parkinson
07464715644
Luke.Parkinson@kontor.com



Andrew Gibson
0203 770 4279 | 07866602381
andrew@kontor.com