



## Former ATS Centre

Oldbury Road, Tewkesbury, GL20 5LU

**Rare Opportunity to Acquire  
a Tyre & Exhaust Premises -  
Suitable for Alternative Uses  
Subject to Planning**

**3,941 sq ft**  
(366.13 sq m)

- Vacant Possession
- Excellent Roadside Frontage
- 0.3 Mile from Town Centre
- 0.129 Acre Site Area

## Summary

<b>Available Size</b>	3,941 sq ft
<b>Price</b>	Offers in excess of £270,000
<b>Rates Payable</b>	£7,668 per annum Current 2026/2027 Rates List
<b>Rateable Value</b>	£17,750
<b>EPC Rating</b>	Upon enquiry

## Description

The property comprises a detached industrial unit with a forecourt area to the front which provides parking and access to the unit via a pedestrian and single loading door. The unit is configured on a concrete frame with elevations of brick with timber glazed panels under a pitched roof. Internally, the unit is configured as a workshop, reception, office and WCs with a clear eaves height of 3.38m and a large roller shutter door.

## Location

The property is situated approximately 0.3 of a mile north of Tewkesbury town centre fronting onto Oldbury Road, a predominantly residential street which runs parallel and to the east of Tewkesbury High Street. Access to Junction 9 of the M5 motorway c.2 miles distant is via High Street and the A438, giving access to the national motorway network. Bristol is c. 48 miles to the south west via the M5 motorway.

## Accommodation

The accommodation comprises the following areas:

Name	sq ft	sq m
Ground - Workshop	3,494	324.60
Ground - Office/Reception/WC	447	41.53
<b>Total</b>	<b>3,941</b>	<b>366.13</b>

## Tenure

The property is available freehold with vacant possession.

## Terms

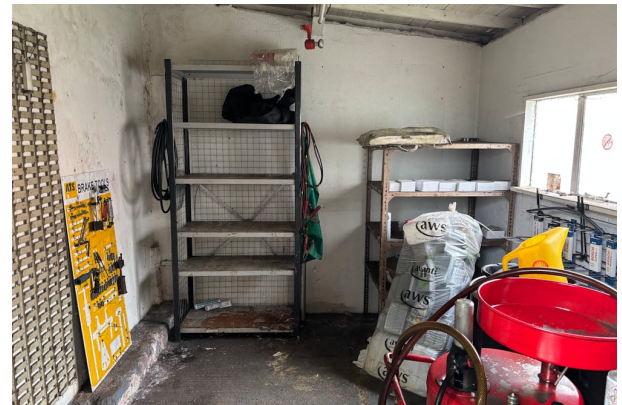
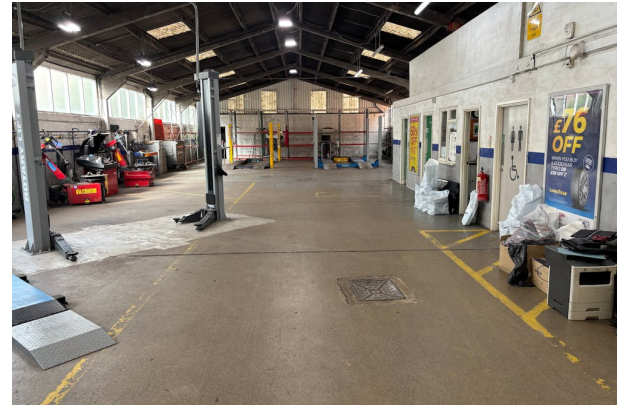
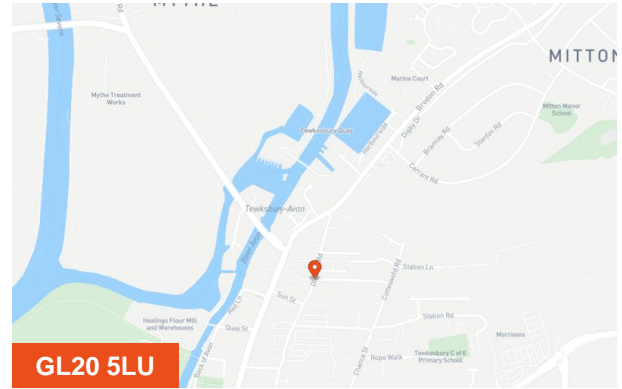
Offers in excess of £270,000 exclusive of VAT.

## Legal Costs

Each party to bear their own legal costs incurred in the transaction.

## Anti Money Laundering

In accordance with the current Anti-Money Laundering (AML) Regulations, the purchaser will be required to provide and satisfy the Vendor and their agents on the source of the funds used to acquire the property in advance of an exchange.



## Viewing & Further Information

**Simon Harvey**

01179 464 520 | 07785 222 868

simon.harvey@htc.uk.com



