



Bon Marche, 16 St. Peters Street, Hereford, HR1 2LE

Bon Marche Town Centre Retail Investment In Hereford

Summary

Tenure	For Sale
Available Size	4,350 sq ft / 404.13 sq m
Price	Offers in excess of £455,000
Business Rates	Upon Enquiry
EPC Rating	Upon enquiry

Key Points

- * Well located freehold shop investment in the heart of Hereford city centre
- * Producing a strong current income of £43,500 per annum
- * Prominent pedestrianised location with excellent footfall close to Hereford Railway Station
- * Let to Bonmarché Properties Ltd until 2030 with the 2026 break option not exercised
- * Substantial 4,350 sq ft (404 sq m) retail unit arranged over ground and first floor
- * Freehold Price of o/o £455,000

Bon Marche, 16 St. Peters Street, Hereford, HR1 2LE

Summary

Available Size	4,350 sq ft
Price	Offers in excess of £455,000
Business Rates	Upon Enquiry
VAT	Applicable. ToGC
Legal Fees	Each party to bear their own costs
EPC Rating	Upon enquiry

Description

16 St. Peters Street comprises a substantial and well-presented retail unit arranged over ground and first floor, extending to approximately 4,350 sq ft (404 sq m). The property occupies a prominent position on the pedestrianised St. Peters Street, one of Hereford's key retail thoroughfares, with strong visibility and footfall.

The building forms part of an attractive mix of traditional and modern retail units in the city centre, surrounded by national and independent occupiers. The unit offers versatile retail accommodation suitable for a variety of high street uses.

Lease Summary

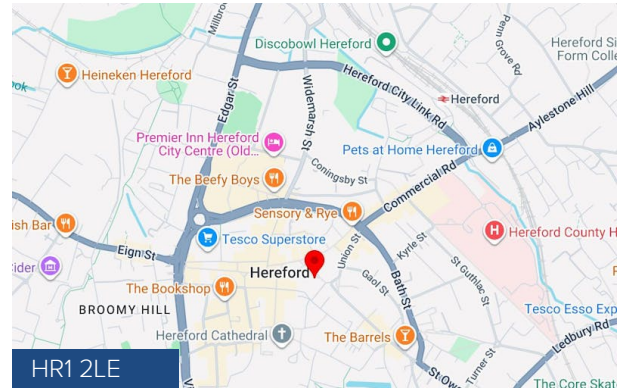
The entire property is let to Bonmarché Properties Ltd on a Full Repairing and Insuring lease expiring in 2030. The current passing rent is £43,500 per annum, with the next rent review scheduled for November 2026. The tenant's break option in November 2026 was not exercised, providing income security until at least the next review date.

This is an attractive, income-producing freehold retail investment let to Bonmarché, a well-established British women's clothing retailer with over 100 stores nationwide and hundreds of employees. The company generates significant annual turnover in the UK fashion sector and continues to trade successfully from this prominent city centre location. The combination of a strong covenant, secure lease term and high yield makes this an appealing addition to any commercial property portfolio.

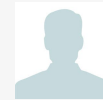
Location

Hereford is a historic and attractive cathedral city located in Herefordshire, approximately 50 miles south-west of Birmingham and 25 miles north-west of Gloucester. It serves as the main commercial and administrative centre for the county, benefiting from a strong local economy supported by retail, tourism, agriculture and professional services.

The city has a population of around 63,000 within the urban area, with a wider catchment extending across Herefordshire and into parts of Worcestershire and Shropshire. Hereford benefits from excellent transport links, including direct rail services to London Paddington (fastest journey approximately 2 hours 51 minutes) from Hereford Railway Station, which is just 750 metres from the property. The A49 provides north-south connectivity, while the A4103 links to Worcester.



Viewing & Further Information



Will Rennie

07581396092 | 0141 237 4324

will@tsapc.co.uk

TSA

Property Consultants

The above information contained within this email is sent subject to contract. These particulars are for general information only and do not constitute any part of an offer or contract. All statements contained therein are made without responsibility on the part of the vendors or lessors and are not to be relied upon as statement or representation of fact. Intending purchasers or lessees must satisfy themselves, by inspection, or otherwise, as to the correctness of each of the statements of dimensions contained in these particulars. Generated on 12/06/2026