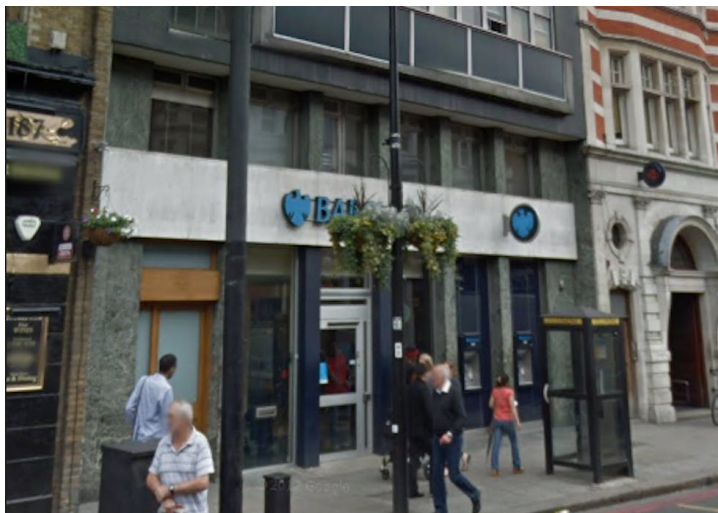


To Let

On instruction of Barclays Plc

191 Earls Court Road, London, SW5 9AW



Summary

Rent	£156,000 per annum
Rates Payable	£54,784 per annum
EPC	EPC exempt - Currently being constructed or undergoing major refurbishment

Key points

- Situated in a prime location

Description

The property comprises of a modern open plan ground floor with basement storage and strong rooms.

Location

The property is located in a 100% prime location along Earls Court Road, directly opposite the tube station entrance. Nearby occupiers include M&S Foodhall, Boots and Burger King.

Accommodation

The accommodation comprises the following areas:

Description	sq ft	sq m
Ground Floor	1,500	139.35
Basement	1,470	136.57
Total	2,970	275.92

Terms

The property is let by way of a lease expiring 2nd May 2027. Available by way of an assignment. A new lease might be available by the landlord. The lease is within the Landlord & Tenant Act 1954.

Legal Costs

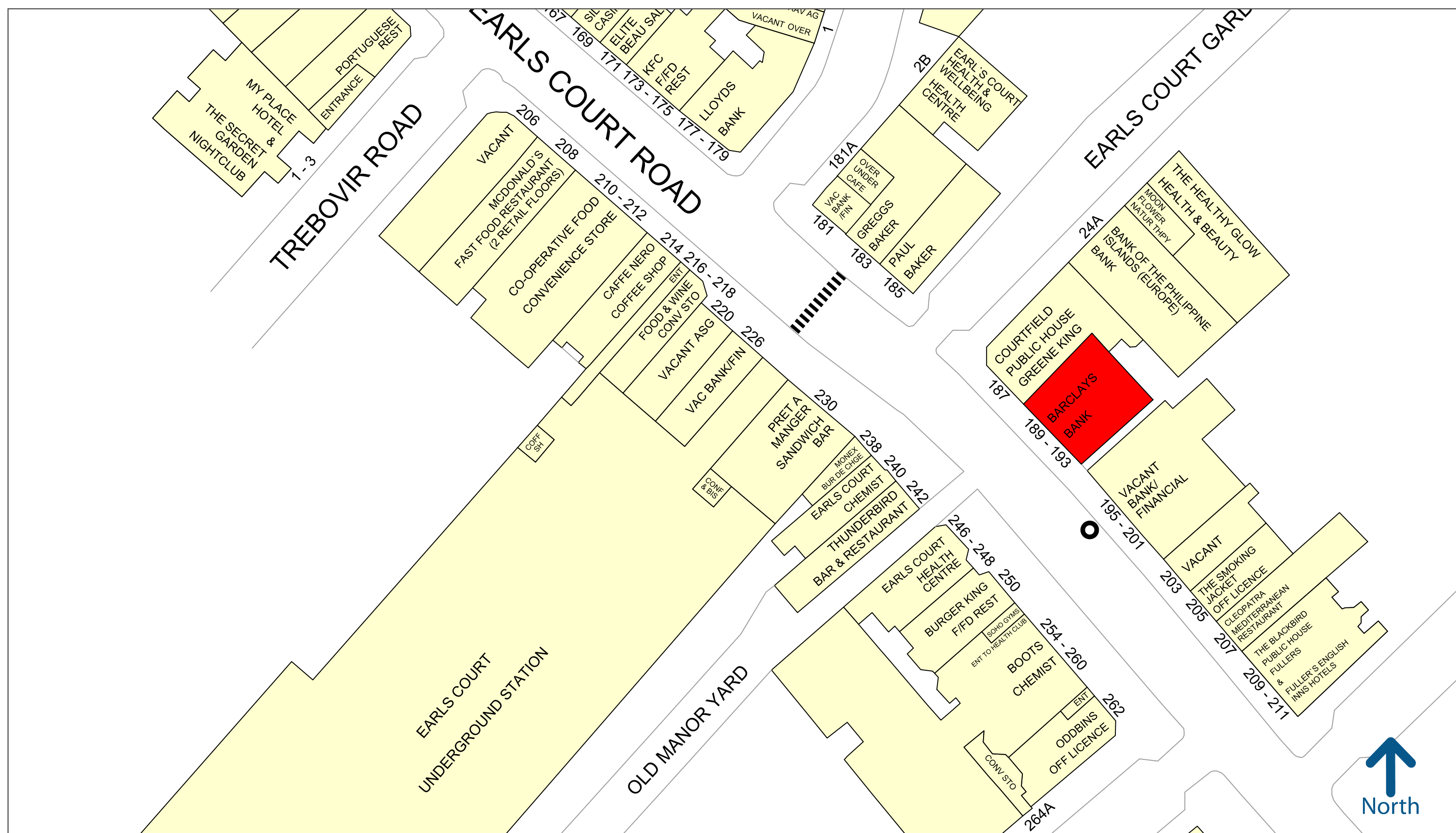
Each party to bear their own associated legal costs.

Roger Kemp

07887 554405
roger.kemp@jll.com

Gabbie Spelman

+44 7707 164917
Gabbie.Spelman@jll.com



25 metres

Experian Goad Plan Created: 20/09/2022
Created By: Jones Lang LaSalle Ltd

For more information on our products and services:

www.experian.co.uk/goad | goad.sales@uk.experian.com | 0845 601 6011



Copyright and confidentiality Experian, 2022. © Crown copyright and database rights 2022. OS 100019885