

Lower Borough of Hackney  
Chatsworth  
Road E5

# 75A Chatsworth Road, Lower Clapton, London, E5 0LH



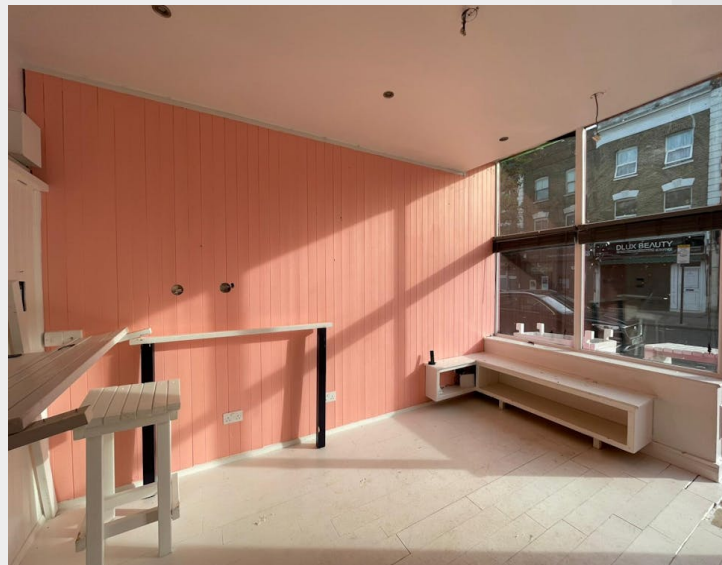
## TO LET

Class E Retail / Leisure

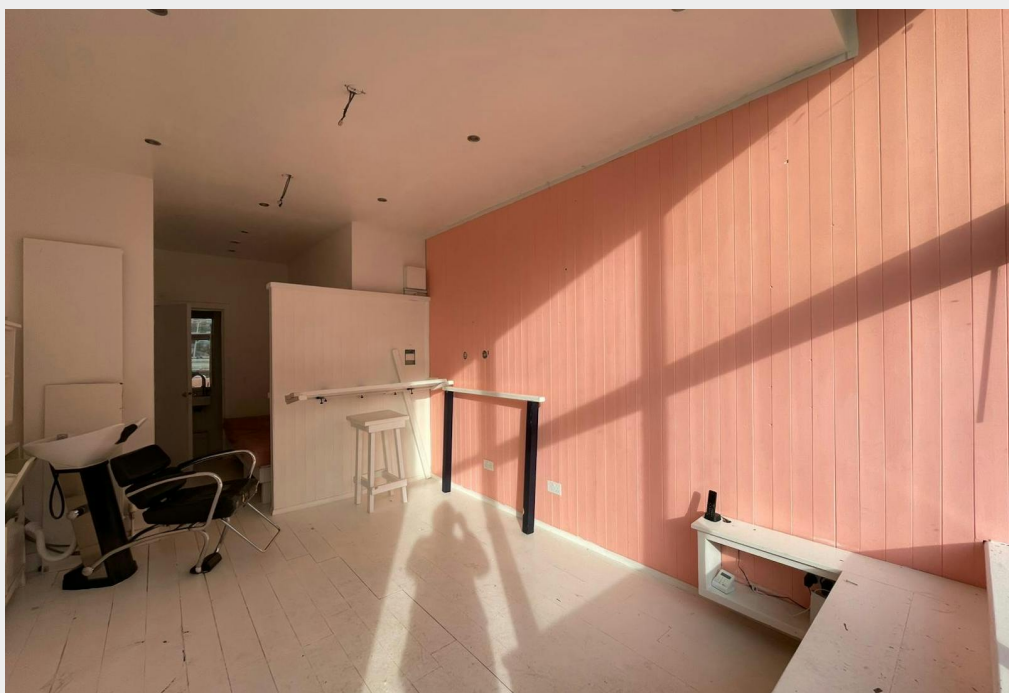
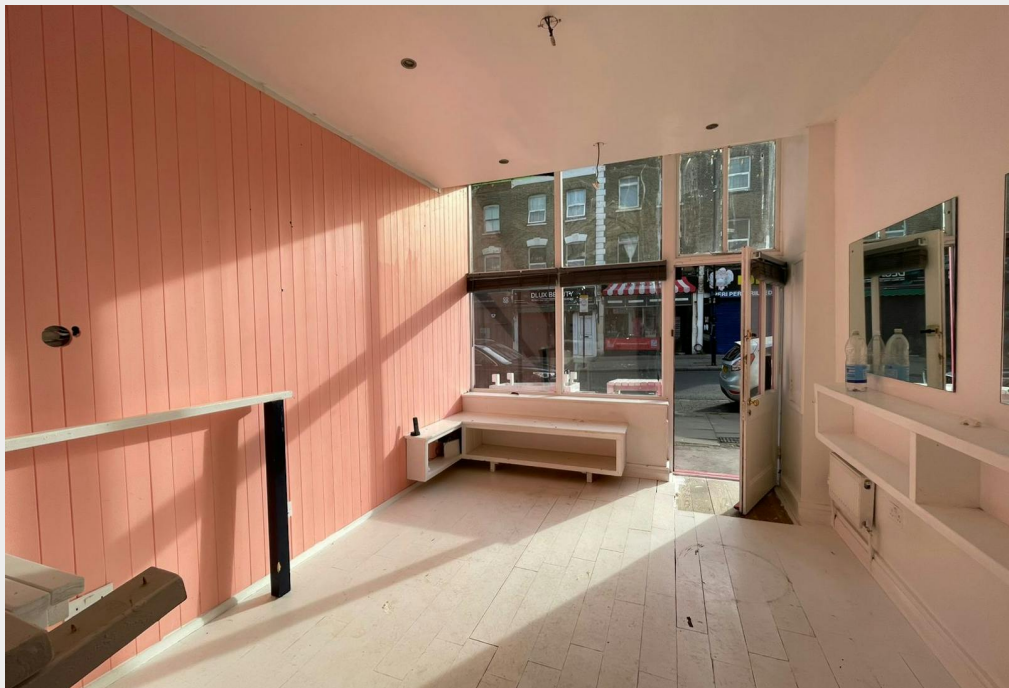
293 sq ft / 27.2 sq m

£15,000 per annum

# Prominent ground floor retail unit, located on the well-established Chatsworth Road



- Densely covered commercial zone, with a mix of independent coffee shops, eateries and bars
- WC and kitchenette facilities
- Open-plan accommodation
- Class E use
- Prominently located on a well-established and popular high street
- Within a 12-minute walk from Homerton Station, providing a direct connection to Stratford International

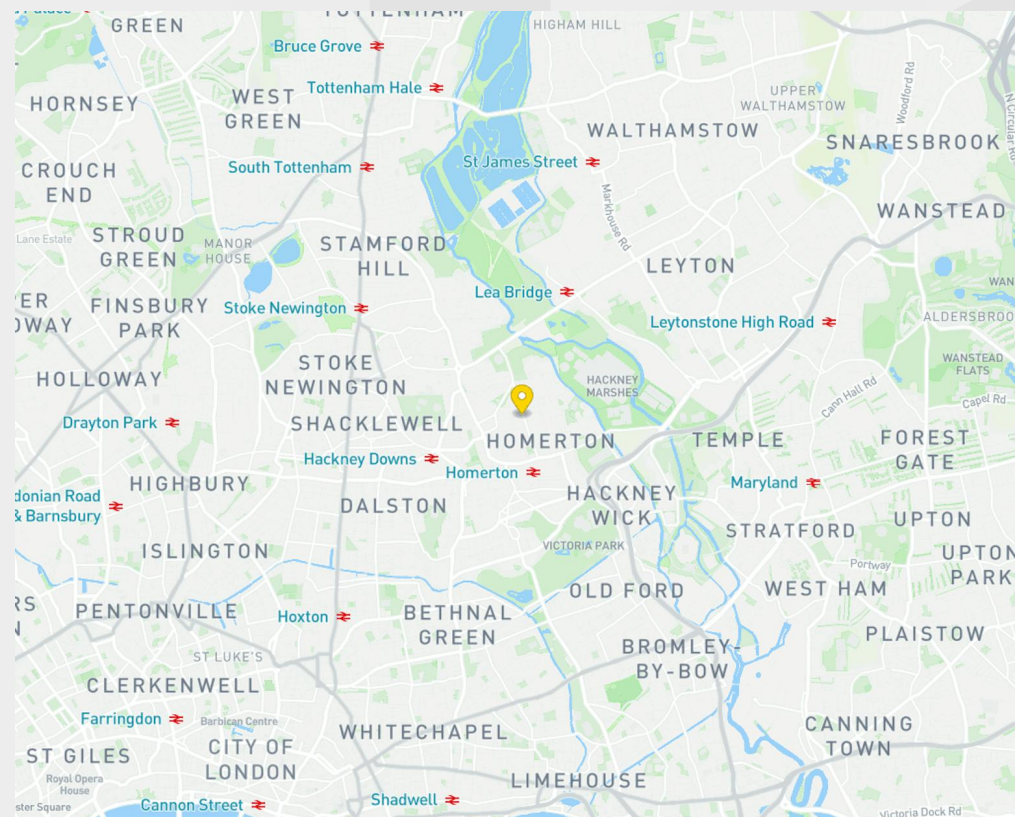


## Description

Ground floor commercial unit occupying a prominent position on Chatsworth Road, providing excellent natural light and visibility and branding potential. Predominantly arranged as open plan, with W/C and kitchenette located to the rear. The unit benefits from modern fixtures and fittings, including durable hard-wearing flooring, and extensive glazed frontage.

## Location

The property occupies a prominent position within the vibrant Chatsworth Road commercial district, known for its range of independent cafés, restaurants, and bars. It benefits from proximity to green open spaces, including Millfields Park and Hackney Marshes. Homerton Overground Station is within walking distance, providing direct access to Stratford International in approximately 25 minutes, with onward connections across London. The property also offers convenient access to major arterial routes, including the A10 and A12.



## Accommodation / Availability

Unit	Sq ft	Sq m	Rates payable	EPC	Availability
Ground	293	27.22	£4,551 /annum	B (40)	Available

### Tenure

New Lease

### EPC

B (40)

### VAT

Not applicable

### Configuration

Upon enquiry

### Contacts

Finlay Milnes  
07791744289  
finlay.milnes@strettons.co.uk

Sean Crowhurst  
07791 849 470  
sean.crowhurst@strettons.co.uk



#### Further Information

[View on Website](#)

Strettons and their clients give notice that: 1. They are not authorised to make or give any representations or warranties in relation to the property either here or elsewhere, either on their own behalf or on behalf of their client or otherwise. They assume no responsibility for any statement that may be made in these particulars. These particulars do not form part of any offer or contract and must not be relied upon as statements or, representations of fact. 2. Any areas, measurements or distances are approximate. The text, photographs and plans are for guidance only and are not necessarily comprehensive. It should not be assumed that the property has all necessary planning, building regulation or other consents and the Agents have not tested any services, equipment or facilities. Purchasers must satisfy themselves by inspection or otherwise. Generated on 05/05/2026