

39 MARCHMONT STREET

BLOOMSBURY, WC1N 1AP

FOREST
REAL ESTATE

HAPPY NAILS
Professional Nails Care For Ladies and Gentlemen
020 7496 4644

HAPPY NAILS
020 3490 4644

TO LET

741 SQ FT

Newly Renovated Retail Premises

Key Features

- Set over ground and basement
- Internal and external access to the basement is provided, allowing for separate access if required
- Minutes from Russell Square station (Piccadilly line)
- Use Class E
- Rear enclosed courtyard
- Located opposite The Brunswick Centre
- Finished to Shell & Core, ready for tenant fit-out
- The ground and basement floors can be leased either separately or as a whole

39 Marchmont Street
Bloomsbury, WC1N 1AP





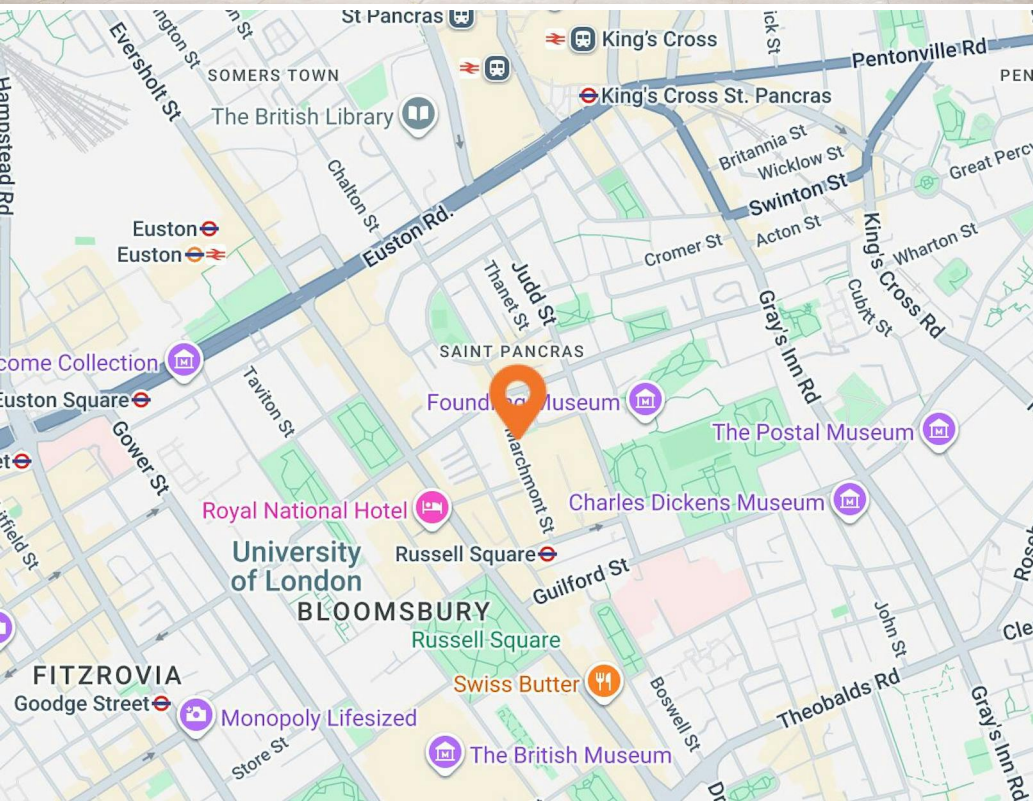
Description

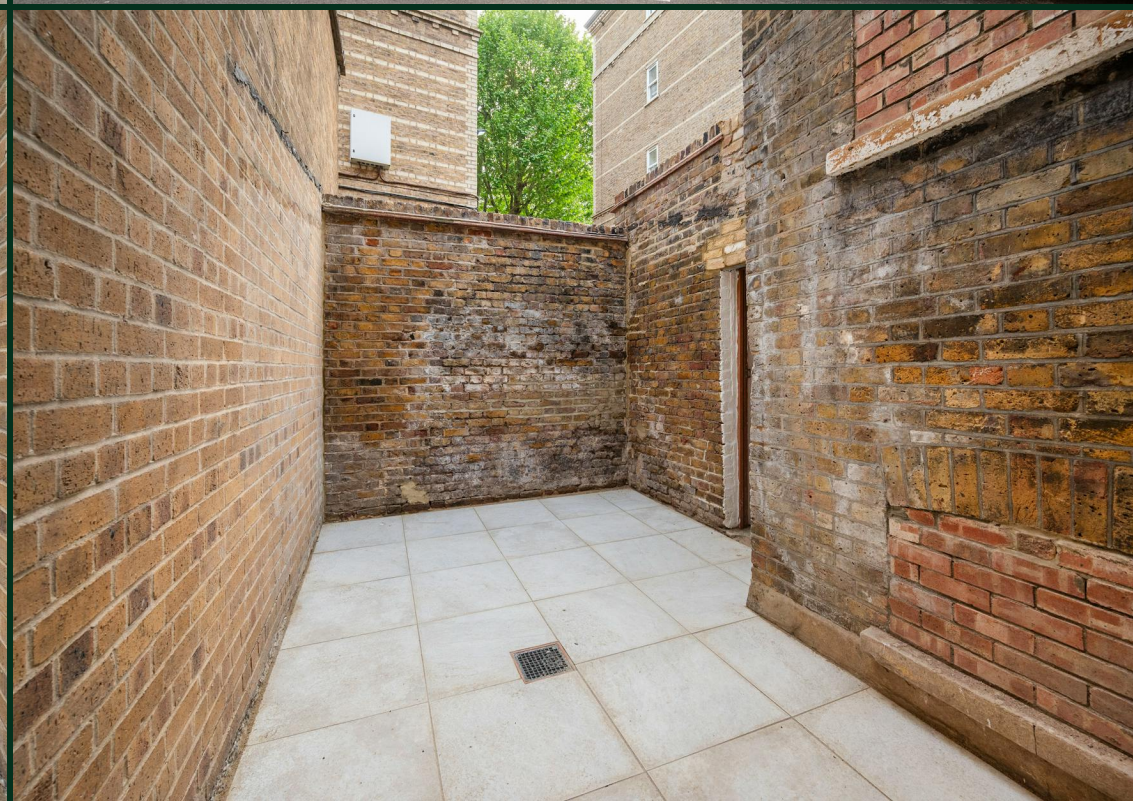
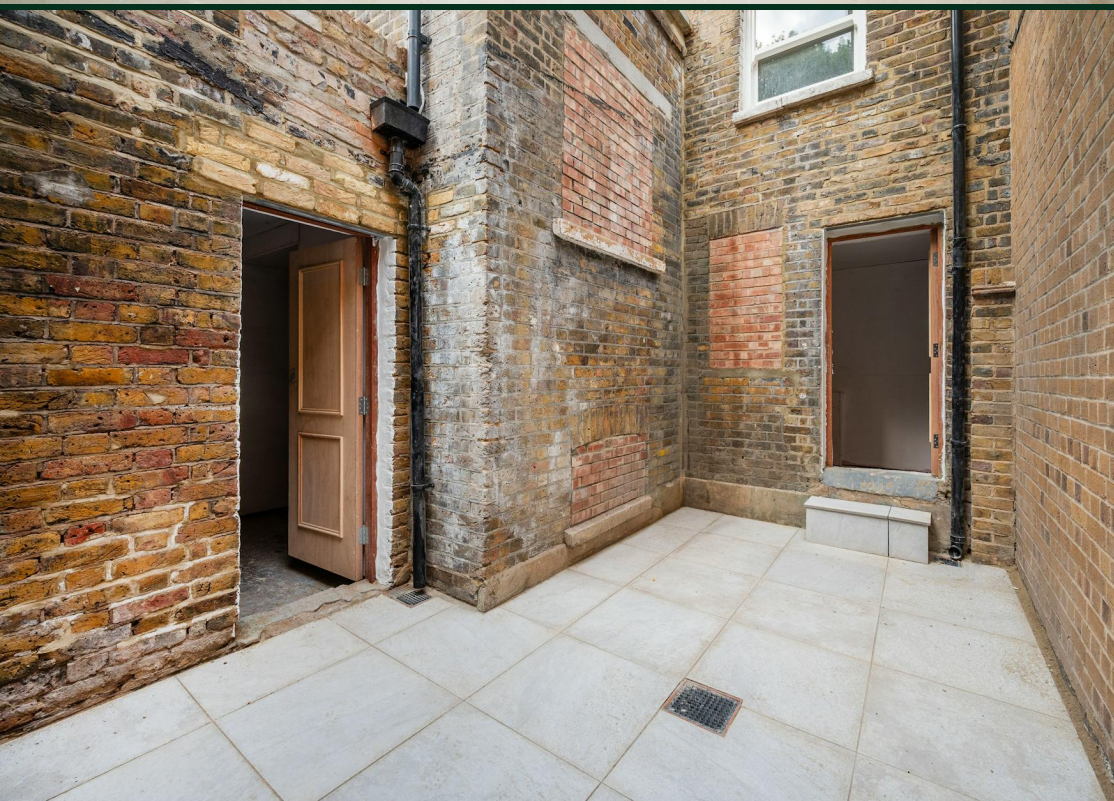
Recently comprehensively refurbished throughout, this attractive Grade II Listed building offers a retail unit arranged across ground floor and basement levels to a Shell & Core specification, providing flexible accommodation suitable for a variety of occupiers. The property further benefits from internal and external access to the basement together with a private enclosed rear courtyard, providing useful ancillary space and excellent natural separation.

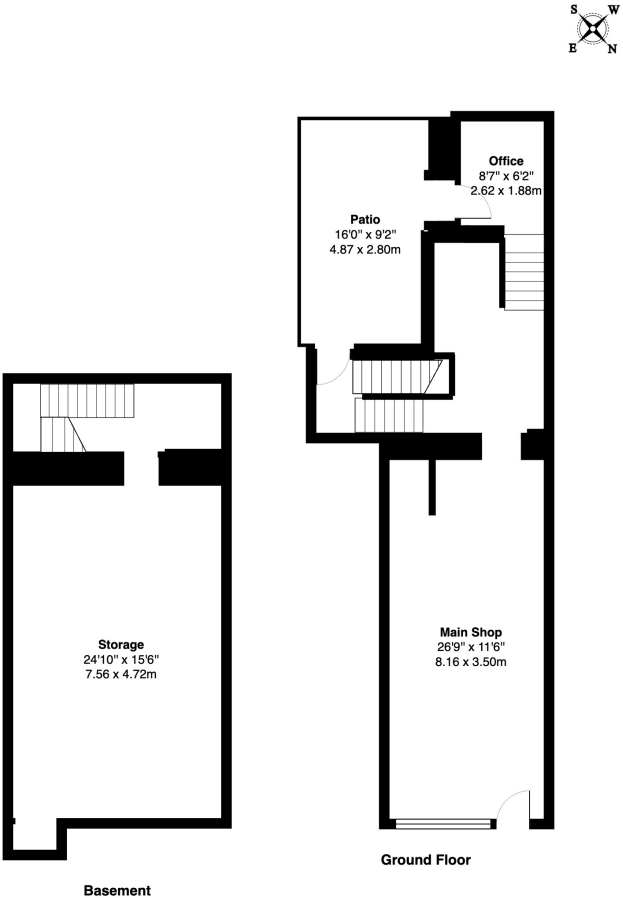
Location

Positioned in the heart of Bloomsbury, Marchmont Street is a vibrant and well-established retail destination renowned for its independent operators, cafés, restaurants and convenience-led occupiers. The street benefits from strong levels of footfall generated by the surrounding dense residential population, nearby offices, hotels and world-renowned academic institutions including University College London and SOAS University of London.

The area is exceptionally well connected, with Russell Square Station, King's Cross St Pancras Station and Euston Station all within easy walking distance, providing access to the London Underground, National Rail and international Eurostar services. Marchmont Street's eclectic mix of retail and leisure operators, combined with its central London location, continues to attract a diverse and affluent customer base throughout the day and evening.







Marchmont Street, WC1N
Total Gross Area: 1034 ft² ... 96.0 m² (excluding patio)
All measurements are approximate and for identification guideline purposes only, not to scale.
Compliant with the RICS code of measuring practice

Availability

The accommodation comprises the following areas:

Name	sq ft	sq m
Basement	375	34.84
Ground	366	34
Total	741	68.84
Lease	New Lease	
Rent	£60,000 per annum	
Rates	£9,072.50 per annum	
Service Charge	N/A	
VAT	Not applicable	
EPC	EPC exempt - Currently being constructed or undergoing major refurbishment	

Contact

Zach Forest

020 3370 4470 | 07890 209 397
zach@forestrealestate.co.uk

Casey Okin

020 3370 4470 | 07391 453 076
casey@forestrealestate.co.uk

London Office Team

55 St John Street, London, EC1M 4AN
020 3370 4470

London Industrial Team

1 Bridge Lane, London, NW11 0EA
020 3355 1555

Hertfordshire Team

Oak House, Reeds Crescent, Watford, WD24 4QP
01923 911 007

www.forestrealestate.co.uk
info@forestrealestate.co.uk

39 Marchmont Street
Bloomsbury, WC1N 1AP

F O R E S T
REAL ESTATE