



## DENMARK STREET, MAIDENHEAD, SL6 7BN

### Summary

Tenure	For Sale
Available Size	3,087 sq ft / 286.79 sq m
Price	£699,995
Business Rates	Upon Enquiry
EPC Rating	D

### Key Points

- Parking
- Arranged over three floors
- Access to town centre and station

## Description

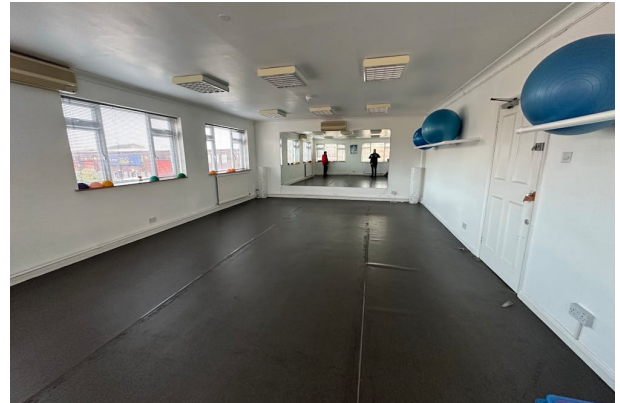
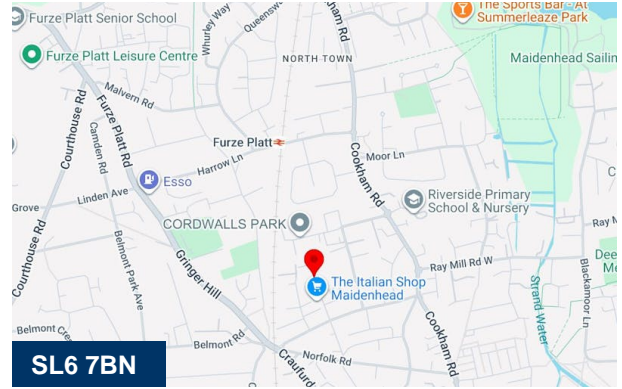
A detached commercial building measuring 3087 sq ft (286.8 sq m) G.I.A with 11-13 car parking spaces suitable for a variety of uses subject to usual consents.

## Location

Approximately 0.3 miles from the town centre and around 0.5 miles from Maidenhead Railway Station, providing easy access to local amenities, the Elizabeth Line, and direct routes into London

## Terms

Available freehold at offers over £699,995 excl



## Viewing & Further Information

Kevin Nee

01753 770124

[kevin.nee@focuscommercial.com](mailto:kevin.nee@focuscommercial.com)

These particulars are for general information purposes only and do not represent an offer of contract. You should not assume that the property has all necessary planning, building regulations or other consents and Focus have not tested any services, facilities or equipment. Any measurements and distances given are approximate only. Purchasers or Tenants must satisfy themselves of all of the aforementioned by inspection and survey. Generated on 16/05/2026