



20 Broad Robin, Gillingham, SP8 4PJ

Self contained retail 2 storey commercial premises to let, ideal for a variety of uses on a popular neighbourhood complex,

Summary

Tenure	To Let
Available Size	1,087 sq ft / 100.99 sq m
Rent	£14,400 per annum
Service Charge	N/A
Rateable Value	£9,100 This is the rateable value for the property. It is not what you pay in business rates or rent. Your local council uses the rateable value to calculate the business rates bill.
EPC Rating	C

Key Points

- Detached commercial property
- Car Parking
- 2 Storey
- On popular neighbourhood complex

20 Broad Robin, Gillingham, SP8 4PJ

Summary

Available Size	1,087 sq ft
Rent	£14,400 per annum
Rateable Value	£9,100 This is the rateable value for the property. It is not what you pay in business rates or rent. Your local council uses the rateable value to calculate the business rates bill.
Service Charge	N/A
VAT	Applicable
Estate Charge	N/A
EPC Rating	C

Description

20 Broad Robin comprises a detached shops of some 1087 sq ft fully fitted as a hairdressers. There are 6 Chairs on the ground floor and 5 Chairs on the first floor.

Location

Located on an established retail/residential neighbourhood parade, Broad Robin, Gillingham.

Accommodation

The accommodation comprises the following areas:

Name	sq ft	sq m	Availability
Building	1,087	100.99	Available
Total	1,087	100.99	



Viewing & Further Information



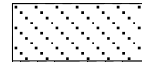
David Foot
01935 415454 | 07825 525055
david.foot@chestersharcourt.com



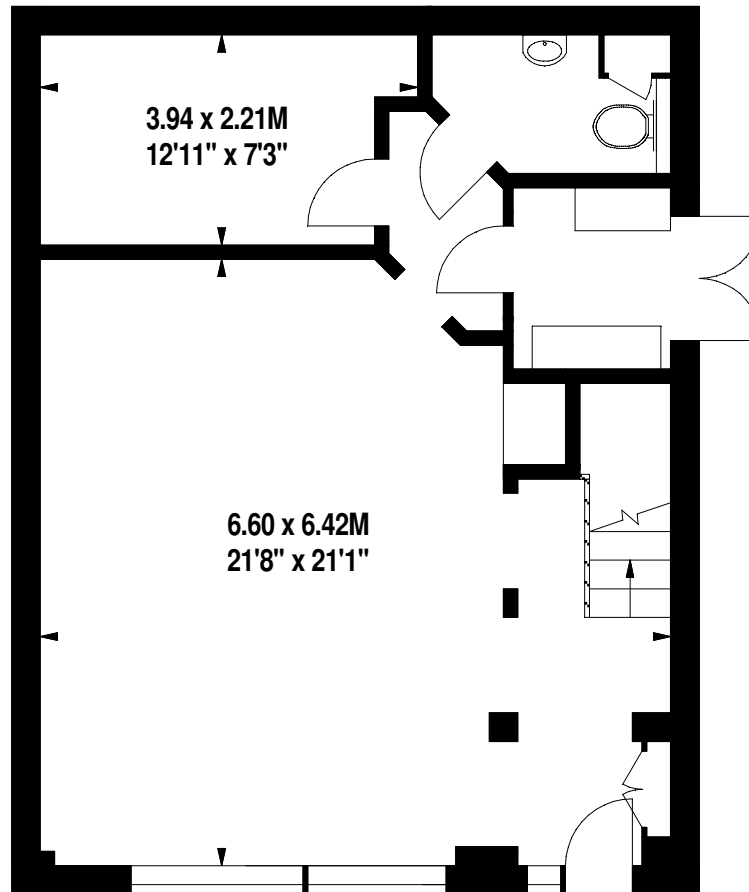
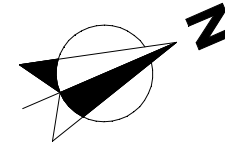
Melissa Mitchell
01935 415454 | 07940 424166
melissa.mitchell@chestersharcourt.com

Utopia Hairdressing, Broad Robin, SP8

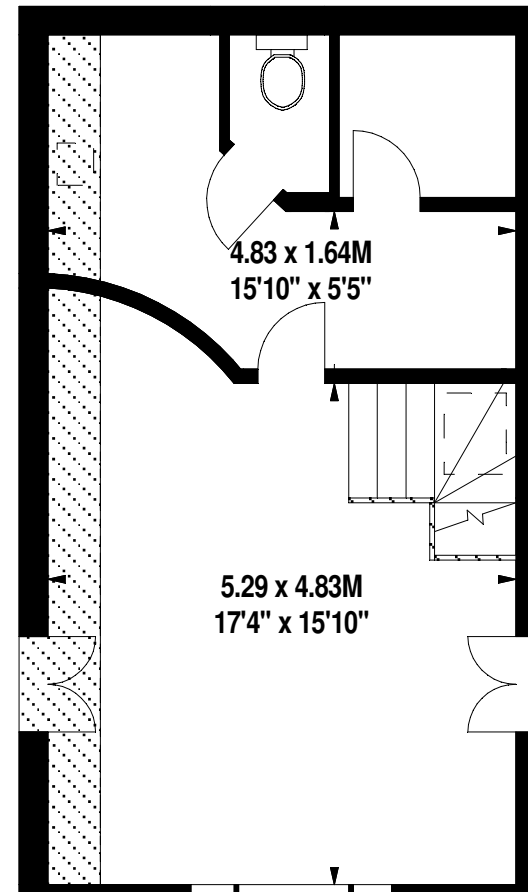
Approximate Gross Internal Area 101 sq m / 1087 sq ft



Under 1.5m head height



Ground Floor



First Floor