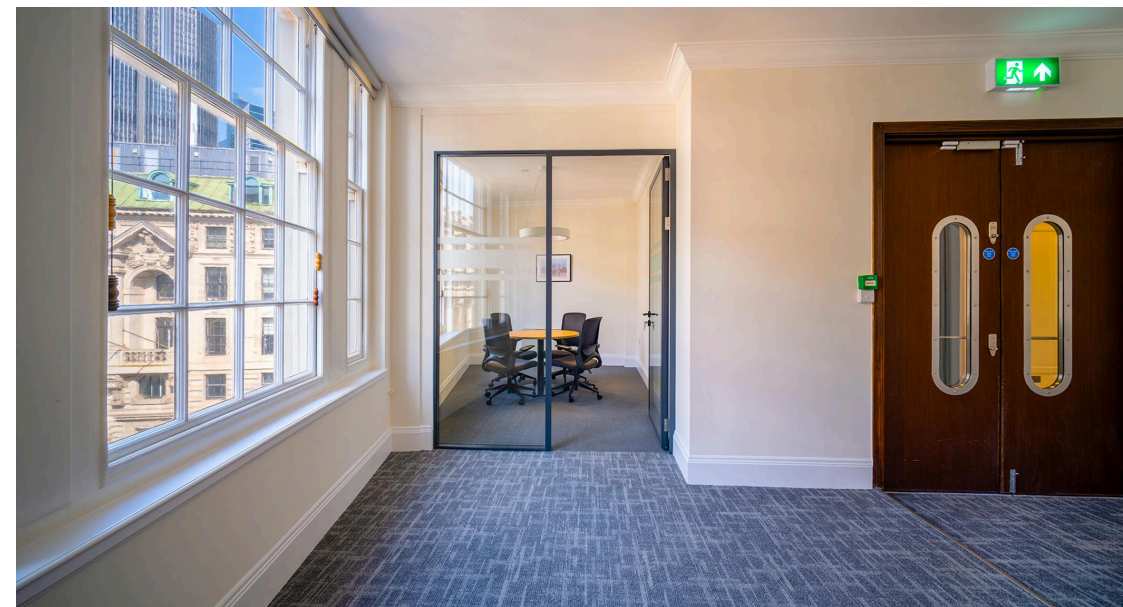
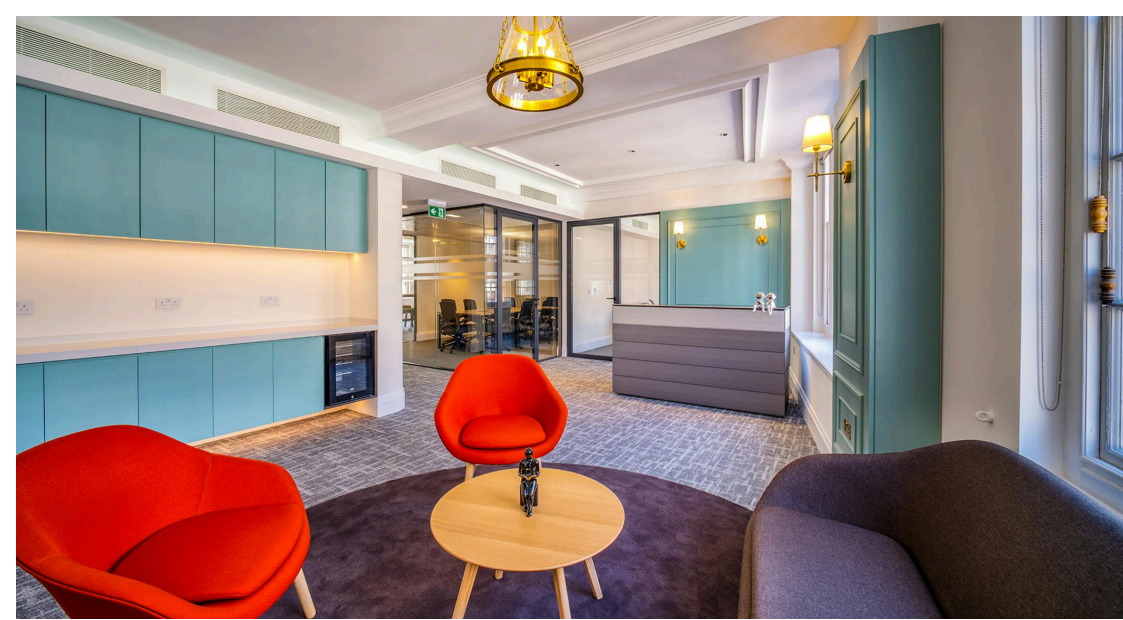




**AVISON  
YOUNG**

29-30 Cornhill, London, EC3V 3NF  
Office To Let | £75 per sq ft | 3,504 to 7,112 sq ft  
Fully Fitted Office Accommodation located next to The Royal Exchange.



## Key Points

- Fully Fitted 3rd floor. Currently arranged as 46 desks, 2 meeting rooms, 2 collaboration spaces, 2 phone booths, a kitchenette/break out area and a reception.

---

- Managed offering by separate arrangement

---

- Grade II listed building

---

- Secure basement storage

---

- Close proximity to Bank station and The Bank of England and next to The Royal Exchange

---

- 24 hour access with biometric reader system

## Description

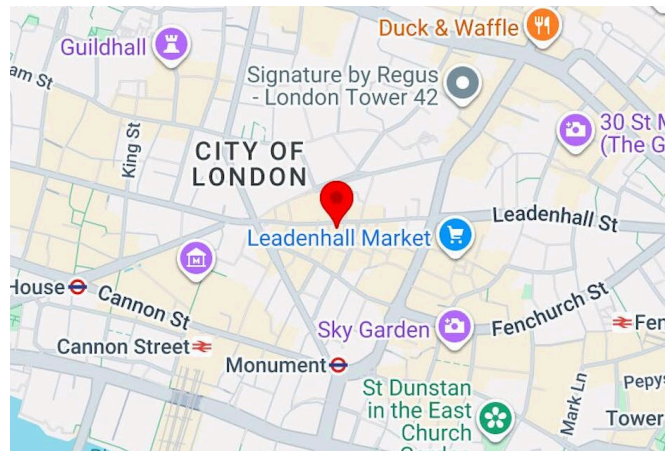
29-30 Cornhill is a Grade II listed building. The building comprises 25,924 sq ft of modern accommodation benefiting from a manned reception.

The 3rd floor is fully fitted and can be offered fully managed too.

The 1st floor is coming soon.

## Location

Located in the heart of the City of London, 29-30 Cornhill is situated moments away from the Bank of England on the southern side of Cornhill, overlooking the Royal Exchange. The property is ideally located to take advantage of the excellent transport links from Bank, Moorgate, Cannon Street, Monument and Liverpool Street stations.



## Accommodation

Name	sq ft	sq m	Availability
3rd - New CAT B	3,608	335.19	Available
1st - Coming soon	3,504	325.53	Available
<b>Total</b>	<b>7,112</b>	<b>660.72</b>	

## Summary

- Rent: £75 per sq ft
- Business rates: £21.37 per sq ft
- Service charge: £18.37 per sq ft
- EPC: D
- Lease: New Lease

## Further information

- [View Microsite](#)

## Contact & Viewings

Steve Lydon  
07879 841840  
steve.lydon@avisonyoung.com



Mia Thompson  
07884 235097  
mia.thompson@avisonyoung.com

