



WAREHOUSE TO LET

Unit 2 The Faraday Centre

Faraday Road, Crawley,
RH10 9PX

WAREHOUSE TO LET

10,592 sq ft

- To be refurbished
- Min eaves 6m, max 7.1m
- First floor offices
- Available August 2026

Unit 2 The Faraday Centre, Faraday Road, Crawley, RH10 9PX

Summary

Available Size	10,592 sq ft
Rent	£17.50 per sq ft pax plus VAT.
Business Rates	To be reassessed on occupation.
Service Charge	£0.59 per sq ft plus VAT for the year to 24.03.2027.
Estate Charge	£0.26 per sq ft Insurance figure plus VAT for the year to 29.09.2026.
EPC Rating	Upon enquiry

Location

Located along Faraday Road, this prominent unit sits in the middle of Manor Royal which is well established as the prime logistics/industrial area of the Gatwick Diamond.

Access to Gatwick Airport is within 1 mile, Junction 10 of the M23 motorway is 2 miles away.

Description

Unit 2 Faraday Centre is an industrial / warehouse building of steel portal frame construction with roof lights. Externally elevations are brick to the front elevation with profiled steel sheeting to the side and rear. The min eaves is 6m, max 7.1m. There are offices are first floor level. Externally there are 23 car parking spaces.

Accommodation

The accommodation comprises the following areas:

Name	sq ft	sq m
Ground - Warehouse	9,424	875.52
1st - Office	1,168	108.51
Total	10,592	984.03

Specification

To be refurbished throughout

Min eaves 6m / max 7.1m

Surface level loading

First floor offices

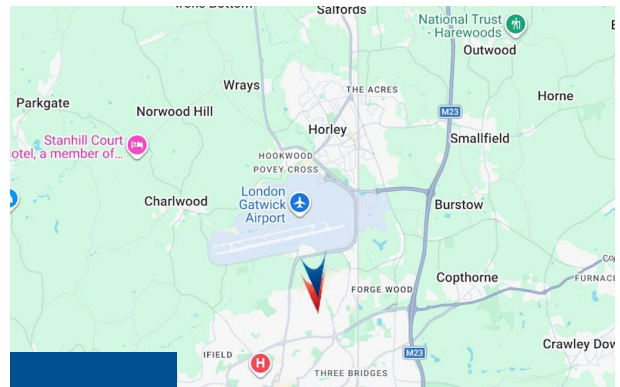
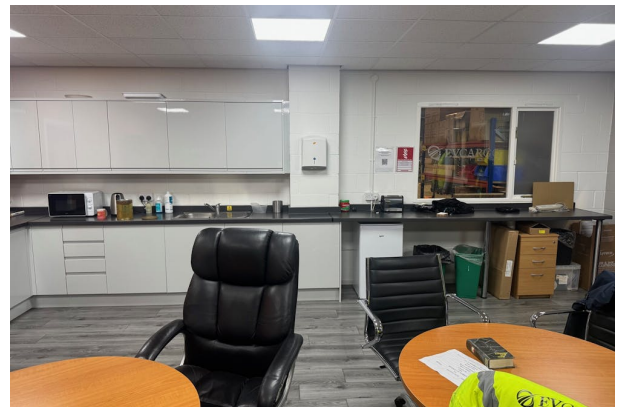
23 car parking spaces

Terms

A new lease is available for a term to be agreed.

Anti Money Laundering

The successful tenant will be required to provide the usual information to satisfy the AML requirements when Heads of Terms are agreed.



Viewing & Further Information

Michael Deacon-Jackson

07939 136 295

mdj@ftdjohns.co.uk

