

Development For Sale
Offers in the region of
£900,000
2,800 sq ft

**Cromwell Road, Earl's Court,
London, SW5 0SD**

**New Instruction - For Sale: Rare
Airspace Development Opportunity
with Full Planning Consent
available in Earls Court, SW5.**

- Rare Airspace Development Opportunity.
 - Full Planning Permission.
 - Two Luxury Penthouses.
 - c.2,800 sq.ft of New Build.
 - Strong Profit Margin anticipated.
 - Central London location.
-



Cromwell Road, Earl's Court, London, SW5 0SD

Summary

- Price: Offers in the region of £900,000

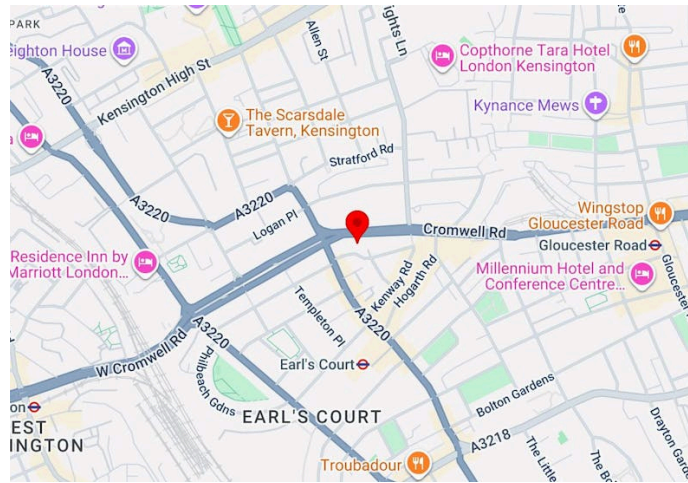
Further information

- [View Microsite](#)

Contact & Viewings

Alex Ogilvie
07414 281406
alex@meridiancp.co.uk

Adam Stackhouse
07889 510036
adam@meridiancp.co.uk



Description

We are delighted to bring this supreme development opportunity in Prime Central London to the open market.

An incredible and inspiring scheme has been designed by the co-Freeholders of Cromwell Mansions Limited which comprises two newly constructed genuine penthouse apartments with lift access. The properties will be positioned magnificently above this striking period mansion building on Cromwell Road. The consented scheme will bring forward two fully independent luxury private homes totalling c. 2,800 sq. ft. which will reveal a pair of extremely well-balanced 3 bedroom apartments with private roof terraces. The vendors will provide all of the necessary licenses to proceed with the development and are seeking a sale in the early part of 2026.

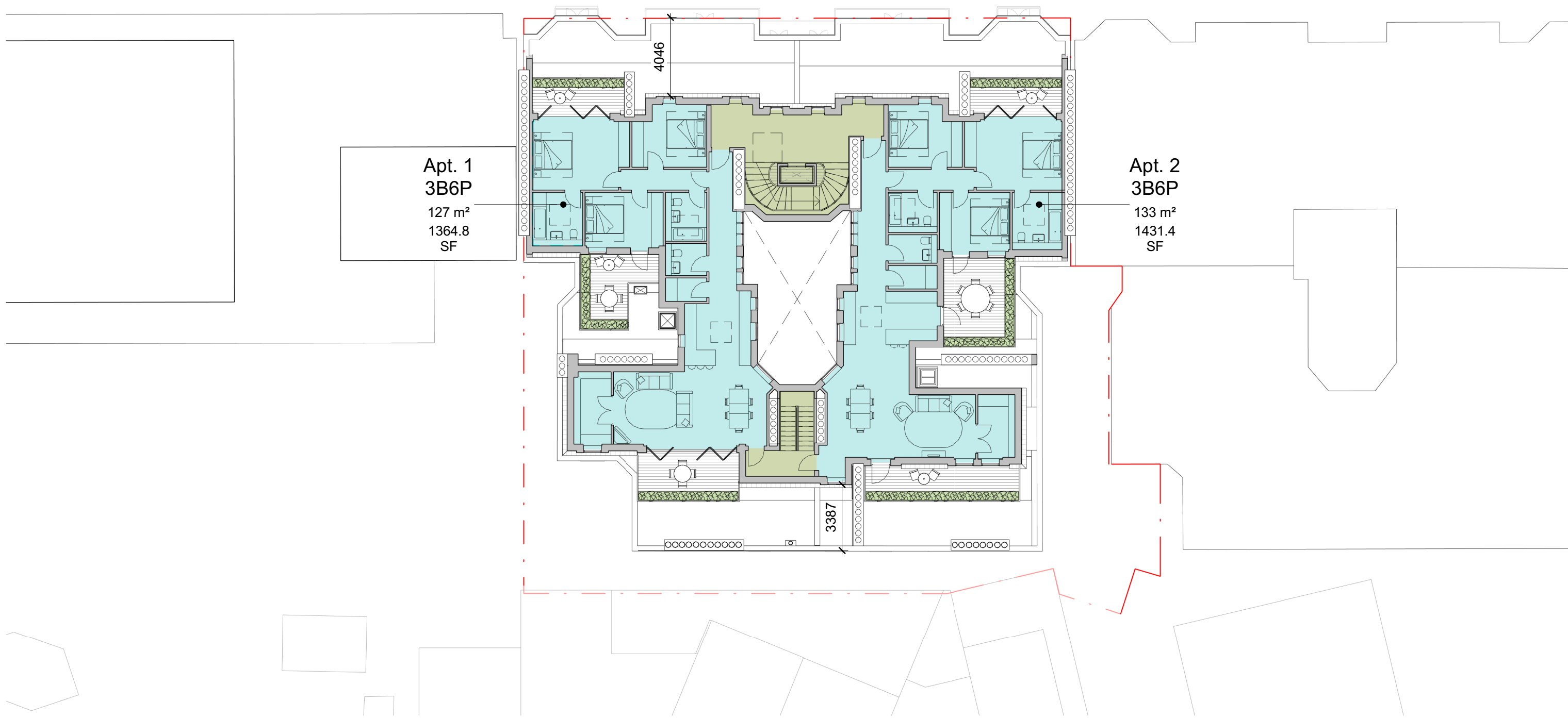
The scheme incorporates a requirement for full refurbishment of the communal areas, a replacement lift within the existing shaft which will extend a further level to the newly created floor.

Please contact Adam Stackhouse for a detailed pack of drawings, basic development appraisal and further information.

Location

Cromwell Mansions occupies a prominent position on Cromwell Road, close to its junction with Earls Court Road, in the heart of SW5. Earls Court Underground Station (District & Piccadilly lines) is just a few minutes' walk away, with Gloucester Road Station also within easy reach, providing fast links across central London and to Heathrow.

The surrounding area offers an excellent mix of cafés, restaurants, shops, and everyday amenities, while the cultural institutions of South Kensington and the open spaces of Hyde Park are easily accessible. The location provides strong connectivity and a vibrant local environment ideal for commercial use.



**Apt. 1
3B6P**
127 m²
1364.8
SF

**Apt. 2
3B6P**
133 m²
1431.4
SF



The copyright of this drawing is vested with Corstorphine + Wright Ltd and must not be copied or reproduced without the consent of the company.

Rev.	Description	Date	Drawn	Chk.

Client
Pasricha

Project
Cromwell Mansions

Drawing Title
Proposed Extension Floor Plan

Drawing Status
Planning

Corstorphine & Wright

London Studio
One Mortimer Street, London, W1T 3JA
020 7842 0820
corstorphine-wright.com

Drawing No. 18420-0301				Revision
Drawn TB	Checked EN	Paper Size A3	Scale 1 : 200	Date 20/04/22