



ESPOKE MEDIA WALLS
& CINEMA ROOMS

01252 364 725

untold

REALITY

Tel: 01252 625162

VIRTUAL REALITY AND MORE...

- VR
- GOLFING
- DARTS
- FOOD AND DRINK
- RACING
- AND MORE...

untold
REALITY

Owen
Isherwood
CHARTERED SURVEYORS

163 Fleet Road, Fleet, GU51 3PD

TO LET | 782 SQ FT (72.65 SQ M)

Location

The unit is situated just off the main retail offering in the town (being along Fleet Road itself), with close-by blue-chip tenants including Sainsbury's, McDonald's and KFC. Fleet town car park is a short walk away.

Fleet is situated in Hampshire, 35 miles Southwest of London. Fleet rail station offers direct services to London Waterloo. Fleet is located less than 3 miles from junction 4a of the M3.

Description

A modern-built unit with a large window frontage and ample signage out on to Fleet Road. Internally the premises are square in shape, with scope for additional space.

The unit has residential premises above which may restrict uses within as well as trading hours. Appropriate enquiries with the local authority would be advised.

Accommodation

Name	sq ft	sq m	Availability
Ground	782	72.65	Available
Total	782	72.65	

Rent

£17,250 per annum

Rates & Charges

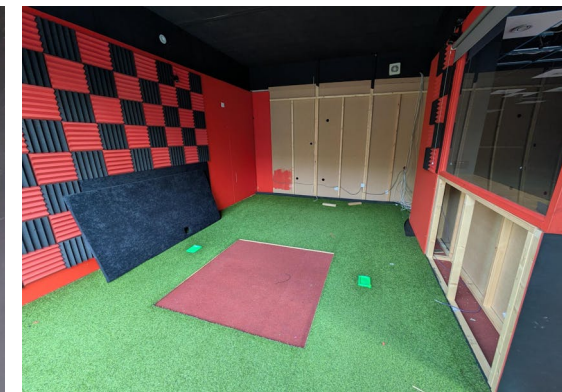
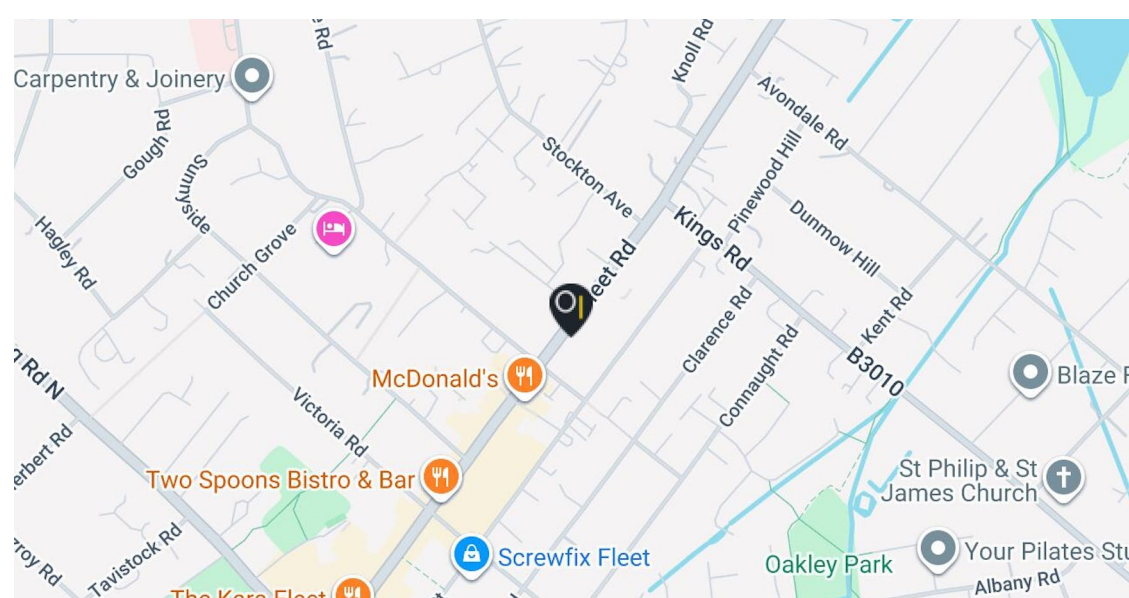
To be assessed.

EPC

To be assessed.

Legal costs

Each party to bear their own legal costs incurred in the transaction.



Contact

Kieran Morgan

T: 01483 300176

M: 07904377405

E: Kieran@owenisherwood.com

owenisherwood.com | 01483 300 176

1 Wey Court, Mary Road, Guildford, Surrey GU1 4QU

These particulars do not constitute, or form any part of, any offer or contract, and whilst all the information given is believed to be correct, all interested parties must satisfy themselves of its accuracy. All prices and rents are quoted exclusive of VAT, unless otherwise stated