

The Bond

180, 182 Fazeley St, Birmingham, B5 5SE

SHEPHERD
COMMERCIAL



TO LET

1 TO 60 DESKS

£350 PER MONTH

Premium full-floor co-working space with dedicated desks in Digbeth's landmark Bond building.

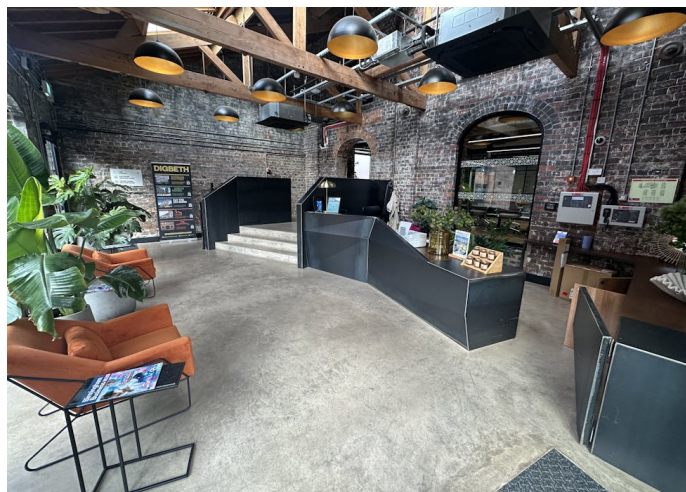
- 60 dedicated desks with 24/7 secure access
- Fully managed workspace with high-speed connectivity
- Breakout areas, meeting rooms and communal kitchen
- Characterful heritage building in the heart of Digbeth
- Flexible memberships ideal for creatives and growing teams

01564 778890
www.shepcom.com

The Bond

180, 182 Fazeley St, Birmingham, B5 5SE

SHEPHERD
COMMERCIAL



Summary

Available Size	1 to 60 Desks
Rent	£350 per month
Service Charge	N/A
Car Parking	N/A
Estate Charge	N/A
EPC	B (50)

Description

The Bond Co-Working offers a high-quality, full-floor workspace designed for modern businesses seeking flexibility, creativity and convenience. Set within one of Digbeth's most characterful heritage buildings, the space provides 175 dedicated desks available on simple monthly terms. Members benefit from 24/7 secure access, high-speed connectivity, breakout areas, bookable meeting rooms and a fully managed environment supported by an on-site team. The layout balances open-plan working with informal collaboration zones, giving individuals and teams the freedom to work in a way that suits them. Industrial architecture, exposed features and excellent natural light create an inspiring setting for freelancers, start-ups and scaling companies. As part of the wider Digbeth Estate, members join a vibrant community of creative and digital businesses, with local amenities, cafés and venues all on the doorstep. The Bond Co-Working provides the ideal base for organisations seeking a professional, flexible and design-led workspace in the heart of Birmingham's most exciting creative district.

Location

The Bond is located on Fazeley Street in the centre of Digbeth, one of Birmingham's most vibrant and rapidly evolving creative quarters. The area is home to a growing community of digital, media and design businesses, alongside independent cafés, bars, studios and cultural venues. Fazeley Street benefits from excellent connectivity, positioned within easy walking distance of Birmingham City Centre and the Bullring, as well as major transport links. The site is particularly well placed for the forthcoming HS2 Curzon Street Station, which will further enhance accessibility to London and the wider UK. The surrounding streets form part of a historic industrial district undergoing significant investment, creating a unique blend of heritage architecture and contemporary development. This dynamic environment makes Digbeth an attractive destination for businesses seeking a central, creative and well-connected base in Birmingham.

Viewings

Strictly by appointment only.

License Terms

The workspace is offered on a 30-day rolling licence, providing maximum flexibility for occupiers. The licence fee is £350 per dedicated desk per month, inclusive of all utilities and building services, with a refundable deposit equivalent to one month's licence fee payable on commencement.



Kaine Arkinson

01564 778 890 | 07487 521802
kaine@shepcom.com



Charlie Boswell

01564 778 890 | 07913 142038
charlie@shepcom.com

