

## 58 Waterloo Street

58 Waterloo Street  
Glasgow G2 7DA



---

Prime Glasgow office with light-filled, efficient floors, corner frontage, close to Central Station amenities.

---

**Type** To Let

**Size** 1,628 to 11,446 sq ft

**Rent** Rent on application

---

[mc2-offices.com](http://mc2-offices.com)

---

0141 266 0717

# Description

The building provides 34,000 sq ft of Grade A office space over eight floors with parking for eight cars.

The bright, efficient floor plates extend to approximately 3,856 sq ft and benefit from excellent natural daylight due to the building's highly prominent corner position. Suites available from 1,166 sq ft.



# MC<sup>2</sup>

## 58 Waterloo Street

58 Waterloo Street  
Glasgow G2 7DA

Prime Glasgow office with light-filled, efficient floors, corner frontage, close to Central Station amenities.

**Type** To Let

**Size** 1,628 to 11,446 sq ft

**Rent** Rent on application

[mc2-offices.com](http://mc2-offices.com)

0141 266 0717

# Specification

- Prime location close to Glasgow Central station
- Spacious entrance with commissionaire
- 2 x 10 person passenger lifts
- Suites ranging from 1,166 sq ft to 3,837 sq ft
- Air-conditioning
- Metal suspended ceilings with LED lighting
- Raised access floors
- High quality male, female & disabled toilets on each floor
- Secure bicycle storage, changing rooms, lockers and shower facilities
- Communal golf simulator lounge at basement level



# MC<sup>2</sup>

## 58 Waterloo Street

58 Waterloo Street  
Glasgow G2 7DA

---

Prime Glasgow office with light-filled, efficient floors, corner frontage, close to Central Station amenities.

---

**Type** To Let

**Size** 1,628 to 11,446 sq ft

**Rent** Rent on application

---

[mc2-offices.com](http://mc2-offices.com)

---

0141 266 0717

# Accommodation

Name	sq ft	Availability
5th - Suite B	2,414	Available
4th - Suite A	1,579	Available
4th - Suite B	1,993	Available
2nd	3,832	Available
1st - Suite A	1,628	Available
<b>Total</b>	<b>11,446</b>	

# MC<sup>2</sup>

## 58 Waterloo Street

58 Waterloo Street  
Glasgow G2 7DA

---

Prime Glasgow office with light-filled, efficient floors, corner frontage, close to Central Station amenities.

---

**Type** To Let

**Size** 1,628 to 11,446 sq ft

**Rent** Rent on application

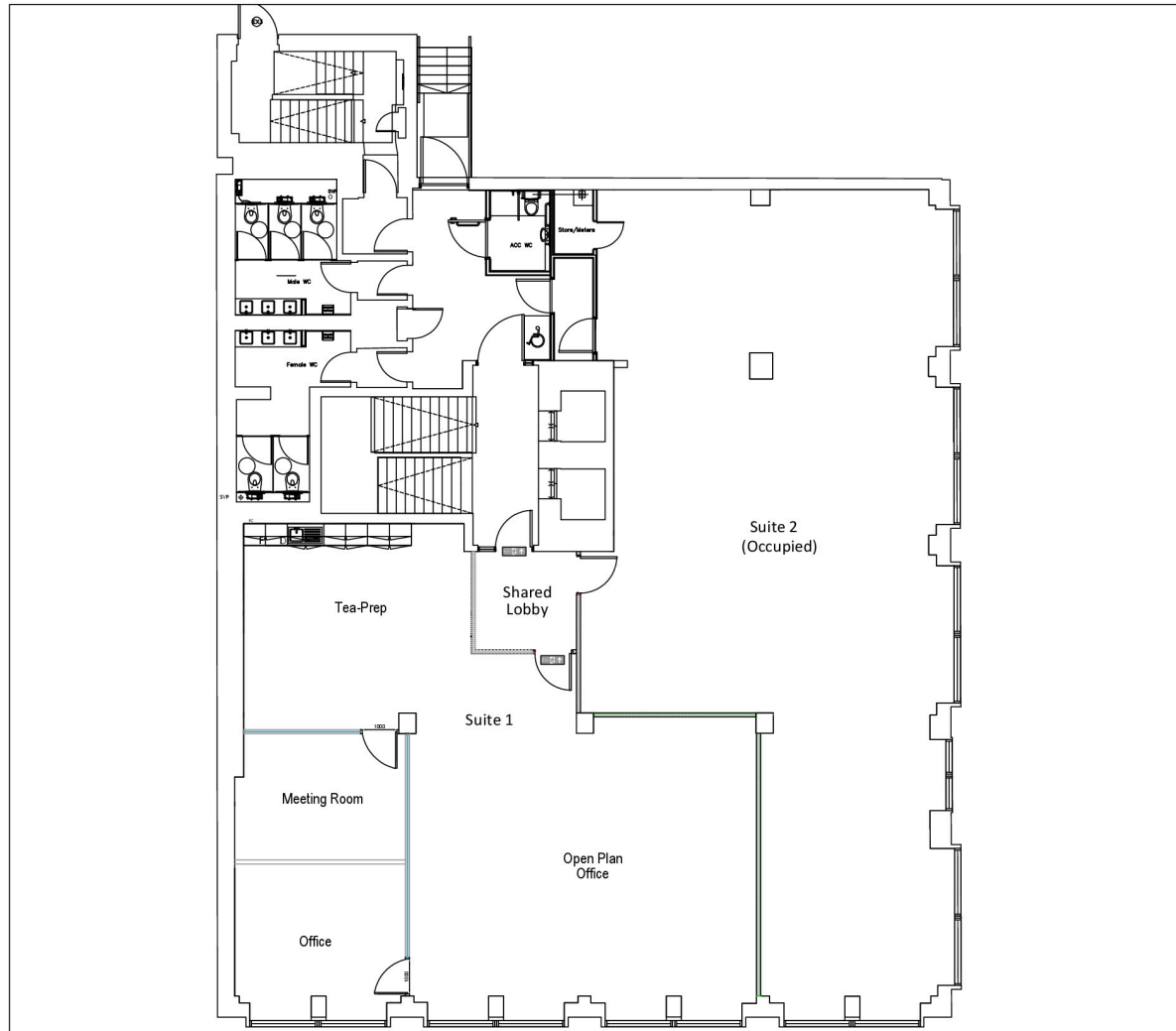
---

[mc2-offices.com](http://mc2-offices.com)

---

0141 266 0717

# Floor Plan



## NOTES

This drawing is copyright protected and remains the property of PMP Ltd.

All levels and dimensions to be checked on site prior to construction / fabrication, report discrepancies immediately to the Architect.

Do not scale dimensions from the drawings.  
Use only figured dimensions.

### Additional Notes

The building operates under a shared management regime.

**pmp** building surveying  
project management  
commercial interiors

115 GEORGE STREET EDINBURGH EH2 4JN  
T 0131 226 7100 F 0131 226 5284  
226 ST VINCENT STREET GLASGOW G2 5QY  
T 0141 229 7575 F 0141 229 7576  
reception@pmpplc.co.uk www.pmpplc.co.uk

Project:  
58 Waterloo Street (1st Floor)

Client:  
G2 7DA

Contract:  
Construction Partnership

Drawing:  
Floor Plan

Drawing Status:  
Final

Scale	Date	Drawn	Checked
1:100 / A3	Nov'21	AB	LM
Job No.	Element	Number	Revision
01403		01	

# MC<sup>2</sup>

## 58 Waterloo Street

58 Waterloo Street  
Glasgow G2 7DA

Prime Glasgow office with  
light-filled, efficient floors,  
corner frontage, close to  
Central Station amenities.

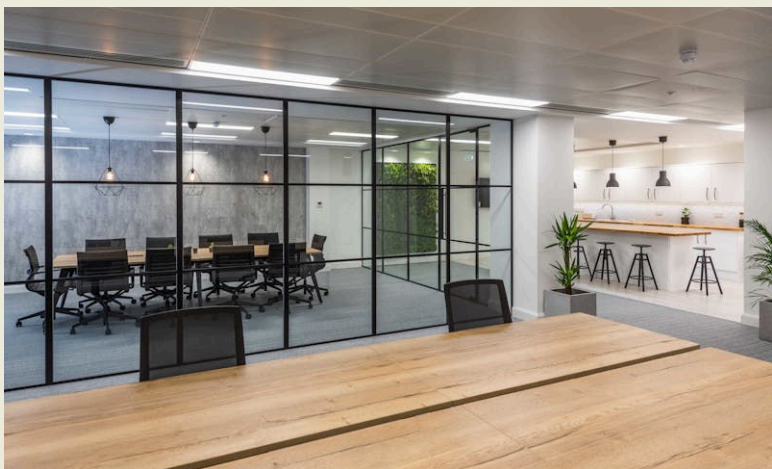
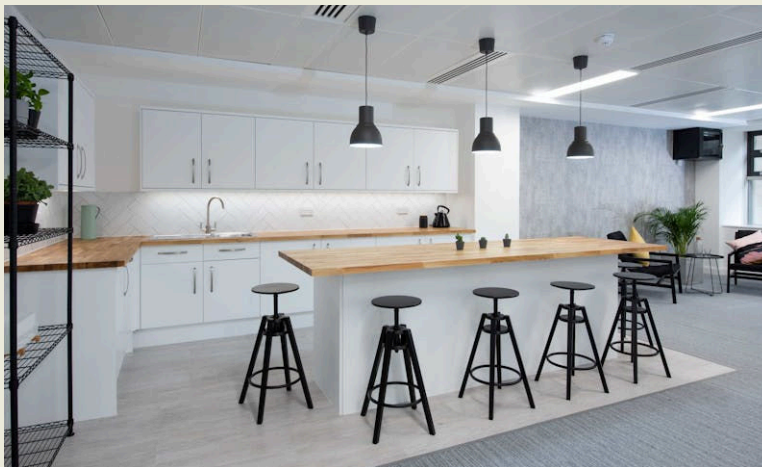
Type To Let

Size 1,628 to 11,446 sq ft

Rent Rent on application

[mc2-offices.com](http://mc2-offices.com)

0141 266 0717



# MC<sup>2</sup>

## 58 Waterloo Street

58 Waterloo Street  
Glasgow G2 7DA

---

Prime Glasgow office with light-filled, efficient floors, corner frontage, close to Central Station amenities.

---

Type To Let

Size 1,628 to 11,446 sq ft

Rent Rent on application

---

[mc2-offices.com](http://mc2-offices.com)

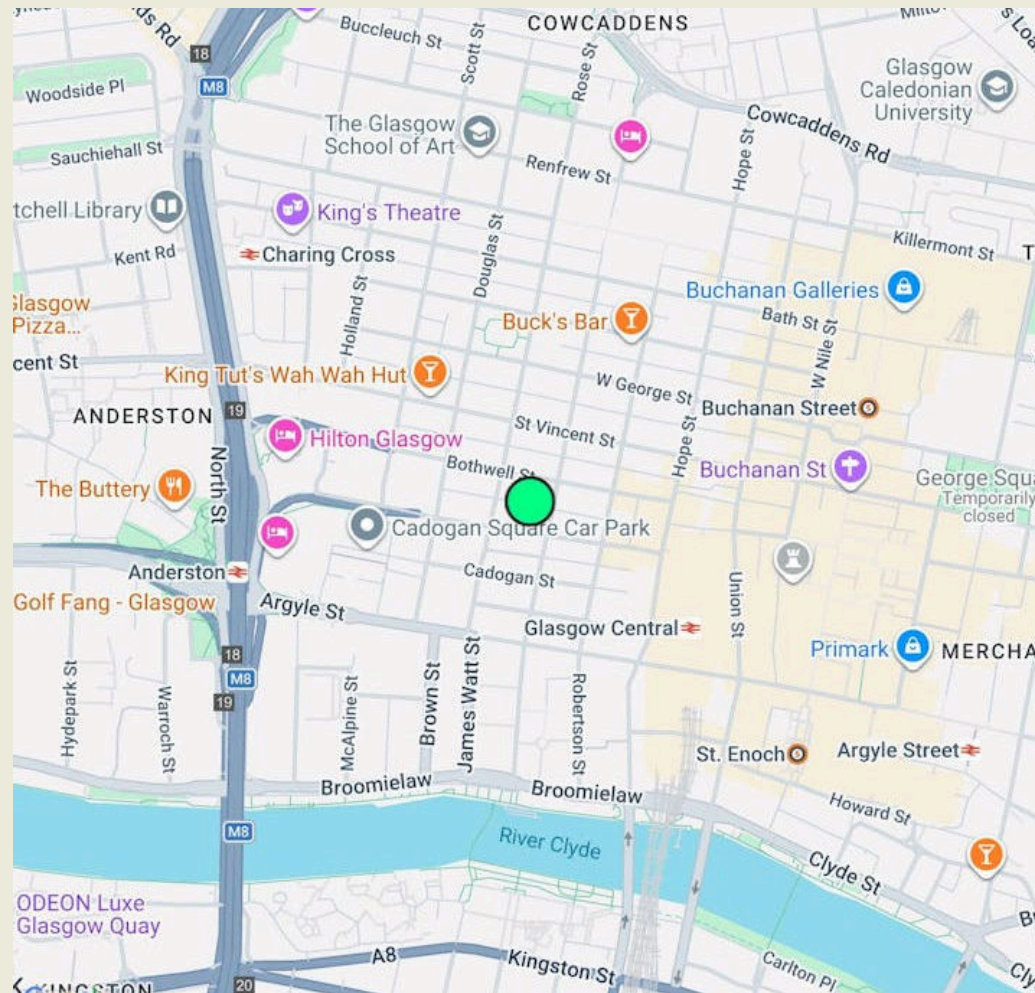
---

0141 266 0717

# Location

58 Waterloo Street is situated in the heart of Glasgow's Central Business District (CBD), immediately adjacent to Bothwell Street, with nearby occupiers including Morgan Stanley, Jacobs, AJ Gallagher, Scotrail and SSE.

The building is extremely well located with Glasgow Central Railway Station being within a 3 minute walk and several bus routes passing along Waterloo Street, as well as several core retail and leisure amenities nearby.



# MC<sup>2</sup>

## 58 Waterloo Street

58 Waterloo Street  
Glasgow G2 7DA

Prime Glasgow office with light-filled, efficient floors, corner frontage, close to Central Station amenities.

Type To Let

Size 1,628 to 11,446 sq ft

Rent Rent on application

[mc2-offices.com](http://mc2-offices.com)

0141 266 0717

The logo for MC2, featuring the letters 'MC' in a bold, black, sans-serif font, with a superscripted '2' to the right.

---

We are an independent real estate agency, with expert local knowledge of Scotland's cities and towns. We ensure our clients, whether landlord or tenant, vendor or purchaser, receive the best advice. Offices are at the heart of what we do and it's been our passion since 1995.



Member of [corfac.com](https://www.corfac.com)

MC2 gives notice that these particulars are set out as a general outline only for the guidance of intending Purchasers or Lessees and do not constitute any part of an offer or missives. Details are given without any responsibility and any intending Purchasers, Lessees or Third Party should not rely on them as statements or representations of fact, but must satisfy themselves by inspection or otherwise as to the correctness of each of them. No person employed or engaged by MC2 has any authority to make any representation or warranty whatsoever in relation to this property. MC2 is the licensed trading name of MC2 (Glasgow) Ltd. Company registered in Scotland no SC704375. Registered office: 9 Royal Crescent, Glasgow G3 7SP. Generated on April 2026

---

**Andy Cunningham**

Founder

[andy@mc2-offices.com](mailto:andy@mc2-offices.com)

07793 808 490

**Colin Mackenzie**

Founder

[colin@mc2-offices.com](mailto:colin@mc2-offices.com)

07912 805 890

---

**[mc2-offices.com](https://www.mc2-offices.com)**

---

**0141 266 0717**