



Unit 9a Britannia Estate, Leagrave Road, Luton, LU3 1RJ

Industrial/Warehouse Unit

Summary

Tenure	To Let
Available Size	4,842 sq ft / 449.84 sq m
Rent	£36,315 per annum (commencement rent)
EPC Rating	Upon enquiry

Key Points

- Established Industrial Estate
- On-Site Security
- Rent Incentives Available
- Arterial Route Proximity
- Available Straight Away

Unit 9a Britannia Estate, Leagrave Road, Luton, LU3 1RJ

Location

The Britannia Estate is located in the Bury Park suburb of Luton, off Leagrave Road. Luton town centre and the mainline train station are approximately 1.4 miles to the southeast, with London Luton Airport slightly further afield. The estate offers exceptional connectivity via Luton's arterial routes including the A505, A6 and M1 (J11) which is approximately 2 miles to the west.

Description

The Britannia Estate is an established industrial estate comprising 60+ units across a total area of nearly 230,000 sqft. On site facilities include secure gated access, communal loading bay, CCTV recording, communal WC facilities and carparking. The estate is home to a mixture of local, regional and national businesses.

Unit 9a comprises 4,842 sqft. The unit has undergone refurbishment and benefits from a loading door, WC facilities, office space and forecourt parking.

Terms

The premises are available upon a new Full Repairing & Insuring lease for a 3-year term.

Year 1 = £36,315 exclusive.

Year 2 = £39,947 exclusive.

Year 3 = £43,578 exclusive.

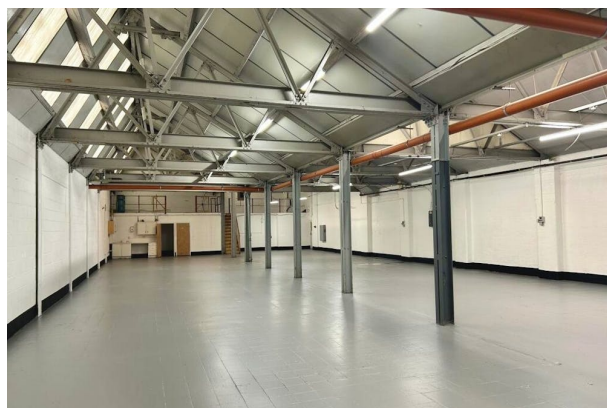
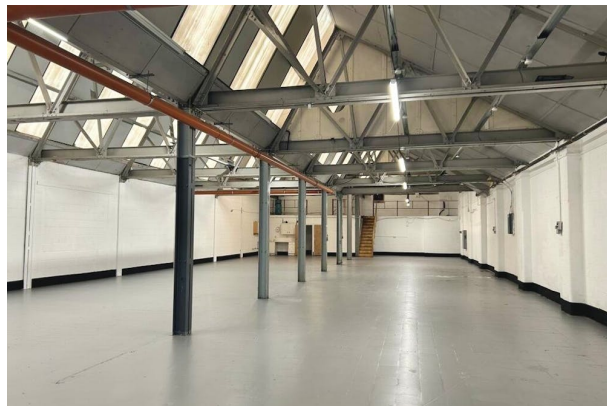
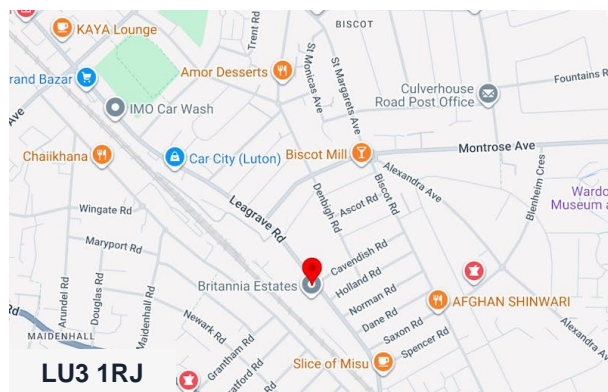
All units are subject to an estate service charge and building insurance contribution. Please enquire for further information on costings.

Rateable Value

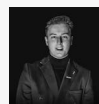
The rateable value as of April 2026 is £31,250 (please note this is not rates payable).

VAT

All costs are subject to VAT at the appropriate rate.



Viewing & Further Information



Jacob Wood

01582 401 221 | 07401 221 022

j.w@srwood.co.uk