

PILCHER ● LONDON

bespoke commercial property consultants

52 fitzroy street london, w1t

for rent / lease

850 - 7,267 sq ft

economical media style office
floors to let within a prominent
corner building



www.pilcher.london | 0207399 8600

● 52 fitzroy street, london, w1t

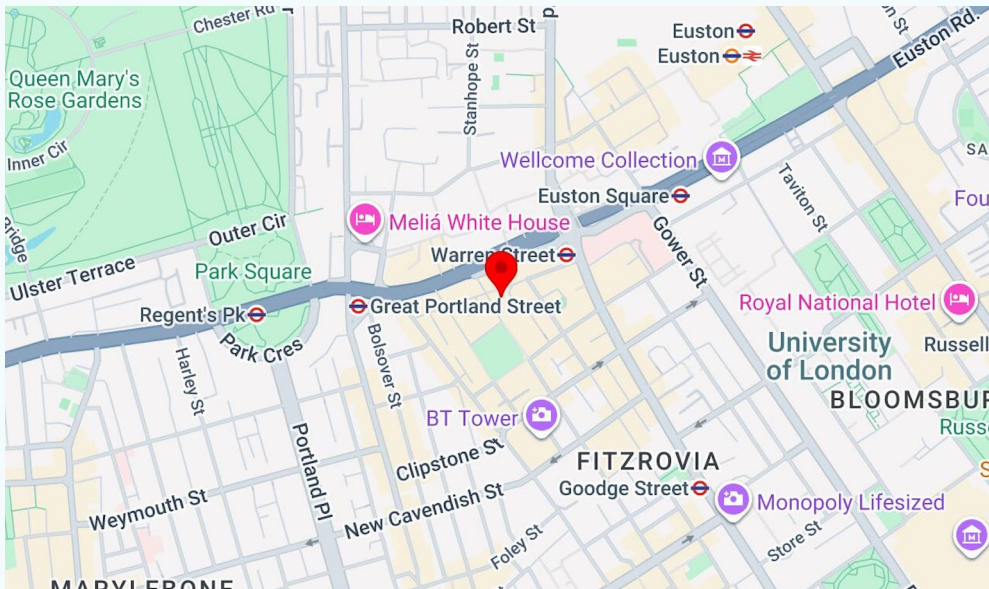


about

52 fitzroy street comprises 7,200 sq ft of office space across 5 floors in a prominent corner building with excellent natural light. with air conditioning and great ceiling heights throughout. this would be a perfect opportunity for a media style business looking to secure an hq building.

location

situated moments from fitzroy square, the building is positioned between great portland street & warren street station, with goodge street a short walk away. surrounded by some of the best restaurants & amenities in the west end, this building sits in one of fitzrovia's most desirable locations.



● 52 fitzroy street, london, w1t



about

52 fitzroy street comprises 7,200 sq ft of office space across 5 floors in a prominent corner building with excellent natural light. with air conditioning and great ceiling heights throughout. this would be a perfect opportunity for a media style business looking to secure an hq building.

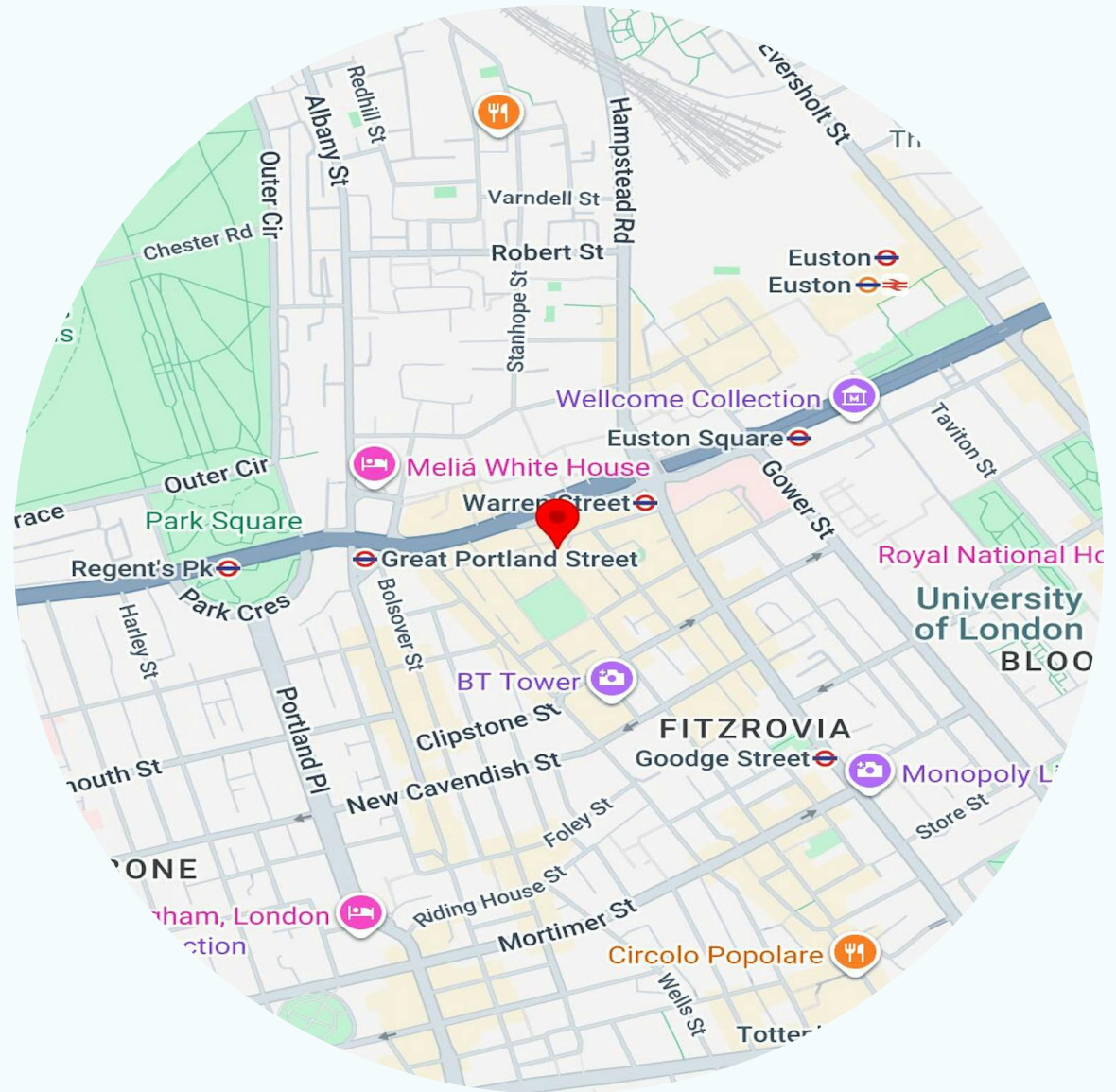
PILCHER ● LONDON

www.pilcher.london | 0207399 8600

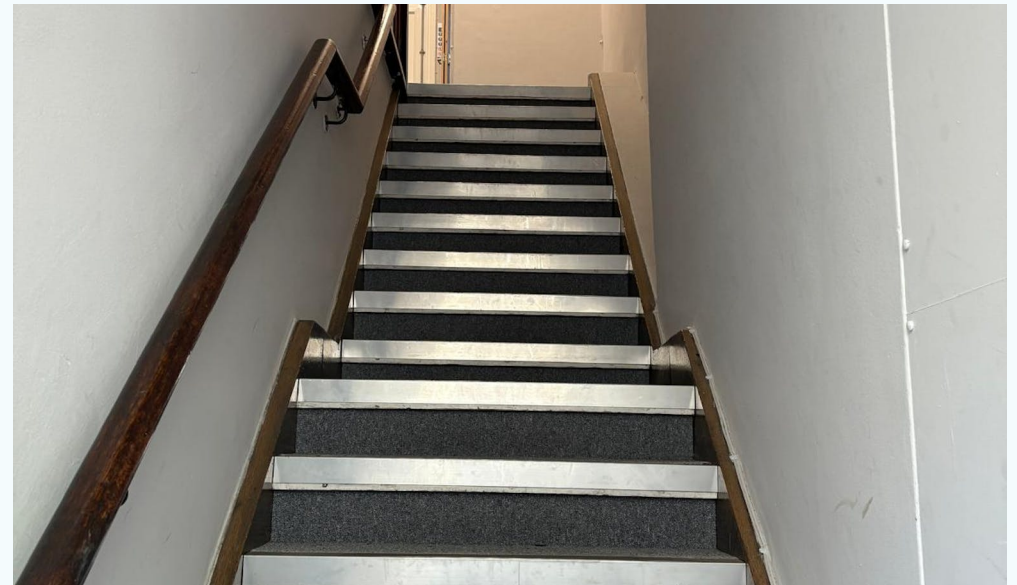
● 52 Fitzroy Street, London, W1T

location

situated moments from Fitzroy Square, the building is positioned between Great Portland Street & Warren Street Station, with Goodge Street a short walk away. Surrounded by some of the best restaurants & amenities in the west end, this building sits in one of Fitzrovia's most desirable locations.



● 52 fitzroy street, london, w1t



PILCHER ● LONDON

www.pilcher.london | 0207399 8600

● 52 fitzroy street, london, w1t

accommodation

the accommodation comprises the following areas:

name	sq ft	sq m	availability
1st	1,405	130.53	available
2nd	1,396	129.69	available
3rd	1,630	151.43	available
ground	1,986	184.51	available
basement	850	78.97	available
total	7,267	675.13	

● 52 fitzroy street, london, w1t

amenities

- corner building
- natural light
- excellent transport links
- air conditioning throughout
- demised wc's
- great floor to ceiling height

financials

service charge	tbc
----------------	-----

lease

new lease

possession

available immediately

● 52 fitzroy street, london, w1t

PILCHER ● LONDON

bespoke commercial property consultants



viewings & more information

taylor rosen

020 7399 8610 | 07834 789 346

taylorrosen@pilcher.london

david jackson

020 7399 8606 | 07801 415 957

davidjackson@pilcher.london