

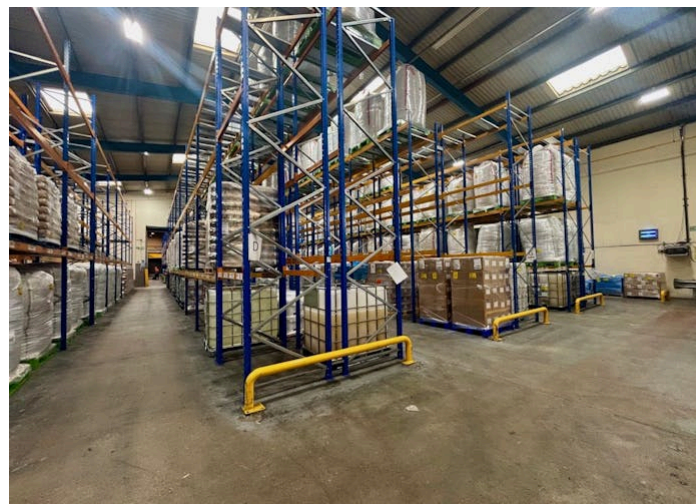


TO LET

Units 22-26, Queensway Meadows Industrial Estate,
Newport, **NP19 4SQ**

COMING SOON - TO BE REFURBISHED - Prime South East Wales industrial / distribution location - 40,585 sq ft unit on a 2.96 acre site

- Located at Queensway Meadows Industrial Estate
- Excellent road access to Junctions 24 and 25 of the M4 Motorway
- Industrial / distribution unit - total Gross Internal Area 40,585 sq ft (3,770.4 sq m)
- Total site area of 2.96 acres (low site density circa 27% site cover)
- 7 No. level loading doors - Cross Flow Access
- Minimum eaves height 6.1 metres
- Large yard area and 48 car parking spaces



Size

40,585 sq ft (3,770.47 sq m)

Location

The property is situated on the established Queensway Meadows Industrial Estate, around 2 miles southeast of Newport city centre. It benefits from excellent road connectivity via the A48 (Southern Distributor Road), linking Junctions 24–28 of the M4, and the A4810, which provides dual carriageway access to Junction 23A (Magor). Access is via the A4810 through Meadows Road, connecting to Estuary and Freshwater Roads.

Nearby amenities include Newport Retail Park and Leisure Park, both within 300m, while the Celtic Manor Resort and ICC Wales are approximately 2 miles away. The £1bn Glan Llyn redevelopment lies around 500m to the northeast, delivering a major mixed-use scheme including 4,000 homes and 100 acres of employment space, now home to occupiers such as Amazon and CAF Rail.

Connectivity

Road

- J.24 M4 3.4 miles
- Queensway 0.3 miles
- Meadow (A4810)



Train Stations

- Newport Station 3.7 miles



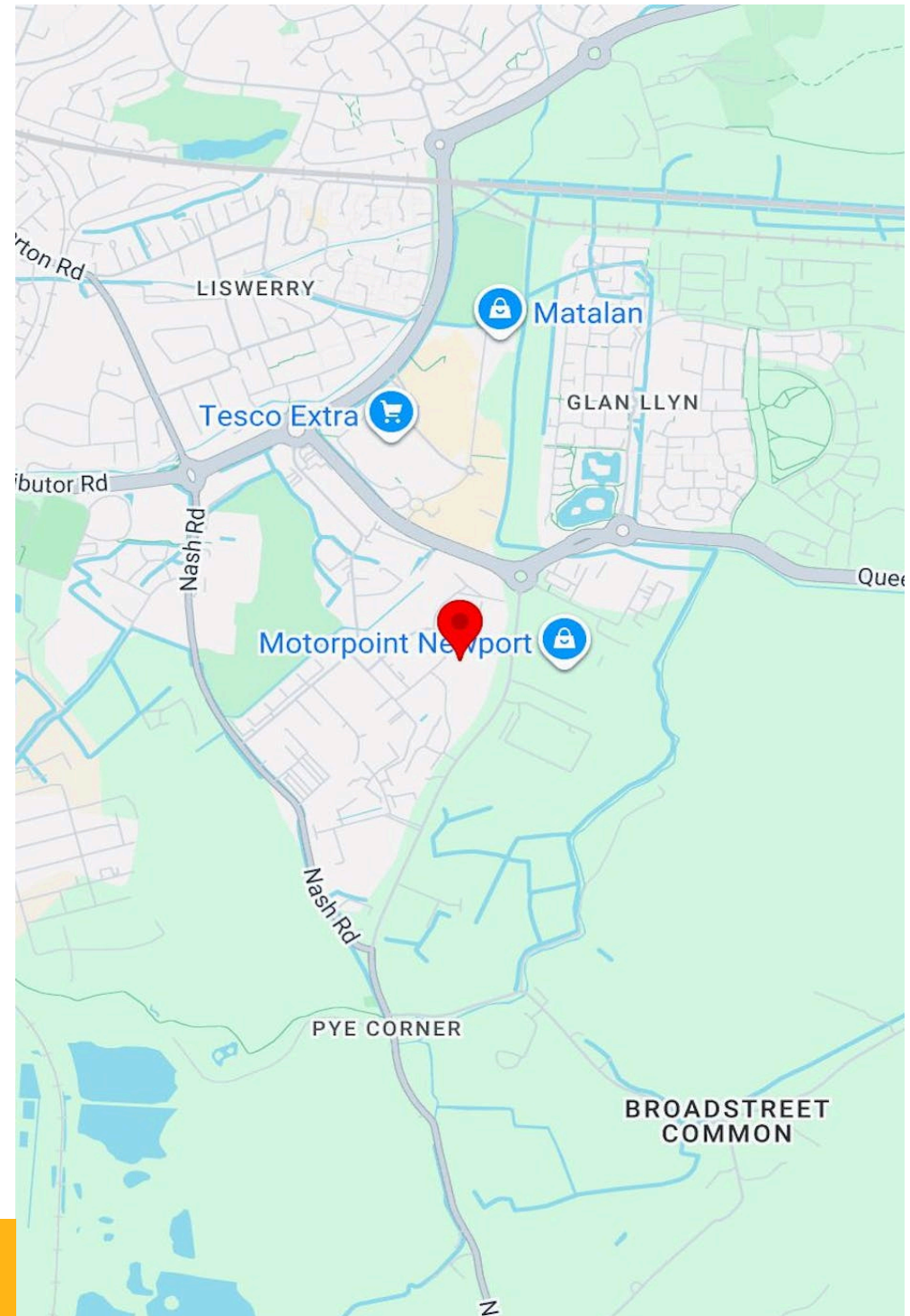
Airports

- Cardiff Airport 29.5 miles
- Bristol Airport 32.2 miles



Water

- Port of Newport 3.1 miles



Description

The property comprises a prominently positioned industrial/distribution unit, currently undergoing comprehensive refurbishment. The unit will offer high-quality open-plan warehouse accommodation with a minimum eaves height of 6.25 metres and a maximum eaves height of 8.25 metres.

Access is provided via 7 level loading doors arranged to allow full cross-flow loading, making it well suited to logistics and distribution occupiers. Externally, the property benefits from a large secure yard and 48 dedicated car parking spaces.

The unit will provide a modern, efficient working environment upon completion, suitable for a range of industrial and distribution uses.

Accommodation

	sq ft (Approx GIA)	sq m (Approx GIA)
Units 22-26	40,585	3,770
TOTAL	40,585	3,770

The accommodation comprises the following areas:

Specification



EPC: C (65)



Loading Doors (Dock level): 7



Eaves Height (m): 6.1



Car Parking

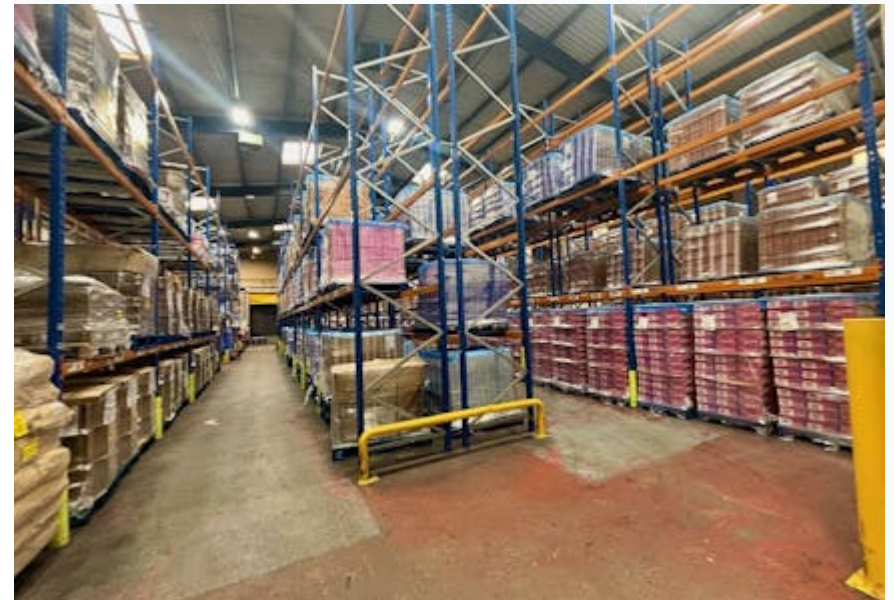


Total parking spaces:
48





Units 22-26, Queensway Meadows Industrial Estate,
Newport, **NP19 4SQ**



Sat Nav. NP19 4SQ



///prove.during.energy



what3words

Lease Terms

New Lease New Lease available for a term of years to be agreed.

Business rates

Rateable Value: £171,000

Rates Payable: £88,065 per sq ft based on April 2026 Valuation

EPC

C (65)

Availability

Available Q1 2027

Contact

Henry Best

07738 960012

henry@jenkinsbest.com

Craig Jones

02920 34 00 33 | 07867 393494

craig@jenkinsbest.com

Tom Rees

02920 340033 | 07557 161491

tom@jenkinsbest.com

Amelia Nicholas

02920 340 033 | 07703 975 677

amelia@jenkinsbest.com

7 Ty-Nant Court, Morganstown,
Cardiff, CF15 8LW, UK

029 2034 0033

jenkinsbest.com

**Jenkins
Best**
jenkinsbest.com



Jenkins Best for themselves and for the vendor/lessor of this property whose agents they are give notice that:

These particulars do not constitute any part of an offer or contract.

All statements contained in these particulars are made without responsibility on the part of Jenkins Best for the vendor/lessor and nothing contained in these particulars is to be relied upon as a statement or representation of fact.

Any intended purchaser/lessor must satisfy itself by inspection or otherwise as to the correctness of each of the statements contained in these particulars.

The vendor/lessor does not make or give and neither Jenkins Best nor any person in their employment has any authority to make or give any representation/warranty whatsoever in relation to this property or any services.

All terms quoted exclusive of VAT unless otherwise stated.

Anti-Money Laundering (AML) Compliance Statement

In accordance with the UK Anti-Money Laundering Regulations 2017 (and subsequent amendments), all prospective purchasers must undergo a thorough identity verification process before entering into any property transaction. This includes providing valid identification, proof of address, and, where necessary, proof of the source of funds.