



Grainger Suite, Dobson House, Regent Centre, Newcastle upon Tyne, NE3 3PF

Superbly presented serviced office accommodation with unrivalled transport links and onsite amenities.

- Fully Serviced offices
- Shower and Kitchen facilities
- Furnished or Part Furnished Options
- Onsite Staff and Visitor Parking
- Public Transport Links
- On Site Cafe

Summary

Available Size	102 to 3,000 sq ft
Rent	£229 - £2,000 per month Serviced
Business Rates	Upon Enquiry
VAT	Applicable
Legal Fees	Upon Enquiry
EPC Rating	Upon enquiry

Description

The Grainger Suite at Dobson House provides superbly finished offices available on a fully serviced basis. The offices benefit from a manned reception area, fully or part furnished, shared kitchen, WC and shower facilities and bookable meeting rooms. There is also the addition of onsite staff and visitor parking.

The property also boasts 24 hour access and top of the range telecommunications infrastructure. Leases are available on a flexible basis starting at 12 months.

Location

Dobson House is situated in Regent Centre, Gosforth, located just over two miles north of Newcastle City Centre. The location is a prominent position on the Great North Road, giving excellent road links in all directions with good access to the A1.

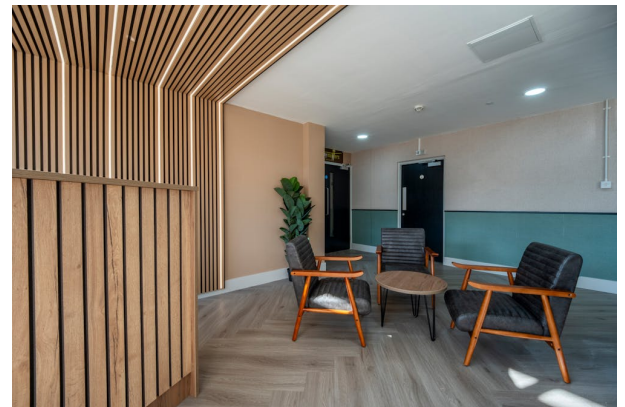
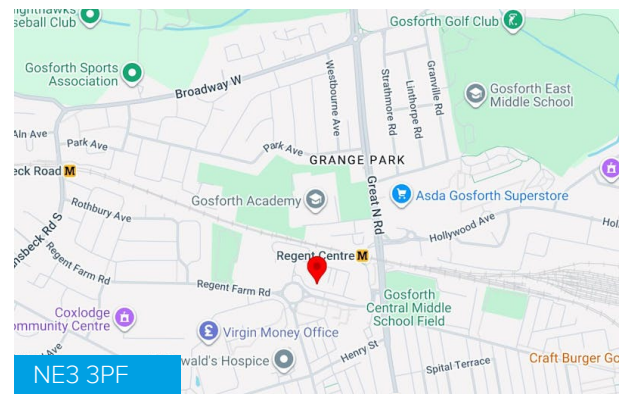
This excellent road link is complemented by Regent Centre's transport hub. The ample car parking, as well as the main metro station and bus station provides access throughout Tyne and Wear. Plus, Newcastle's International Airport and Newcastle's Central railway station are both just minutes away.

Viewings

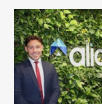
Get in touch to arrange a viewing via Align.

Terms

The offices are available on flexible terms. Please get in touch for further information.



Viewing & Further Information



John Routledge

07443530922

john.routledge@alignpropertypartners.co.uk

View Properties Here
www.alignpropertypartners.co.uk

