



12,000 Sq Ft Warehouse in a Mill. Located a short drive to the M60 and close to the Train Station

Cobden Mill

Gower St, Farnworth, Bolton, BL4 7EY

Industrial / Storage, Warehouse

TO LET

12,000 sq ft

(1,114.84 sq m)

- Bright Airy Warehouse
- Second Floor
- Communal Goods Lift
- Suitable for a Wide Variety of Purposes
- Great Location
- Close to Motorway
- Large Open Plan Layout

Where your business belongs

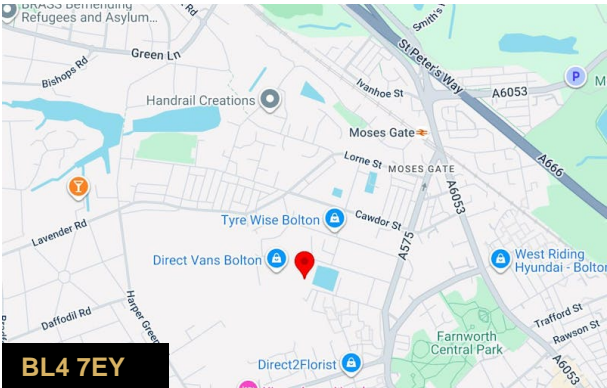
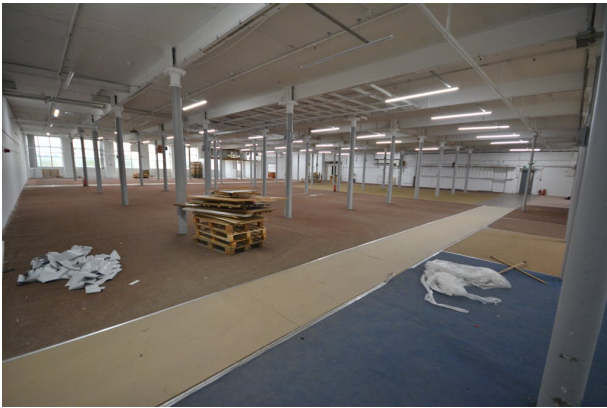
Cobden Mill, Gower St, Farnworth, Bolton, BL4 7EY

Summary

Available Size	12,000 sq ft
Rent	£3,000 per month
Business Rates	Upon Enquiry
EPC Rating	Upon enquiry

Description

Located a few minutes drive from Junction 15 of the M60 on the outskirts of Bolton this 12,000 Sq Ft unit is located on the second floor of the Historic Cobden Mill. Particularly bright and airy it would lend itself to a large number of potential uses such a Gym, Dance Studio, Creative Space, Traditional Warehousing etc etc. Access is via an internal stair well, however there is also a shared goods lift and delivery area. For more information or to arrange a viewing please contact the office.



Viewing & Further Information

son | **Stuart Pearson**
rier° | 0161 764 4440
ERCIAL | commercial@pearsonferrier.co.uk

More properties @ [pearsonferrier.co.uk](https://www.pearsonferrier.co.uk)