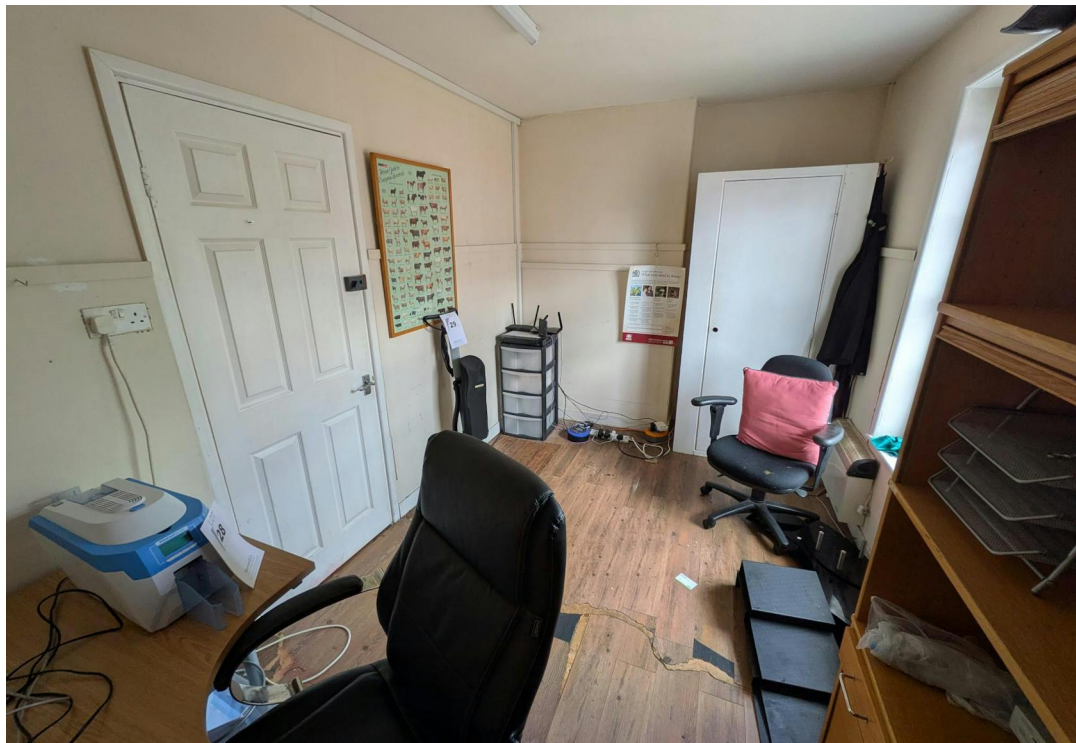




Prime three story retail and office opportunity with parking in the heart of Godalming High Street.

- Prime High Street position.
- Flexible layout offering retail, office and storage spaces.
- Parking space available at the rear.
- Easy access to public transport and the A3.
- Excellent frontage offering high visibility.
- WC facilities available.





Location

The property occupies a prime position on the vibrant Godalming High Street amongst national retailers and high-end independents, benefitting from high footfall and excellent visibility. The property is located approximately 1 mile away from the A3 and within walking distance from Godalming mainline station, providing direct links to Guildford/London to the North and Portsmouth to the South.

Description

This versatile commercial building is arranged over three floors, offering a blend of retail, office and storage spaces. The ground floor features a prominent glazed frontage and retail area while the first and second floors provide various rooms ideal for office use or additional storage. A significant advantage is the private parking space at the rear, a rarity for such a central location.

Accommodation

Name	sq ft	sq m
Ground	676	62.80
1st	229	21.27
2nd	152	14.12
Total	1,057	98.19

Terms

New Lease

Rent

£24,500 per annum

Rates & Charges

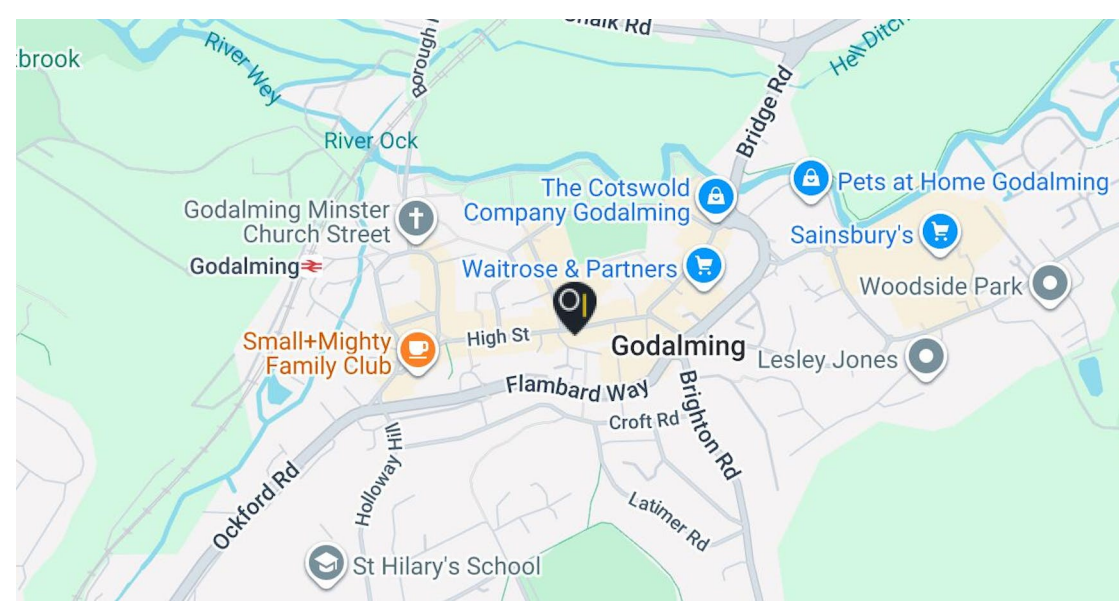
Rateable value: N/A

EPC

D (g6)

Legal costs

Each party to bear their own legal costs incurred in the transaction.



Contact

Kieran Morgan

T: 01483 300176

M: 07904377405

E: Kieran@owenisherwood.com

owenisherwood.com | 01483 300 176

1 Wey Court, Mary Road, Guildford, Surrey GU1 4QU

These particulars do not constitute, or form any part of, any offer or contract, and whilst all the information given is believed to be correct, all interested parties must satisfy themselves of its accuracy. All prices and rents are quoted exclusive of VAT, unless otherwise stated