



## IND / WAREHOUSE TO LET

### Unit 1 Metana House

Priestley Way, Crawley,  
RH10 9NT

# INDUSTRIAL, WAREHOUSE TO LET

2,700 sq ft

- 9 car parking spaces
- High office content
- Kitchen

# Unit 1 Metana House, Priestley Way, Crawley, RH10 9NT

## Summary

<b>Available Size</b>	2,700 sq ft
<b>Rent</b>	£15 per sq ft pax plus VAT.
<b>Rates Payable</b>	£4.56 per sq ft 01.04.2026 - 31.03.2027.
<b>Rateable Value</b>	£28,500
<b>Estate Charge</b>	£1,414.98 per annum plus VAT. Insurance to 21.09.2025
<b>EPC Rating</b>	C (58)

## Description

Unit 1 is a mid-terrace unit of single storey concrete portal frame construction with block infill, concrete floors and insulated roof and externally, facing brickwork. Internally the premises comprise warehouse/production area, an office, reception, rest room, WCs and kitchenette. There are 9 private car parking spaces. Currently the building benefits from extended offices which may suit a high office content user.

## Location

Metana House is situated in Priestley Way, Manor Royal, Crawley's main commercial centre. J10, M23 is about 2 miles providing access to J7, M25 and the national motorway network. Gatwick Airport is approximately 0.5 miles with the mainline service to London (Victoria) journey time about 30 minutes.

## Accommodation

The accommodation comprises the following areas:

Name	sq ft	sq m
Ground	1,315	122.17
Ground - Office	1,385	128.67
<b>Total</b>	<b>2,700</b>	<b>250.84</b>

## Specification

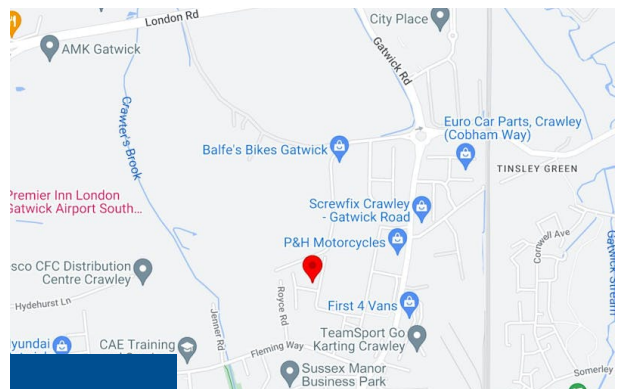
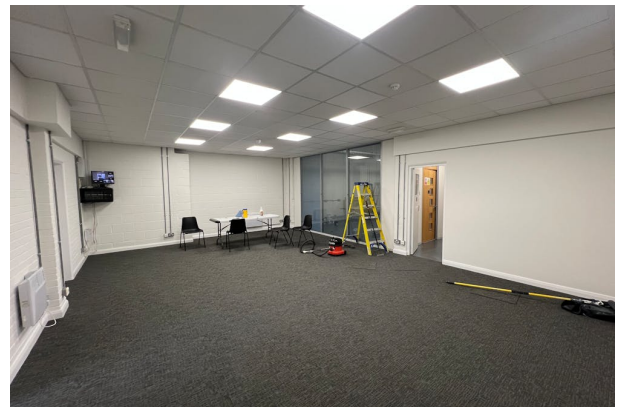
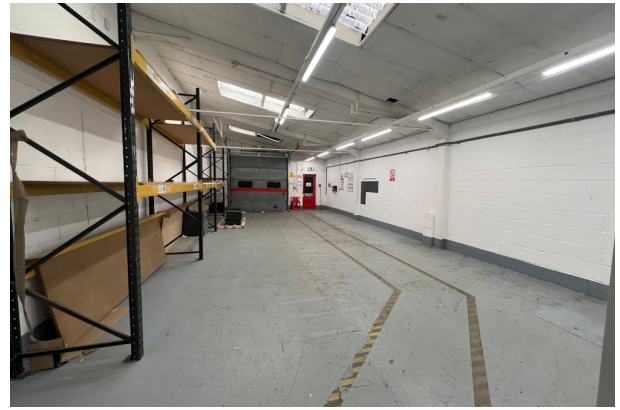
Surface level loading door  
Three phase power  
High office content  
9 car parking spaces

## Terms

A new lease is available for a term to be agreed, available from October 2025.

## Anti Money Laundering

The successful tenant will be required to provide the usual information to satisfy the AML requirements when Heads of Terms are agreed.



## Viewing & Further Information

**Harry Deacon-Jackson**

07907 483182

hdj@ftdjohns.co.uk

