



Land on Coral Street, Saltburn, 24 Marine Parade,
Saltburn, TS12 1EH

Residential Development With Planning for 6 x 3 Bedroom Terraced
Homes For Sale

- Freehold Development Land
- Highly Popular Coastal Town
- Planning Permission for 6 Terraced Homes
- Great Transport Links

Summary

Available Size	0.30 Acres
Price	Offers from £350,000
Business Rates	N/A
Service Charge	N/A
EPC Rating	Upon enquiry

Description

The site sits to the rear of Saltburn House. Largely flat the land comprises the ground to Saltburn House encompassing a mowed lawn, allotments and concrete walkways. The perimeter of the property held by a brick wall approximately 6ft in height. There are 5 trees located on the site as well as other elements of small shrubbery. The site benefits from full planning permission for the construction of a terrace of 6x3 bedroomed terraced houses under planning reference R/2024/0655/CA granted in April 2025.

Location

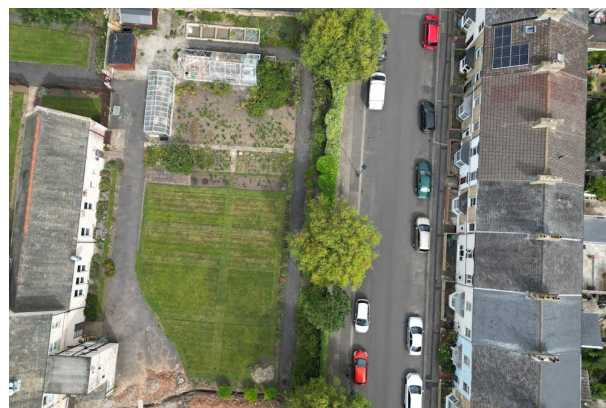
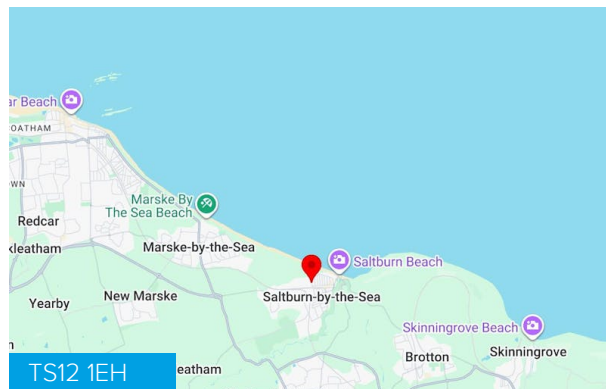
Saltburn-by-the-Sea is a busy market town and popular tourist destination on the Northeast Coast and the edge of the North York Moors, being approximately 12 miles east of Middlesbrough and 19 miles west of Whitby.

The property fronts onto Coral Street close to the town centre and seafront. The majority of the surrounding properties are residential family homes and holiday lets.

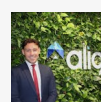
Accommodation

The accommodation comprises the following areas:

Name	sq ft	sq m	Availability
Outdoor - Land	13,068	1,214.06	Available
Total	13,068	1,214.06	



Viewing & Further Information



John Routledge

07443530922

john.routledge@alignpropertypartners.co.uk

View Properties Here
www.alignpropertypartners.co.uk

