



SAVOY STEWART
COMMERCIAL PROPERTY

**OFFICES, E (COMMERCIAL,
BUSINESS AND SERVICE)**

TO LET

17 WOODSTOCK STREET

London, W1C 2AJ

Medical Use Available



KEY POINTS

- > Kitchen facilities
- > Excellent natural light
- > Close proximity to Underground Stations
- > 5 person passenger lift
- > Comfort Cooled

TENURE	TO LET
SIZE	320 TO 680 SQ FT
EPC	D (95)

Contact us on 020 7495 3666 or visit www.savoystewart.co.uk

LOCATION

Woodstock Street is a cobbled street that is located off of Oxford Street and New Bond Street. The property is in a quiet location by the junction of Woodstock Street and Blenheim Street.

Transportation connections are excellent with Bond Street and Oxford Circus underground stations (Central, Jubilee, Bakerloo and Victoria lines) being within close proximity and numerous bus routes accessible from Oxford Street.

ADDITIONAL INFORMATION

The available accommodation is arranged over 4 floors and have undergone refurbishment works within the last 2 years. Each floor has comfort cooling and wooden flooring. The 2nd floor has a large meeting room.

The property falls under the new Class E and from the 1st September it can be used for either offices or Medical use.

ACCOMMODATION

Name	Sq ft	Rent
4th	320	£22,500.00 per annum
3rd	360	£27,000.00 per annum
Total	680	

VIEWINGS

Strictly by appointments via sole agents Savoy Stewart.

TERMS

A new lease for a term by arrangement directly from the Landlord.

LEGAL COSTS

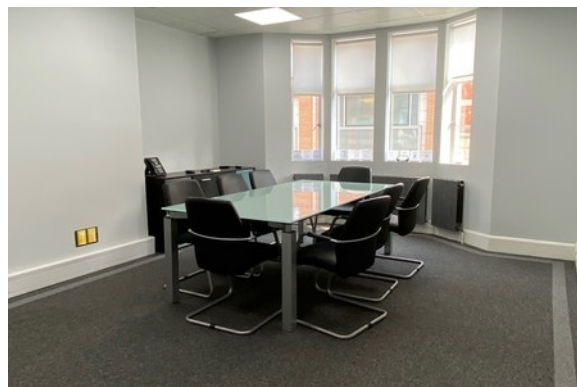
Each party to be responsible for their own legal costs incurred in this transaction.

BUSINESS RATES

Rates Payable: £15,360.00 per annum
(based upon Rateable Value: £30,000.00 and UBR: England Standard 51.2p)

SERVICE CHARGE

n/a



VIEWING & FURTHER INFORMATION



Darren Best
020 7478 9115
db@savoystewart.co.uk



Vivek Krishnan
020 7478 9114
vk@savoystewart.co.uk

or visit savoystewart.co.uk

