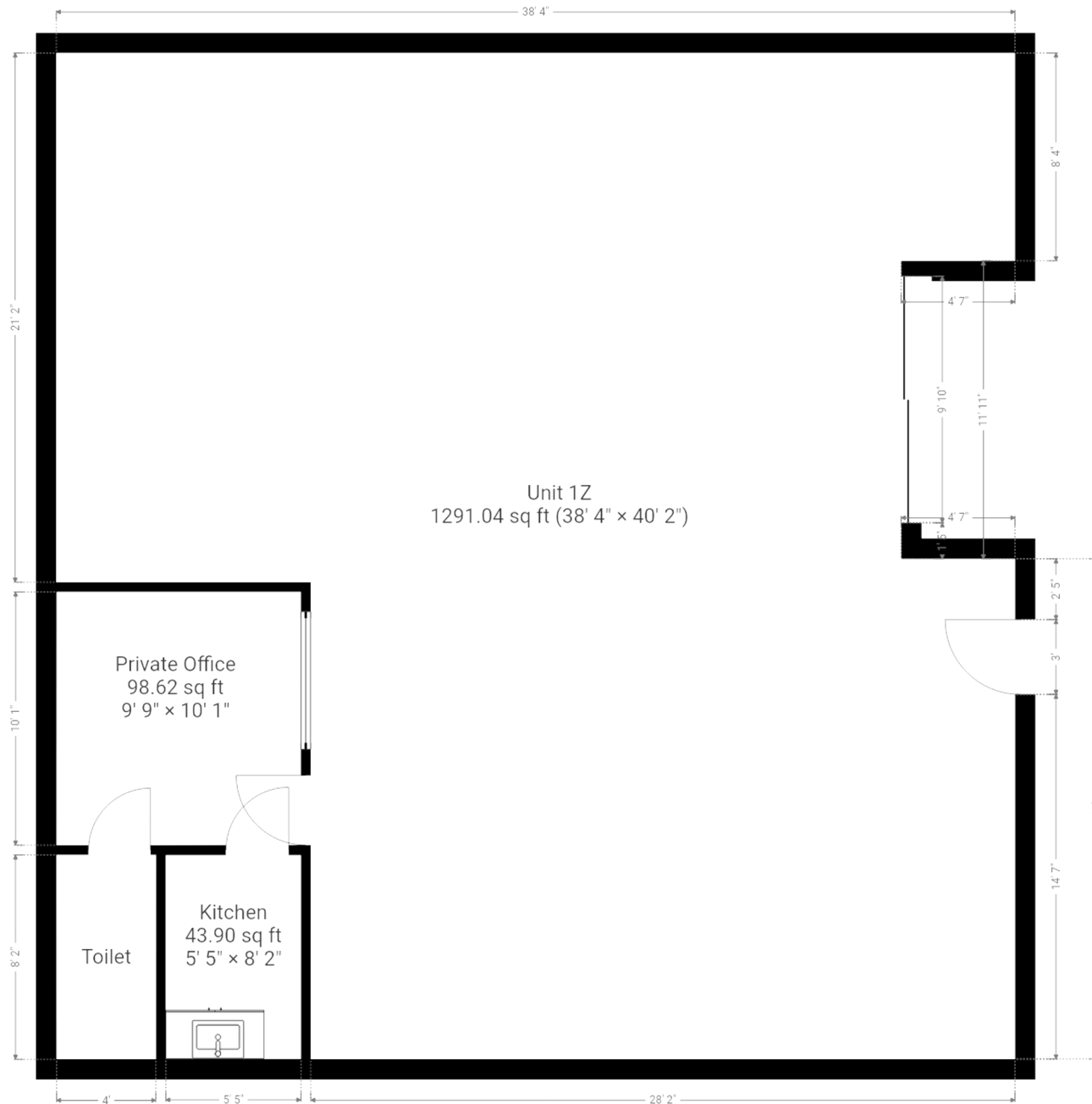




TO LET - LIGHT INDUSTRIAL
UNIT 1Z, LEATON INDUSTRIAL ESTATE, SHREWSBURY, SY4 3AP

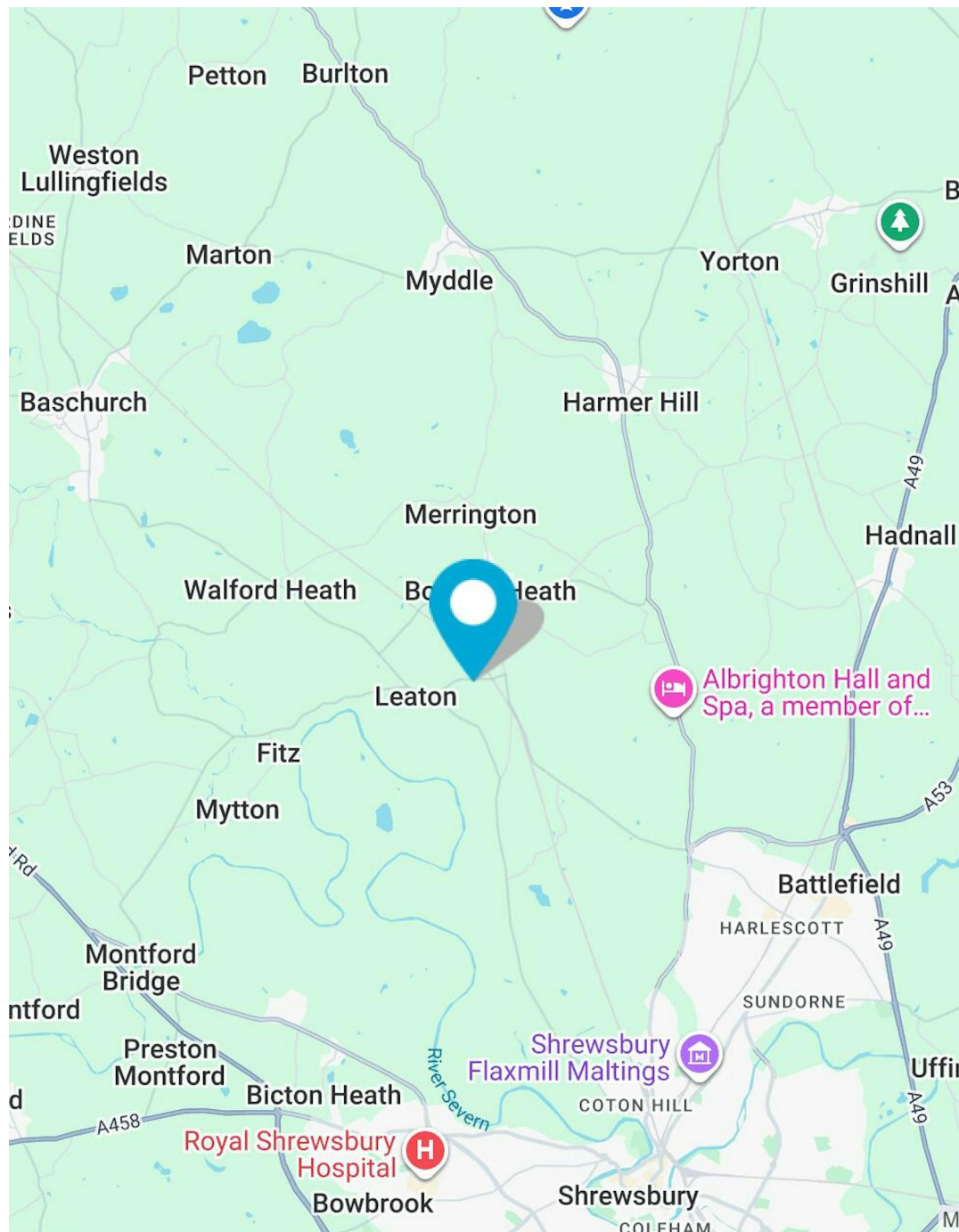


RENT

■ £9,000 per annum

KEY POINTS

- 1500 sq ft industrial unit ideal for storage or light manufacturing
- Features electric roller shutter door and open-plan layout
- Located on established Leaton Industrial Estate
- Excellent road links via A5124, A49, and M54



LOCATION

Unit 12 is located on Leaton Industrial Estate, a well-established and popular commercial site situated just north of Shrewsbury, Shropshire. The estate offers excellent connectivity via the A5124 and A49, providing easy access to the national road network, including the M54 and M6 motorways. Its strategic location makes it an ideal base for businesses requiring regional distribution or local service operations. The estate benefits from a secure environment and a mix of local and national occupiers, reinforcing its reputation as a strong industrial and commercial hub.

ACCOMMODATION

UNIT 12, LEATON INDUSTRIAL ESTATE, SHREWSBURY, SY4 3AP
1,500 SQ FT | £9,000 PER ANNUM

01743 450 700

DESCRIPTION

Unit 1Z is a well-sized industrial unit offering approximately 1500 square feet of versatile workspace, ideal for light manufacturing, storage, or general industrial use. The unit is of steel frame construction and benefits from an electric roller shutter door providing convenient vehicular access, together with a separate personnel entrance. Internally, the unit features a clean, open-plan layout, enhanced by premium LED bay lighting, ample natural light, and sufficient ceiling height to suit a wide range of business operations. The unit is also fitted with an office, kitchen, and toilet facilities, providing a practical and self-contained working environment. The unit is offered at a competitive annual rent of £9,000, with an additional maintenance rent of £480, covering the upkeep of common areas and estate services.

MAINTENANCE FEE

£480 per annum

RENT

£9,000 per annum

VAT

On Application

RATES

On Application

LEGAL COSTS

On Application

EPC

On Application

CONTACT

Viewings strictly by prior arrangement with the agent. For more information or to arrange a viewing, please contact:

[LISSY LLEWELLYN-BELL](#)

01743 450 700

commercialmarketing@halls.gb.com



IMPORTANT NOTICE Halls have advised their clients on the Code of Practice for Commercial Leases in England and Wales. Halls, for themselves and for the vendor of this property, or as the case may be, lessor whose agent they are, given notice that: i) These particulars are intended for guidance only. They are prepared and issued in good faith and are intended to give a fair description but do not constitute part of an offer or contract. Any information given should not be relied on as a statement or representation of fact or that the property or its services are in good condition. ii) Halls have not made any investigations into the existence or otherwise of any issues concerning pollution and potential land, air and water contamination. The purchaser is responsible for making his or her own enquiries in this regard. iii) Neither Halls nor any of their employees has any authority to make or give any representation or warranty whatsoever in relation to the property. iv) The images show only certain parts and aspects of the property at the time they were taken/created. Any areas, measurements or distances given are approximate only. Any plans are for identification purposes only. v) Any reference to alterations to, or use of, any part of the property is not a statement that any necessary planning, building regulations or other consent has been obtained. An intending purchaser must verify these matters. An occupier should not rely upon the Use stated in these particulars and should check their proposed use with the relevant Planning Authority. Generated on 19/01/2026



UNIT 1Z, LEATON INDUSTRIAL ESTATE, SHREWSBURY, SY4 3AP

1,500 SQ FT | £9,000 PER ANNUM

01743 450 700

