



35 Park Lane, London, W1K 1RB  
**To Let**  
4,196 sq ft  
35 Park Lane | 4,196 sq ft | Fitted Workspace



## 35 Park Lane, London, W1K 1RB

### Summary

- Rent: Rent on application
- Business rates: £55 per sq ft EST
- Service charge: £22.50 per sq ft EST
- Lease: New Lease

### Further information

- [View details on our website](#)

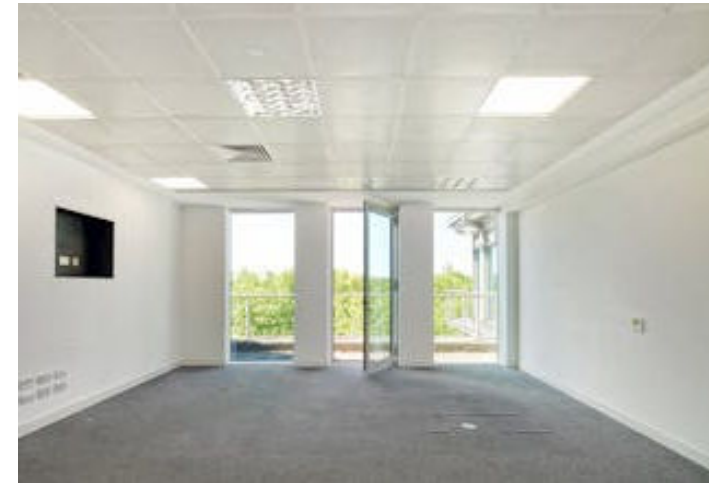
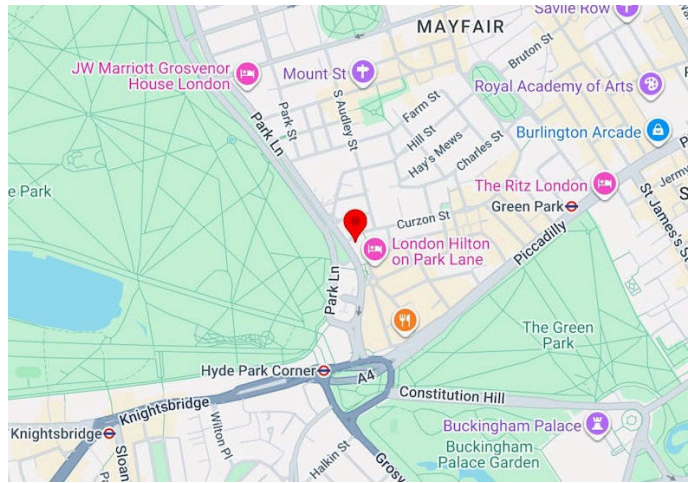
### Contact & Viewings



**Kate Weber**  
+447707169938  
Kate.Weber@jll.com



**Paul Grindal**  
0203 805 6938 | 07920 231659  
paul.grindal@jll.com



### Description

The 5th floor of 35 Park Lane offers a fitted corner suite within a prestigious building overlooking Hyde Park. The suite benefits from excellent natural light throughout and is fitted with a selection of private offices and meeting rooms.

### Location

The property is located on Park Lane in Mayfair, an area synonymous with world renowned hotels, restaurants and retailers. Hyde Park Corner (served by Piccadilly Line) and Green Park underground stations (served by Victoria, Jubilee and Piccadilly Lines) are within a 4 minute and 8 minute walk respectively. In addition, there are numerous bus routes on Park Lane that serve the area.

### Accommodation

Name	sq ft	sq m	Availability
5th	4,196	389.82	Available
<b>Total</b>	<b>4,196</b>	<b>389.82</b>	

### Specifications

- Uninterrupted views over Hyde Park
- Suspended ceiling with integral lighting
- Full access raised floor, 100mm clear void
- Four pipe fan coil air conditioning
- Manned reception and associated security
- 2 passenger lifts
- 24 hour access

