



Alexander House

15 Princes Road, Richmond, TW10 6DQ

A very attractive self-contained two storey building in a quiet setting close to the town centre with two parking spaces.

1,215 sq ft
(112.88 sq m)

- Air-conditioning
- Self Contained Building
- 2 parking spaces
- WCs and shower facilities
- Currently used as a fitness and pilates studio
- Suitable for office use as well as many other commercial uses

Alexander House, 15 Princes Road, Richmond, TW10 6DQ

Summary

Available Size	1,215 sq ft
Rent	£49,500 per annum
Rates Payable	£16,956 per annum Applicant to satisfy themselves of rates payable.
Rateable Value	£39,250
Service Charge	£300 per annum To be confirmed
VAT	Applicable
Legal Fees	Each party to bear their own costs
EPC Rating	D (94)

Description

The premises comprise two floors of self-contained, open plan accommodation with parking and an extra double-door entrance. Currently let to a Pilates studio, the property boasts stylish internal decor with white walls and timber beams. Other features include serviced air conditioning, Cat II lighting, a kitchenette and WC and shower facilities.

Location

Richmond is a highly affluent town located some 9 miles from Central London and has excellent road and rail links to both London and Heathrow Airport via the M3 and M4 highways. The premises are situated a short walk from Richmond Town Centre and Station. Local amenities include Whole Foods, Gail's Bakery, Waitrose and The White Horse and Red Cow Pubs.

Accommodation

The accommodation comprises the following areas:

Name	sq ft	sq m	Availability
Ground	548	50.91	Coming Soon
1st	667	61.97	Coming Soon
Total	1,215	112.88	

Viewings

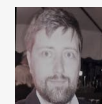
By arrangement with Martin Campbell.

Terms

Premises available by way of a new lease to be contracted out of the LTA 1954.



Viewing & Further Information



Richard Farndale

020 8940 2266 | 077 8936 5304
r.farndale@martincampbell.co.uk



David Keates

020 8940 2266 | 07879 965 525
D.Keates@martincampbell.co.uk