



Ayers & Cruiks
COMMERCIAL

To Let
734 sq ft

**67 Southchurch Road,
Southend-on-Sea, SS1 2NL**

Retail unit with glazed frontage
and WC facilities situated on a
busy retail parade.

- WC facilities
- High pedestrian footfall
- New lease available
- £15,000 per annum exclusive

www.ayerscruiks.co.uk



67 Southchurch Road, Southend-on-Sea, SS1 2NL

Summary

- Rent: £15,000 per annum
- Business rates: £5,613.75 per annum - Interested parties are advised to confirm the rating liability with the relevant local authority
- VAT: To be confirmed
- Legal fees: Ingoing tenant is liable for both parties legal costs
- EPC: C (64)
- Lease: New Lease

Further information

- [View details on our website](#)

Contact & Viewings

Neil Burroughs
01702 608035
neil@ayerscruiks.co.uk

Cameron Cruiks
01702 608045
cameron@ayerscruiks.co.uk

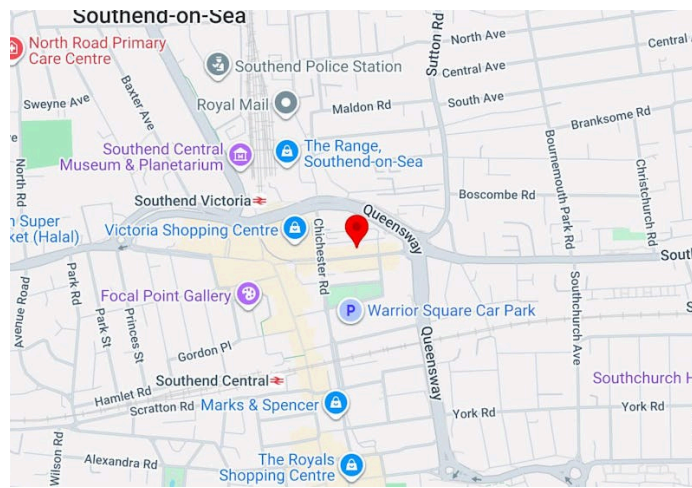
Darrell Clarke
01702 608039
darrell@ayerscruiks.co.uk

Bradley Hair
01702 608057
bradley@ayerscruiks.co.uk

Offices

86-88 Baxter Avenue,
Southend-On-Sea,
Essex,
SS2 6HZ
Tel: 01702 343060

Burgundy Court
64/66 Springfield Road,
Chelmsford,
Essex,
CM2 6JY
Tel: 01245 202555



Description

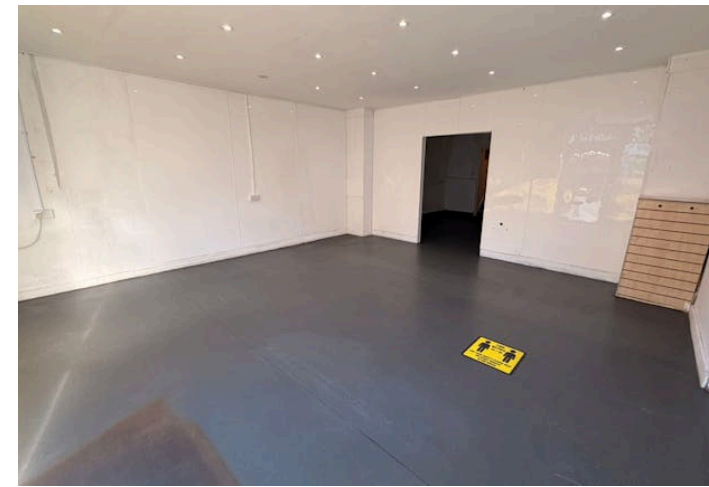
A well configured ground floor retail unit with a glazed frontage. Internally, the accommodation provides a main sales area with additional support space to the rear and a WC facility, suitable for a variety of uses.

Location

This property occupies a prominent position on a busy retail parade in Southchurch, just off of Southend-On-Sea town centre. The area benefits from strong footfall, a mix of local and national occupiers and good transport links, including nearby Southend East train station, providing direct services to London Fenchurch Street and regular bus routes.

Accommodation

Floor/Unit	Building Type	sq ft	sq m	Availability
Ground	Retail	734	68.19	Available



Terms

The premises is available to let on a new full repairing and insuring lease for a term to be agreed.

Rent

£15,000 per annum

Viewings

Strictly by prior appointment via the landlords appointed agents Ayers & Cruiks.

