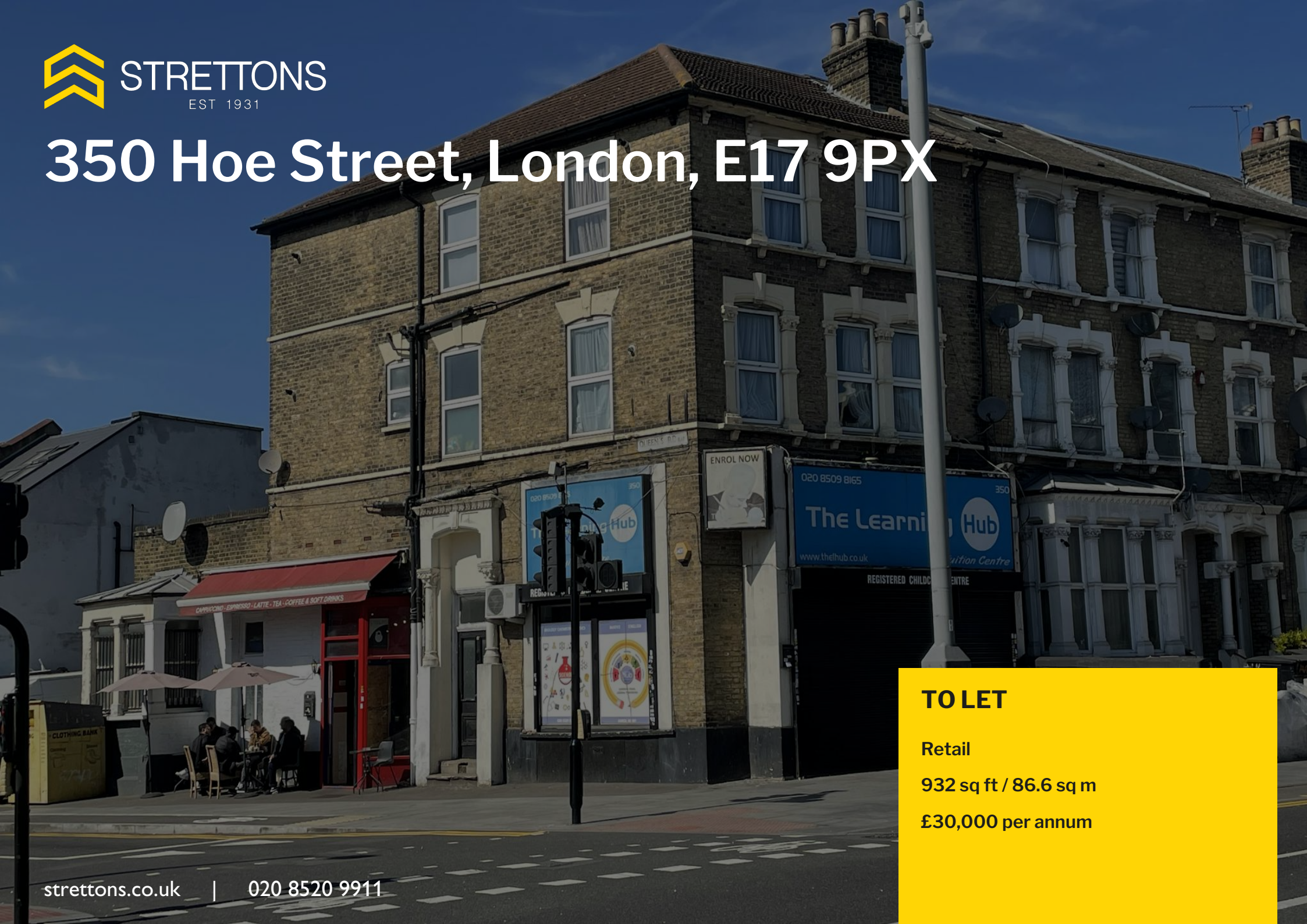


350 Hoe Street, London, E17 9PX



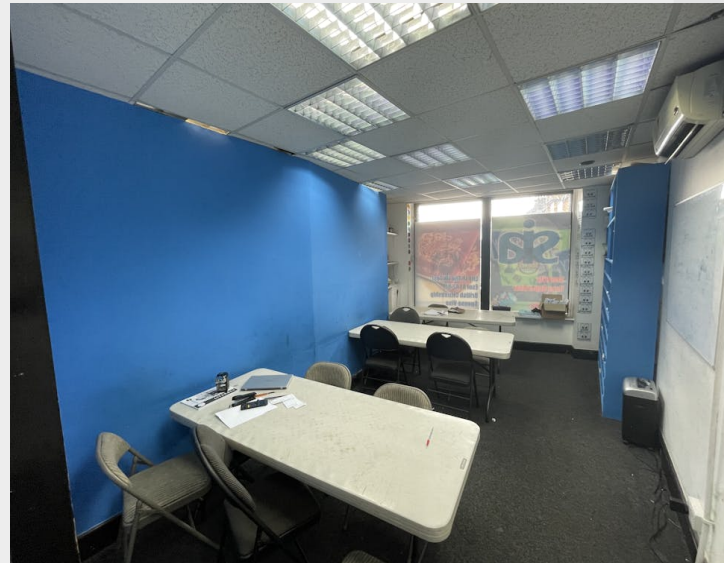
TO LET

Retail

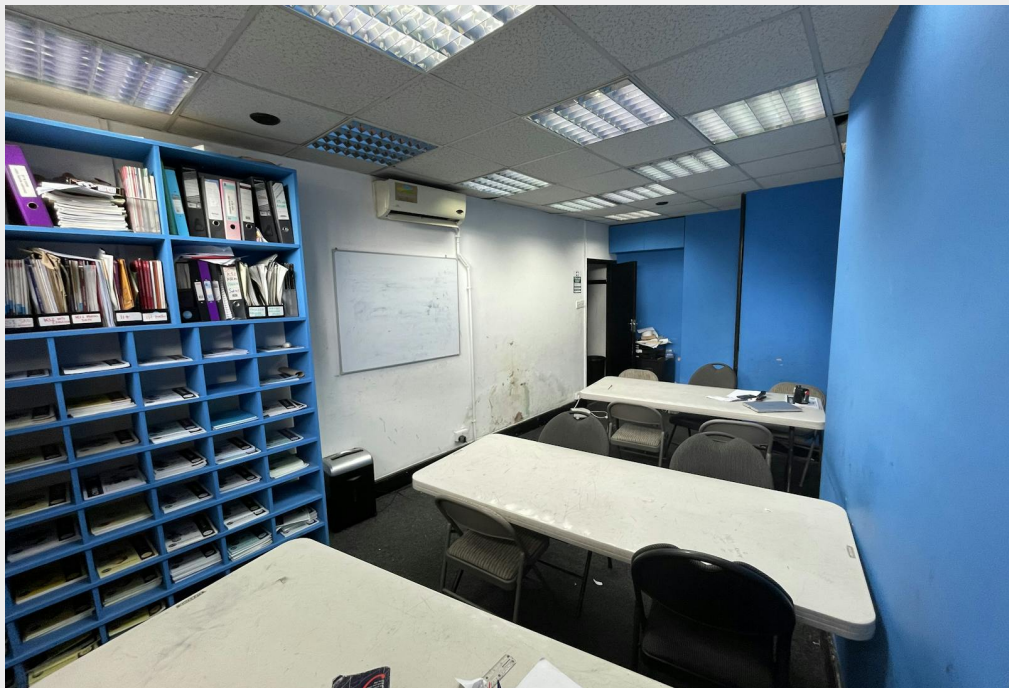
932 sq ft / 86.6 sq m

£30,000 per annum

Class E unit with first floor and basement storage.



- Prominent corner location
- Electric roller shutters
- Close proximity to Walthamstow Tube station
- Fitted kitchen

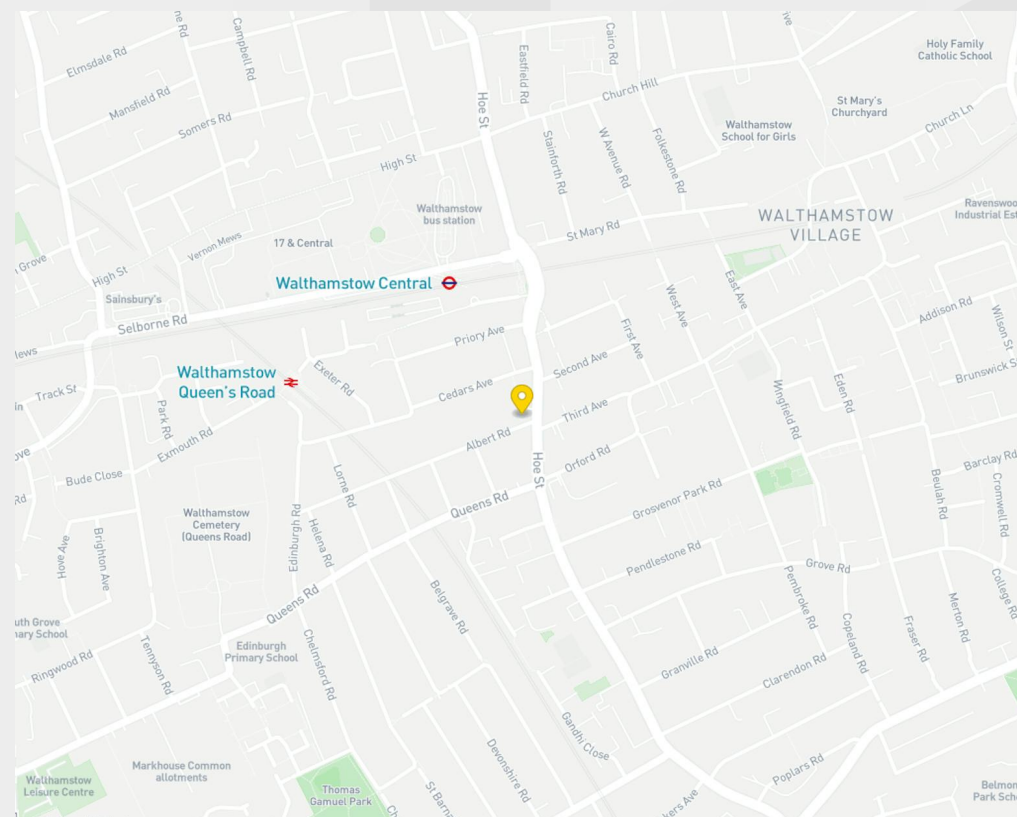


Description

A corner commercial unit with first floor and basement storage. The property was previously used as offices with a separate café entrance on to Queens Road. The first floor is internally accessed and is open plan.

Location

Situated on the South Side of Hoe Street in a prominent corner position. The property is a 5 minute walk to Walthamstow Central Tube station Walthamstow High Street which has a number of local and national occupiers. Walthamstow Village is also close at hand



Accommodation / Availability

Unit	Sq ft	Sq m	Rates payable	Availability
Ground	575	53.42	£6,006 /annum	Available
Basement	51	4.74	On Application	Available
1st	306	28.43	On Application	Available
Total	932	86.59		

Tenure

New Lease

EPC

C (74)

VAT

Upon enquiry

Configuration

Upon enquiry

Contacts

Jamie Smith
07870 850 097
jamie.smith@strettons.co.uk



Further Information

[View on Website](#)

Strettons and their clients give notice that: 1. They are not authorised to make or give any representations or warranties in relation to the property either here or elsewhere, either on their own behalf or on behalf of their client or otherwise. They assume no responsibility for any statement that may be made in these particulars. These particulars do not form part of any offer or contract and must not be relied upon as statements or, representations of fact. 2. Any areas, measurements or distances are approximate. The text, photographs and plans are for guidance only and are not necessarily comprehensive. It should not be assumed that the property has all necessary planning, building regulation or other consents and the Agents have not tested any services, equipment or facilities. Purchasers must satisfy themselves by inspection or otherwise. Generated on 15/01/2026