

MORRISH ROAD SW2

ANERS  
HT 081-674 7192

TIONS  
ERS • DUVETS  
SERVICE

30

NEW PARK SERVICE  
& SHIPPING

TEL/FAX: 020 8674 2539 / 0956 605 332

CHINESE  
RESTAURANT  
& TAKE-AWAY

佳运楼 L  
CHINESE

WESTERN  
UNION  
MONEY TRANSFER

64

WORLDWIDE SHIPPING & TRAVEL

LET & MANAGED

OPEN

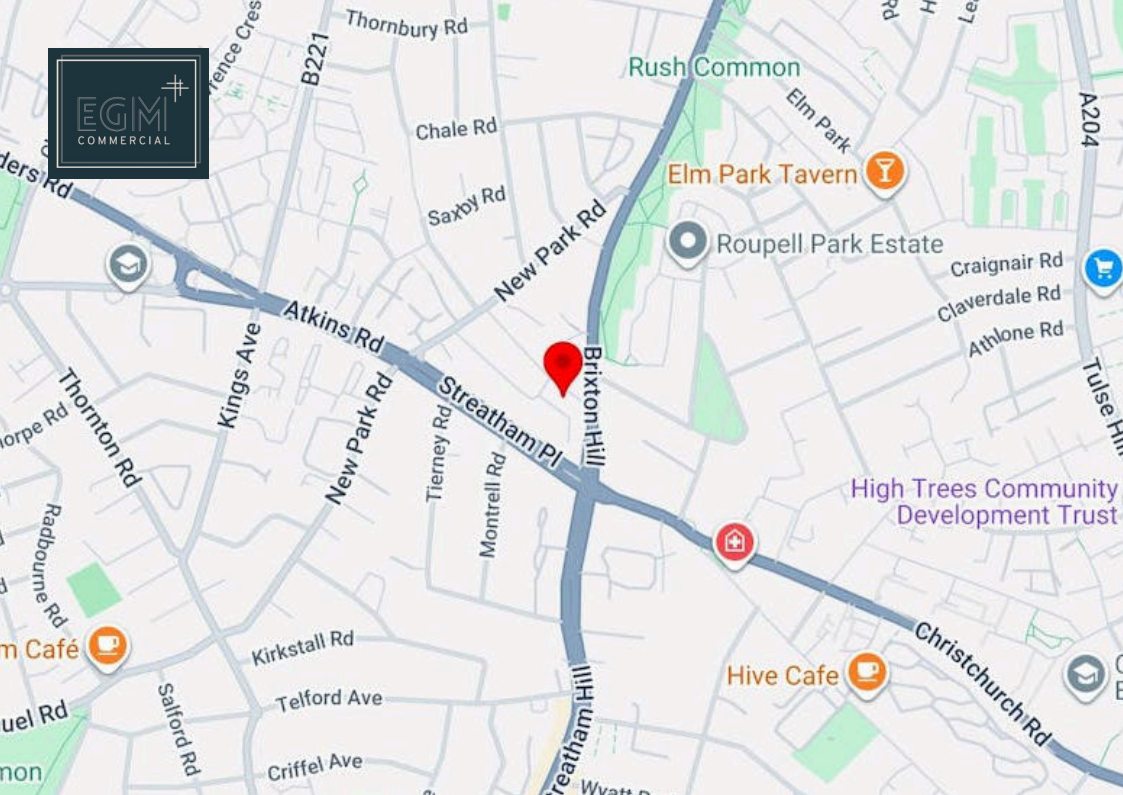
RECORDS CHECK OUT THIS CORNER

Send and receive money here

SYMPYRA STUDIO



64 Morrish Road, London, SW2 4EG  
Retail To Let | £25,000 per annum | 1,075 sq ft  
Retail Opportunity TO LET



## Location

Positioned in the heart of Brixton Hill, this property enjoys a lively and well-established South London location.

Brixton Underground and Streatham Hill stations are both easily accessible, providing quick links into Central London with a range of local amenities, cafes and shops are all within walking distance.

## Accommodation

Name	sq ft	Total /sq ft	Availability
Basement - Basement	246	-	Available
Ground - Ground Floor	829	-	Available
<b>Total</b>	<b>1,075</b>		

## Viewings

By appointment with EGM Commercial  
Monday - Friday 9:00 am - 18:00 pm

## Key Points

- Excellent transport links nearby
- Good natural light throughout
- Located in a popular and growing South London area

## Description

EGM Commercial is pleased to bring to the market this well-connected retail unit in this popular area of South London, this property offers a versatile opportunity.

The property offers excellent frontage with a wide shop front, providing strong visibility and branding potential. Internally, the unit is arranged to provide a functional retail space, suitable for a variety of occupiers.

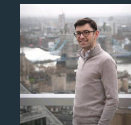
## Summary

- Rent: £25,000 per annum

## Further information

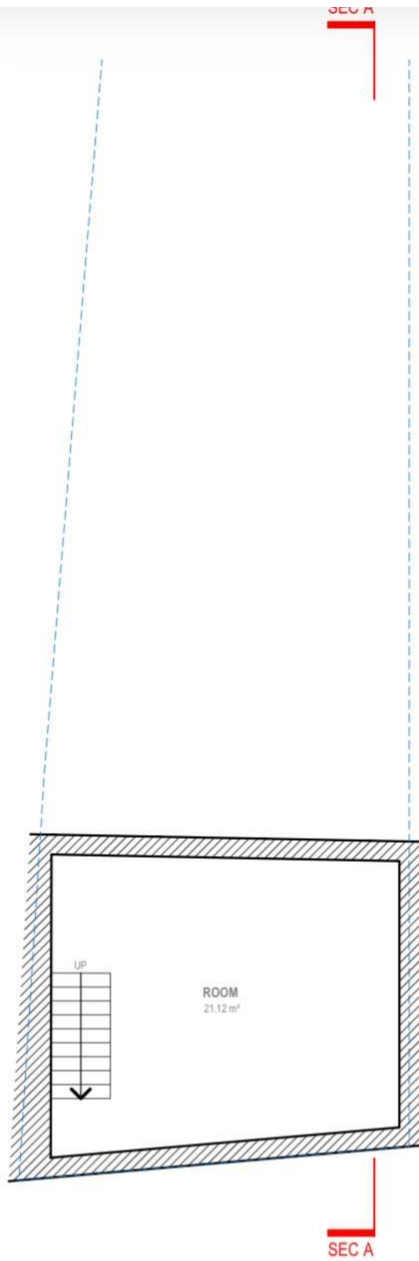
- [View details on our website](#)
- [View Microsite](#)

## Contact & Viewings



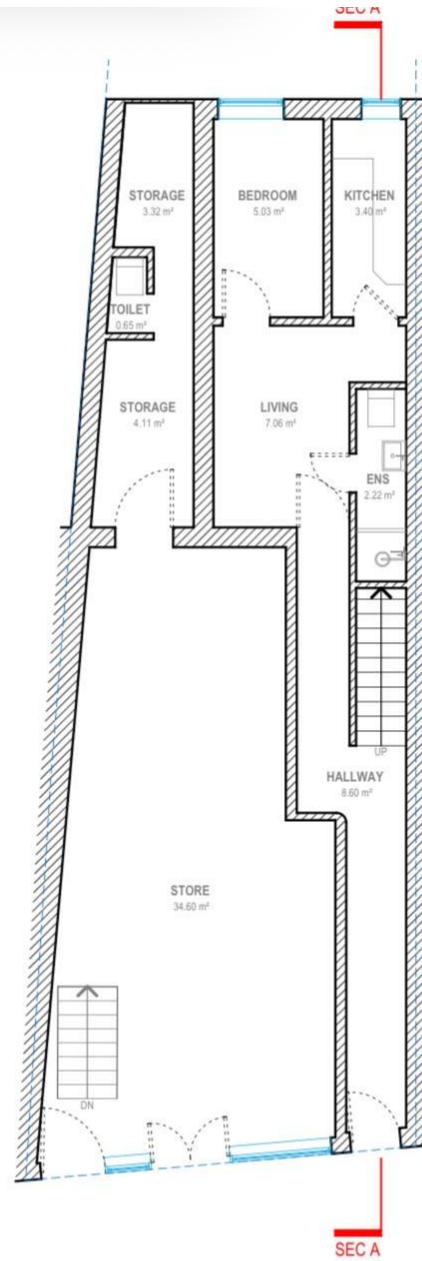
Effi Grussgott  
07572 125 096  
effi@egmcommercial.co.uk

The above information contained within this email is sent subject to contract without prejudice. These particulars are for general information only and do not constitute any part of an offer or contract. All statements contained therein are made without responsibility on the part of the vendors or lessors and are not to be relied upon as statement or representation of fact. Intending purchasers or lessees must satisfy themselves, by inspection, or otherwise, as to the correctness of each of the statements of dimensions contained in these particulars.



## BASEMENT FLOOR

G.I.A. = 22.83 SQM.



## GROUND FLOOR

G.I.A. = 77.00 SQM.