



20 Upper Ham Road
Richmond, TW10 5LA

Excellent location on this busy road linking Richmond and Kingston. Suitable for offices retail or beauty.

320 sq ft
(29.73 sq m)

- E Class Use
- Unrestricted Parking Nearby
- Low Rateable Value
- Affordable Rent
- Prominent roadside location
- Single-storey

20 Upper Ham Road, Richmond, TW10 5LA

Summary

Available Size	320 sq ft
Rent	£20,000 per annum
Rates Payable	£3,283.20 per annum Tenant may benefit from small business exemption.
Rateable Value	£7,600
Legal Fees	Each party to bear their own costs
EPC Rating	E (119)

Description

Situated overlooking Ham Common this single storey unit provides an excellent opportunity for premises in this busy location. Currently in open plan format but could be divided if required. There are WC and kitchen facilities.

Location

Located on the main road linking Richmond with Kingston, Ham provides an excellent local shopping/business community. There is a busy shopping parade with occupiers including Sainsburys, Costa and Greggs together with local retailers. There is a regular bus service running between Kingston, Richmond and Ealing.

Accommodation

The accommodation comprises the following areas:

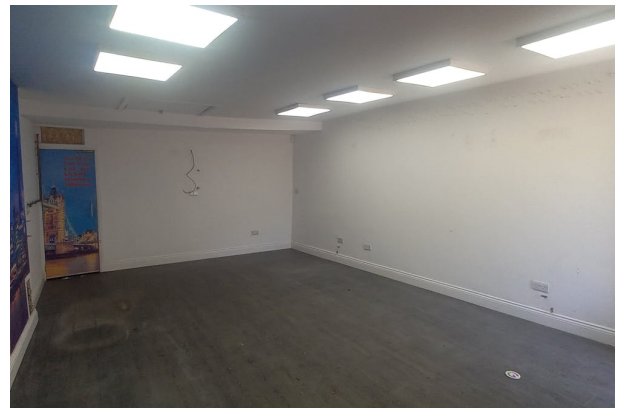
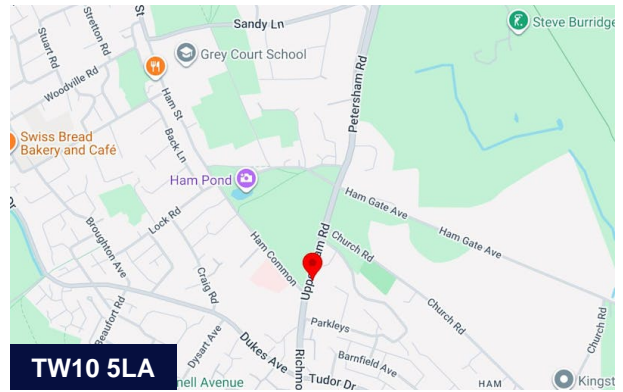
Name	sq ft	sq m	Availability
Ground	320	29.73	Available
Total	320	29.73	

Viewings

Viewings strictly by arrangement.

Terms

Available by way of a new lease. Subject to contract



Viewing & Further Information



David Keates

020 8940 2266 | 07879 965 525

D.Keates@martincampbell.co.uk