



Clockwise

Greenside House, 50 Station Road, London, N22 7DE

Fully Serviced Offices In Wood Green

141 to 5,500 sq ft
(13.10 to 510.97 sq m)

- Fully serviced
- All inclusive price
- Agreements from 1-24 months
- Roof terrace
- Bookable meeting rooms
- Kitchens and showers

Clockwise, Greenside House, 50 Station Road, London, N22 7DE

Summary

Available Size	141 to 5,500 sq ft
Rent	£975 - £25,000 per month
Business Rates	N/A
Service Charge	N/A
VAT	Applicable
EPC Rating	EPC exempt - Serviced Office – subject to legal review

Description

Fully serviced offices with one monthly fee to cover all costs.

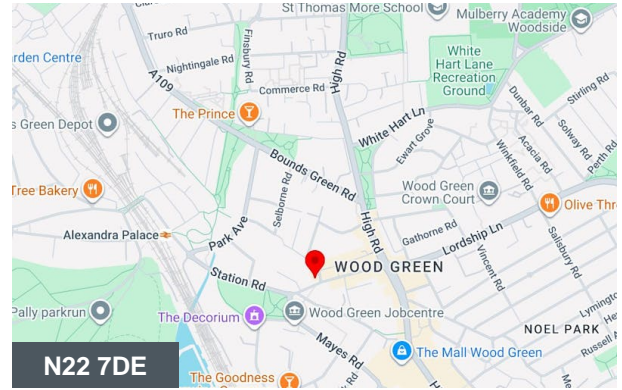
Agreements available from 1 to 24-months.

The building comprises 6 floors with a ground floor co-working area plus café, a roof terrace on the 5th floor and 5-bookable meeting rooms. Kitchen spaces and phone booths on every floor. There is also on-site parking and covered bike storage with showers too.

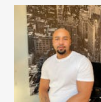
Accommodation

The accommodation comprises the following areas:

Name	sq ft	sq m	Availability
Ground - 0002	305	28.34	Available
Ground - 0003	313	29.08	Available
Ground - 0006	240	22.30	Available
Ground - 0007	278	25.83	Available
1st - 0102	311	28.89	Available
1st - 0105	298	27.69	Available
1st - 0107	292	27.13	Available
1st - 0124	144	13.38	Available
2nd - 0209	244	22.67	Available
2nd - 0212	241	22.39	Available
2nd - 0215	146	13.56	Available
3rd - 0303	343	31.87	Available
3rd - 0312	241	22.39	Available
3rd - 0314	147	13.66	Available
4th - 0409	244	22.67	Available
4th - 0410	229	21.27	Available
4th - 0412	241	22.39	Available
4th - 0414	147	13.66	Available
5th - 0501	231	21.46	Available
5th - 0502	141	13.10	Available
5th - 0503	302	28.06	Available
5th - 0506	324	30.10	Available
5th - Whole Floor	5,500	510.97	Available
5th - Half Floor	3,500	325.16	Available
Total	14,402	1,338.02	



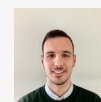
Viewing & Further Information



Kuba Medford

020 7613 4044 | 07912883110

kuba@fyfemcdade.com



George Sarantis

020 7613 4044 | 07311077 549

george@fyfemcdade.com

Location

Easy access to the Piccadilly Line via Wood Green Underground Station

