



High quality CAT A office overlooking the Strand, available now

## 7 Savoy Court

WC2R 0EX

Office

# TO LET

8,223 sq ft

(763.94 sq m)

- Views overlooking the Strand
- Excellent transport links
- Newly refurbished CAT A floor
- Secure cycle storage
- Fibre connect: Open Reach/  
Colt Broadband
- Commissionaire

# 7 Savoy Court, London, WC2R 0EX

## Summary

<b>Available Size</b>	8,223 sq ft
<b>Rent</b>	£82.50 per sq ft
<b>Rates Payable</b>	£26.50 per sq ft
<b>Service Charge</b>	£20.11 per sq ft
<b>EPC Rating</b>	D (99)

## Description

The office suite has been comprehensively refurbished to a CAT A finish to suit a wide array of occupiers. The building itself benefits from high quality end of journey facilities, providing secure cycle storage, showers and a refurbished reception with a commissionaire with 24 hour access and security.

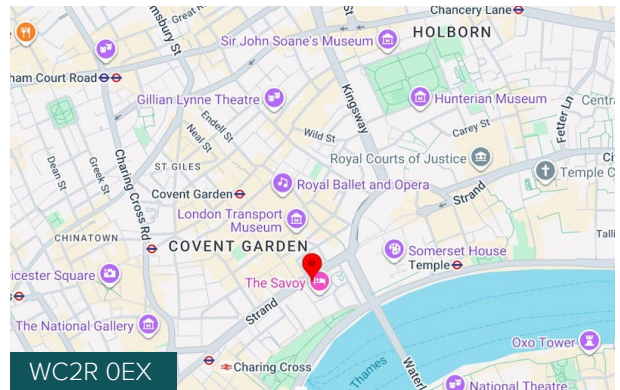
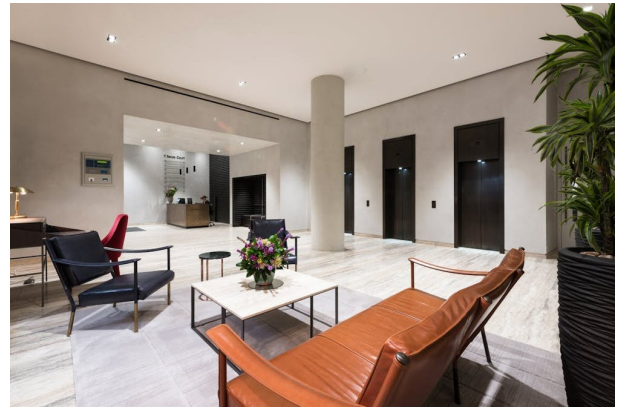
## Location

Overlooking the Strand, 7 Savoy Court benefits from the excellent amenities Covent Garden and the Strand have to offer, as well as the wide array of transport options provided by its location. Benefitting from Charing Cross (National Rail, Northern and Bakerloo) and Embankment (District and Circle, Northern and Bakerloo) being only a 5 minute walk, as well as Waterloo, Covent Garden and Temple all also being within easy access.

## Accommodation

The accommodation comprises the following areas:

Name	sq ft	sq m	Availability
4th	8,223	763.94	Available
<b>Total</b>	<b>8,223</b>	<b>763.94</b>	



## Viewing & Further Information



**Alex Kemp**

07881 610 962

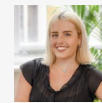
akemp@hanovergreen.co.uk



**George Brewster**

07745 606874

gbrewster@hanovergreen.co.uk



**Zoe Ramsay**

+44 7799821910

zramsay@hanovergreen.co.uk



More information at [hanovergreen.co.uk](https://www.hanovergreen.co.uk)