



OFFICE SPACE TO LET

Suite 8 Gatwick House

Peeks Brook Lane, Horley,
RH6 9ST

OFFICE TO LET

1,331 sq ft

- Character building
- Kitchenette
- Cat II lighting
- Offices over two floors
- Air conditioning
- 3 car parking spaces

Suite 8 Gatwick House, Peeks Brook Lane, Horley, RH6 9ST

Summary

| | |
|-----------------------|---|
| Available Size | 1,331 sq ft |
| Rent | £15 per sq ft pax plus VAT |
| Rates Payable | £4.22 per sq ft The office is likely to benefit from Small Business Rate Relief. |
| Rateable Value | £13,000 |
| Service Charge | £6.42 per sq ft plus VAT (2025 figure) |
| Estate Charge | £458.70 per annum Insurance charge, 22.9.24-22.9.25 |
| EPC Rating | B (40) |

Description

Suite 8 Gatwick House is at first floor, comprising of multiple intimate offices with an open plan space. The unit is spread across multiple floors, benefitting from a kitchenette, cat II lighting, a suspended ceiling, air conditioning and 3 car parking spaces.

Location

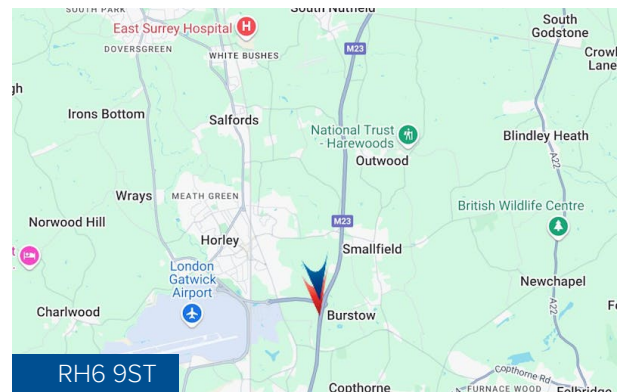
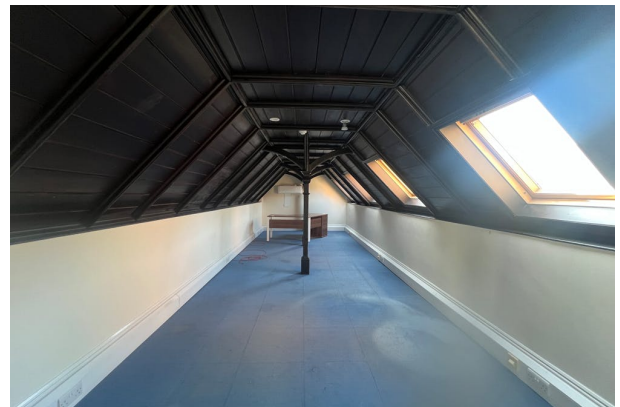
Gatwick House is a high quality office campus development, incorporating both character and modern offices. Suite 8 lies within the character part of the office campus. Onsite there is a cafe, and EV charging. Gatwick House is situated on Peeks Brook Lane, in close proximity to both Crawley and Horley without the busy environment.

Specification

Character building
Kitchenette
Cat II lighting
Offices over two floors
Air conditioning
3 car parking spaces

Anti Money Laundering

The successful tenant will be required to provide the usual information to satisfy the AML requirements when Heads of Terms are agreed.



Viewing & Further Information

Harry Deacon-Jackson

07907 483182

hdj@ftdjohns.co.uk

